

Loch Haven Chain of Lakes Flood Control and Nutrient Management

Anne Elise Wester, PE, Ph.D.

Supervising Professional Engineer

Bureau of District Projects and Construction

St. Johns River Water Management District



St. Johns River
Water Management District

Roadmap

Overview

- Background
- Study phases
- Multi-jurisdictional coordination

Project status

Successes and takeaways

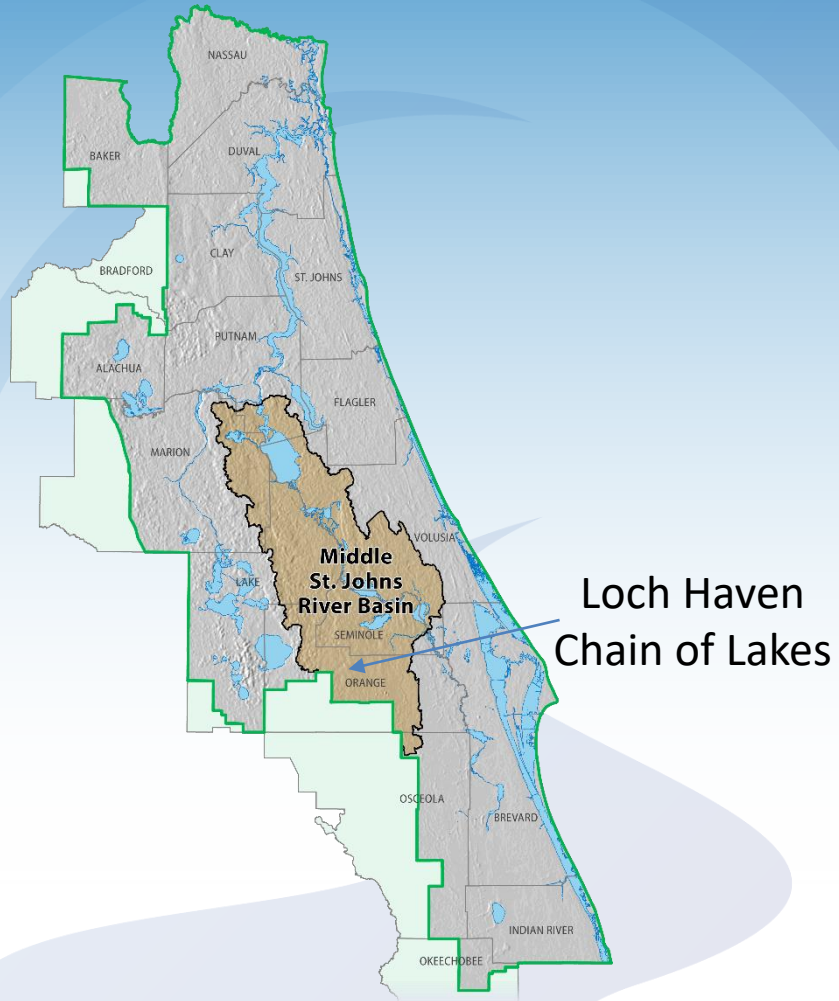
Next steps



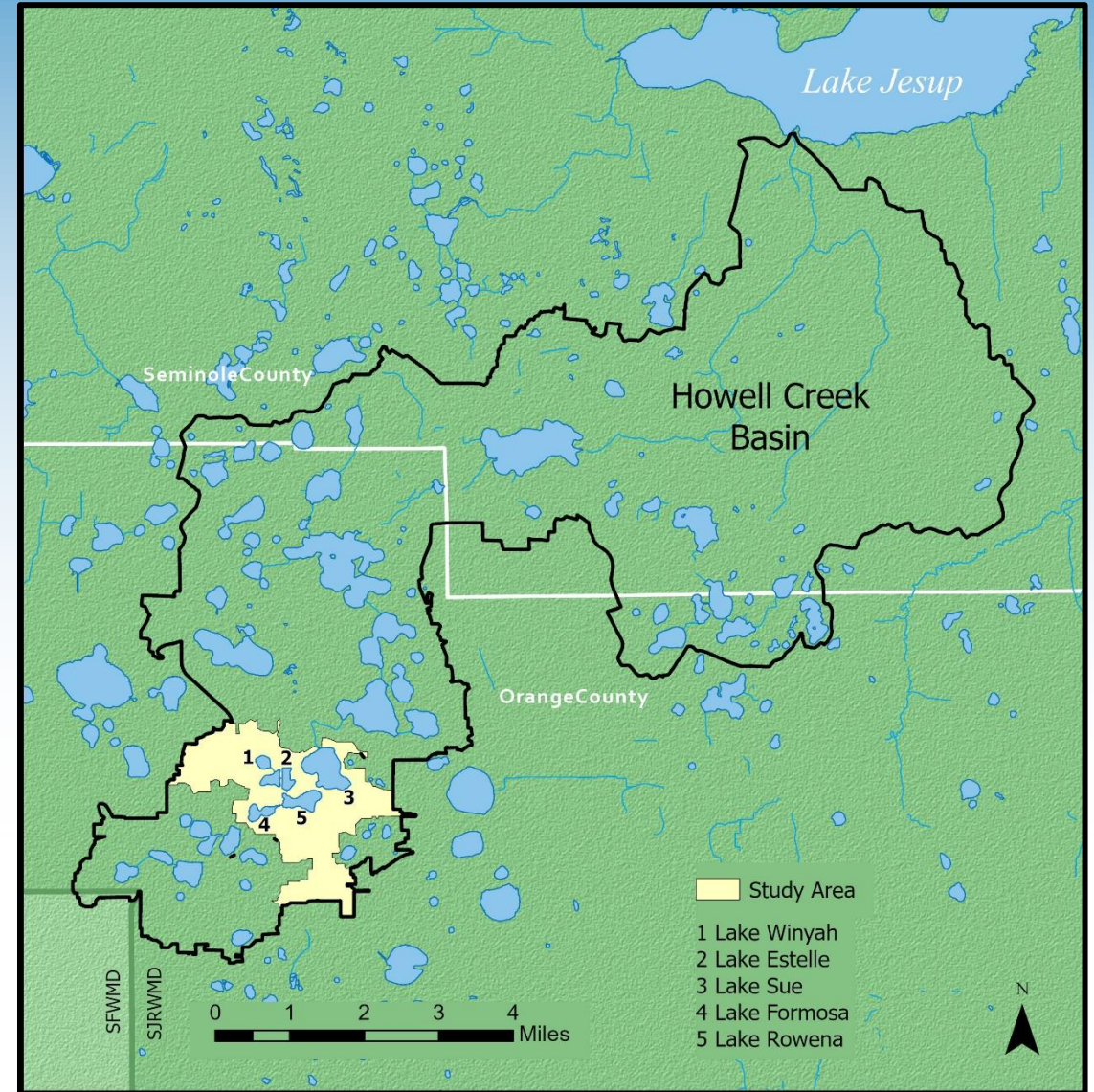
St. Johns River
Water Management District

Location

Middle St. Johns River Basin

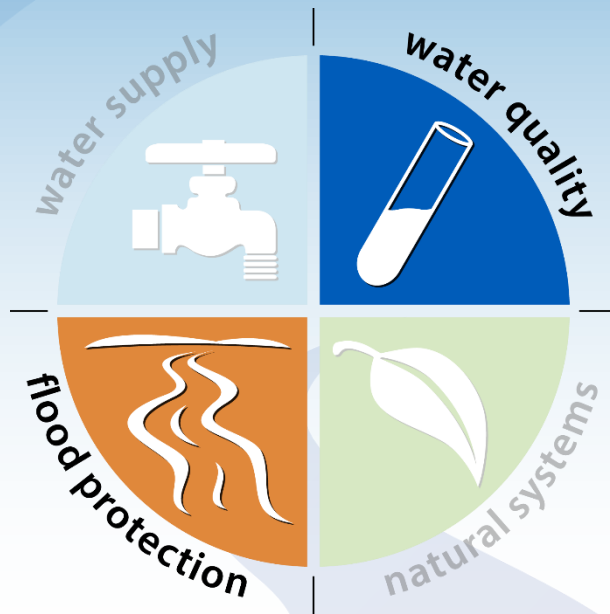


St. Johns River
Water Management District

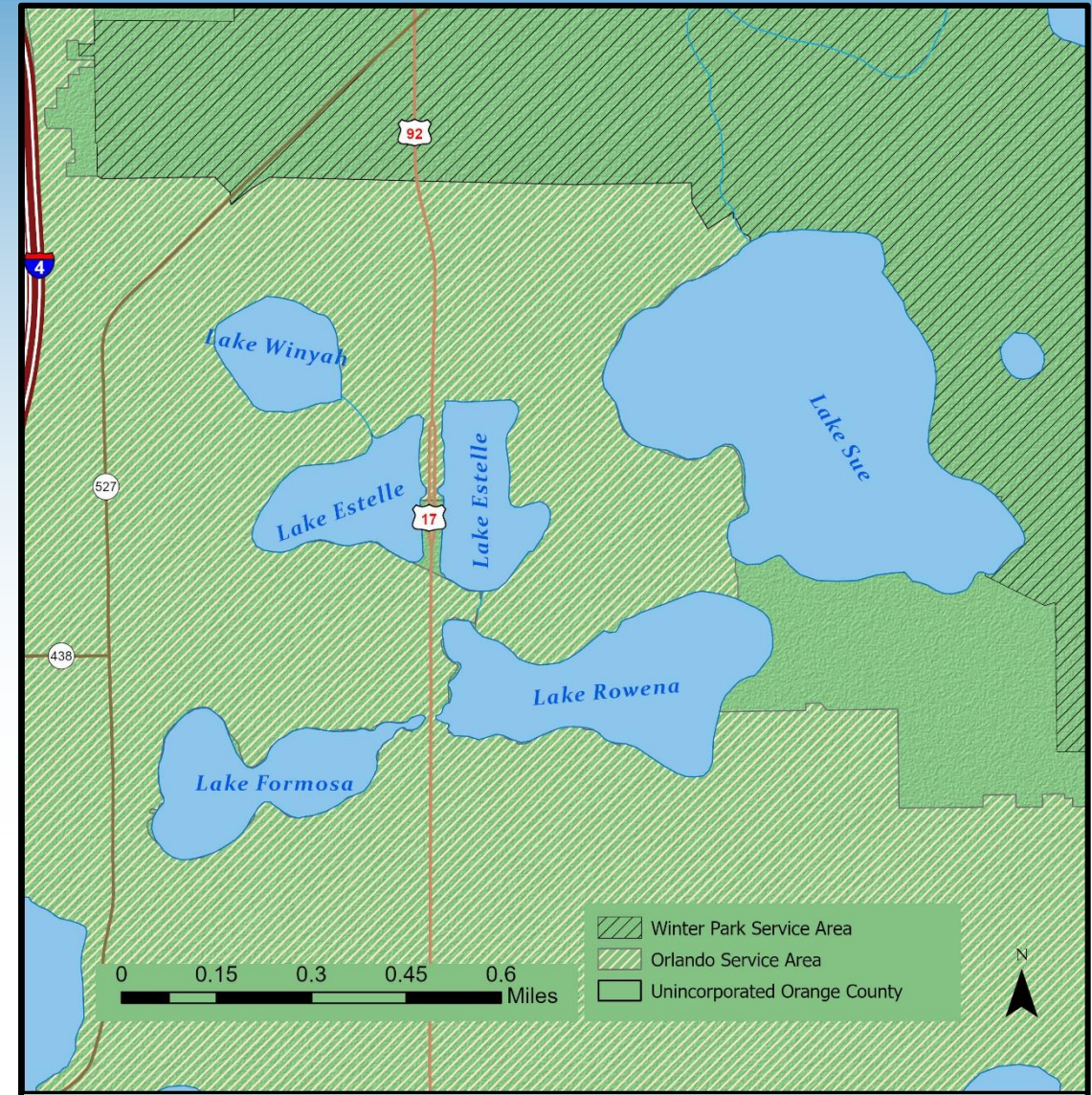


Legislative Appropriation

\$1.35M for Flood Control and Nutrient Management

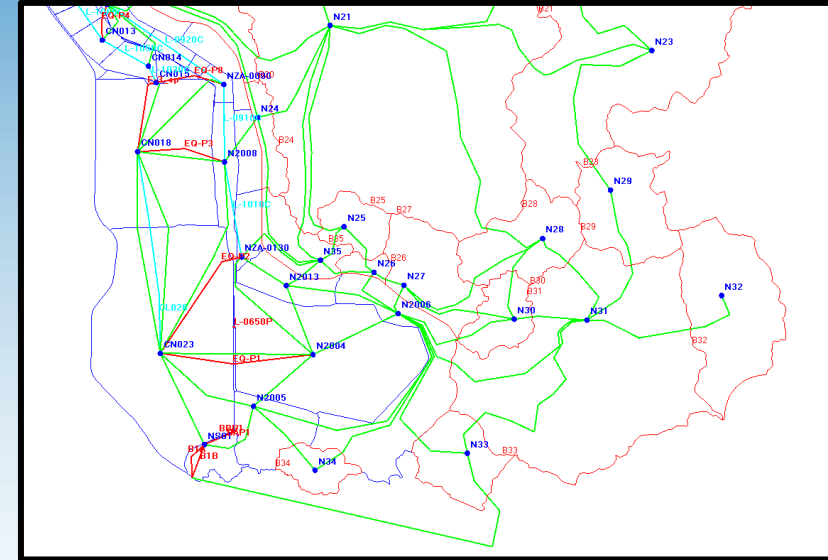


St. Johns River
Water Management District



Issues

Water Quality, Flood Protection, Vegetation Management



St. Johns River

Water Management District

Study Phases

1. Data collection and review
2. Water quality and flood protection assessment
3. Feasibility analysis

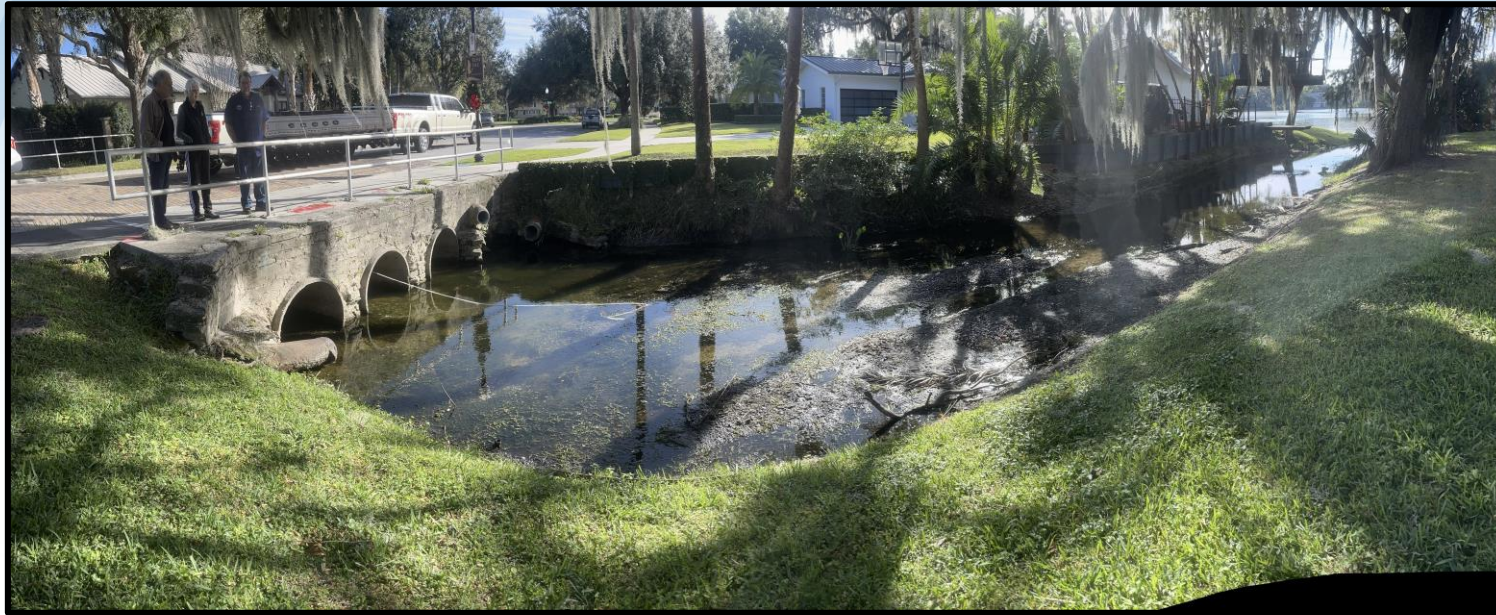


St. Johns River
Water Management District

Study Phases

Data Collection and Review

- Existing data collection and review
- Study area reconnaissance
- Nuisance vegetation assessment



Study Phases

Water Quality and Flood Protection Assessment

- Evaluation of existing stormwater infrastructure
- Nutrient load assessment
- Watershed modeling



Study Phases

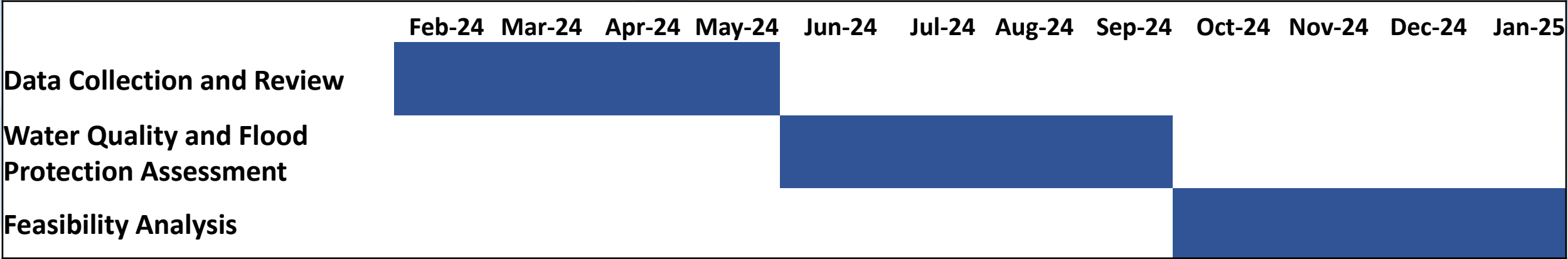
Feasibility Analysis

- Project concept identification
- Feasibility assessment
- Final feasibility report with long-term management plan



St. Johns River
Water Management District

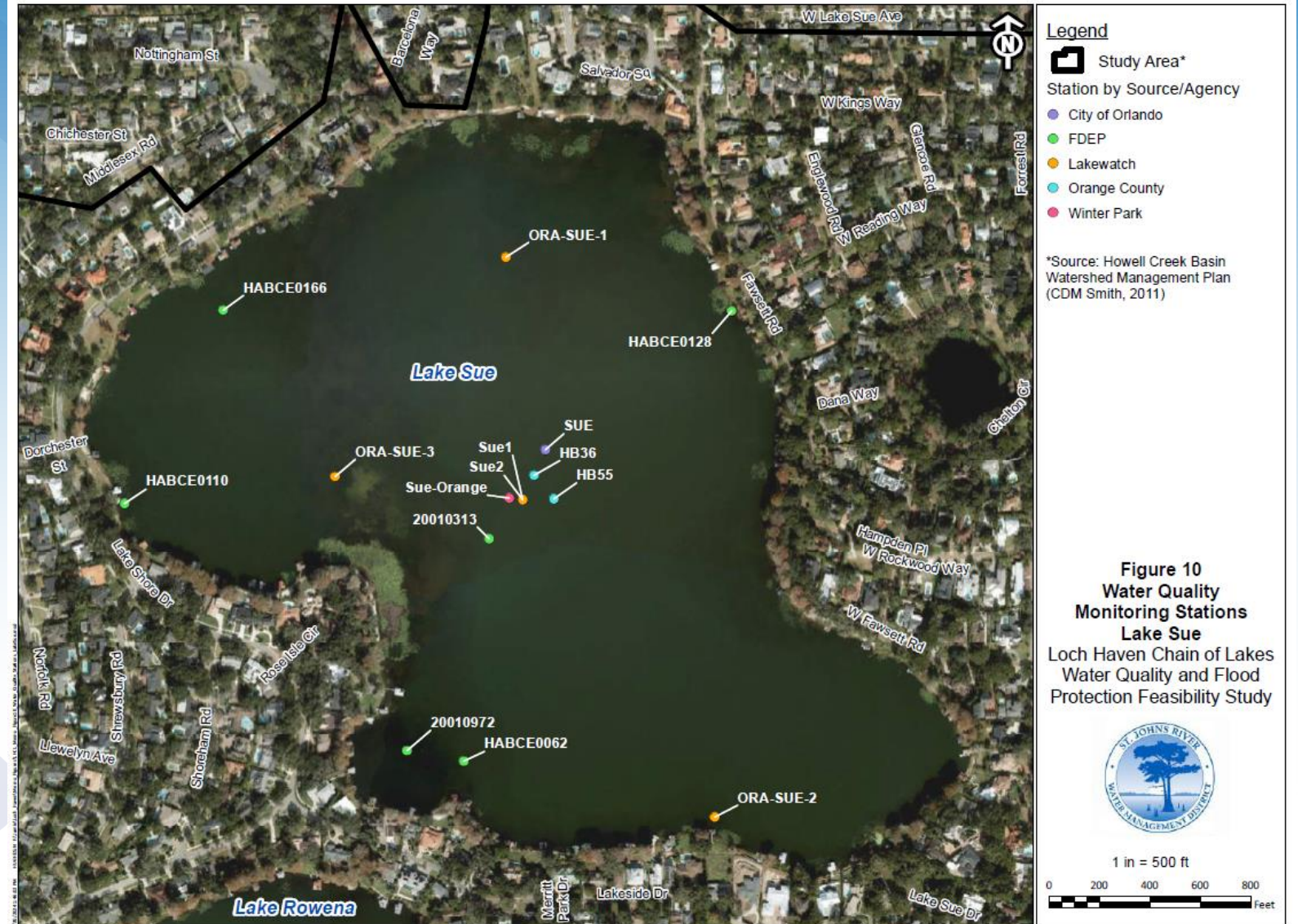
Schedule



Project Status

Data Collection

- Methodology and coordination efforts
- Available resources
- Data gap evaluation
- Reconnaissance

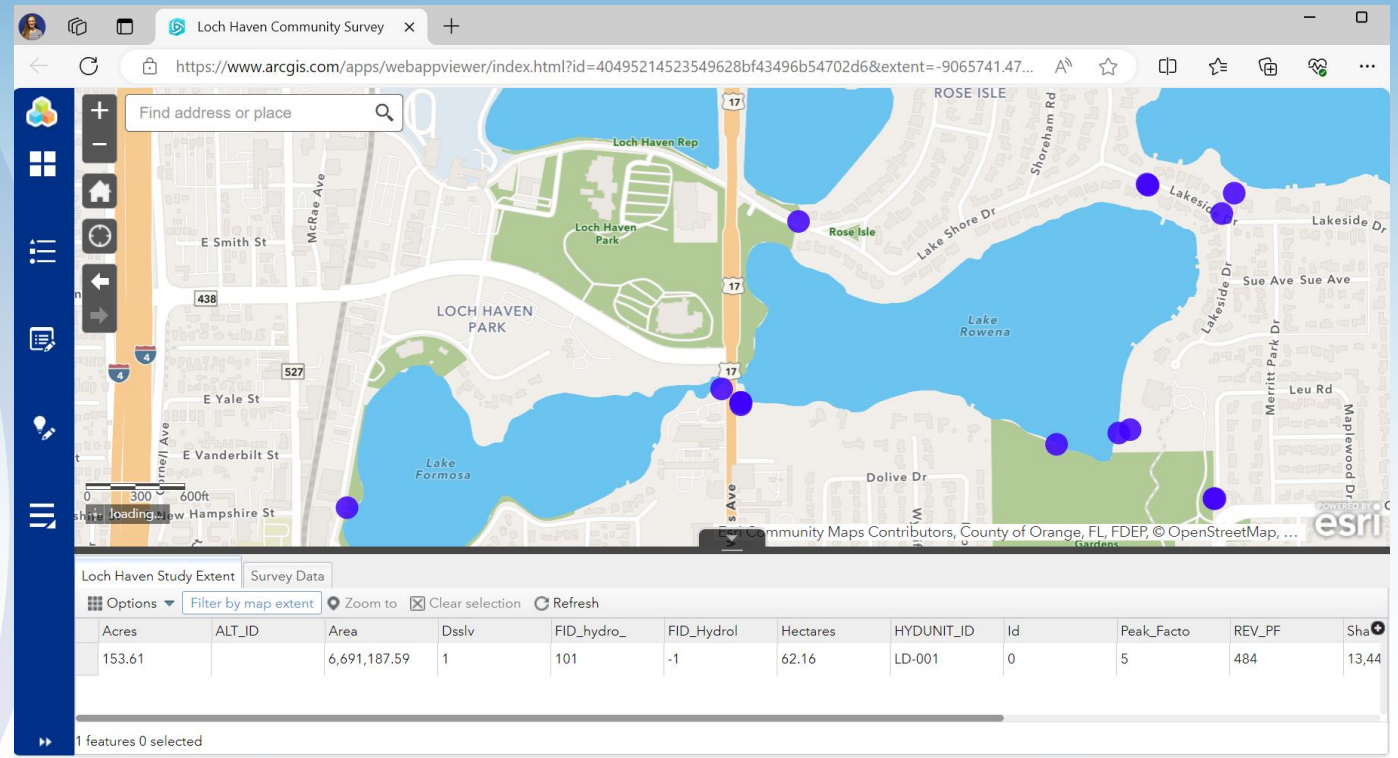


St. Johns River
Water Management District

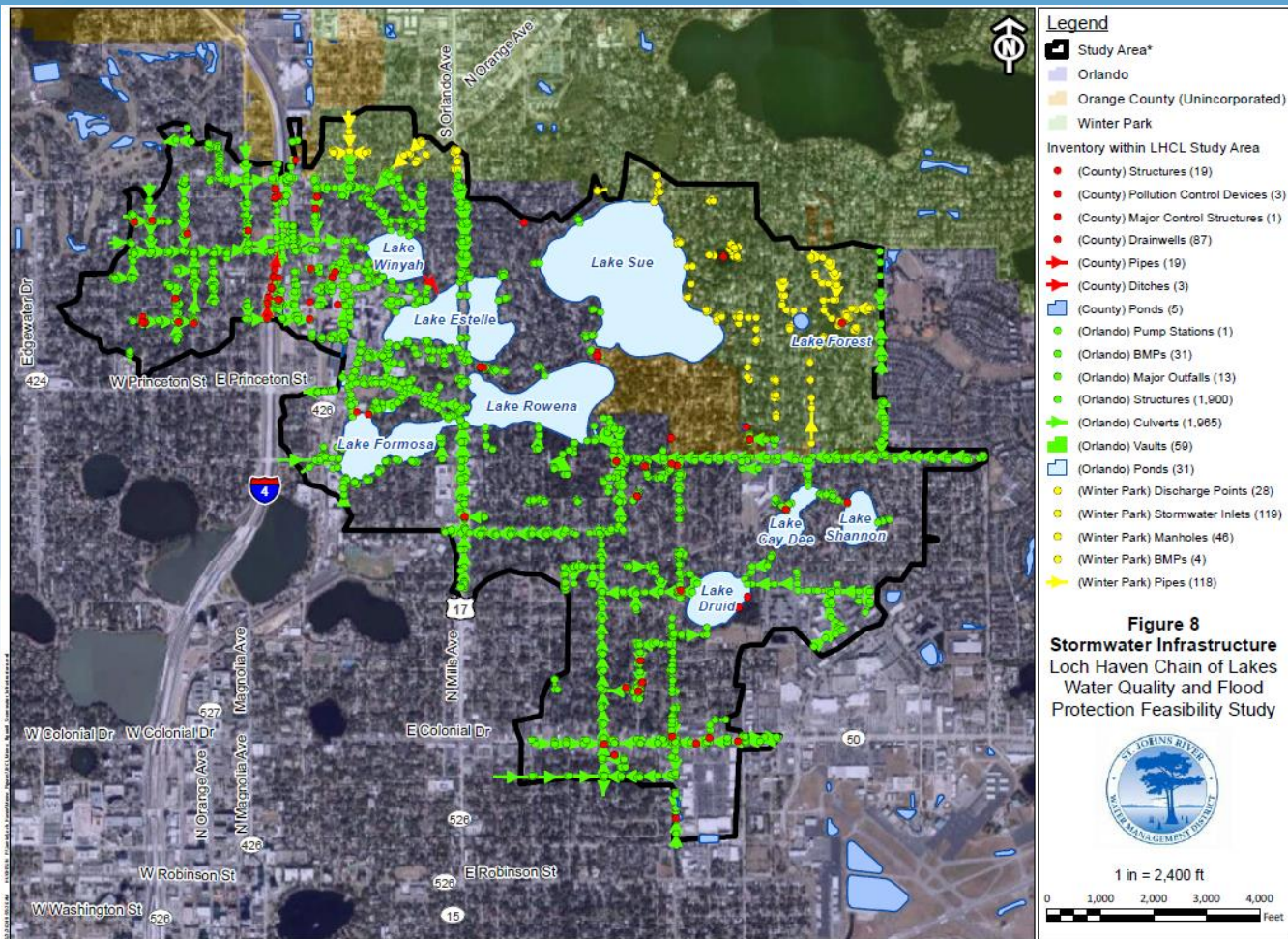
CDM
Smith

Methodology and Coordination Efforts

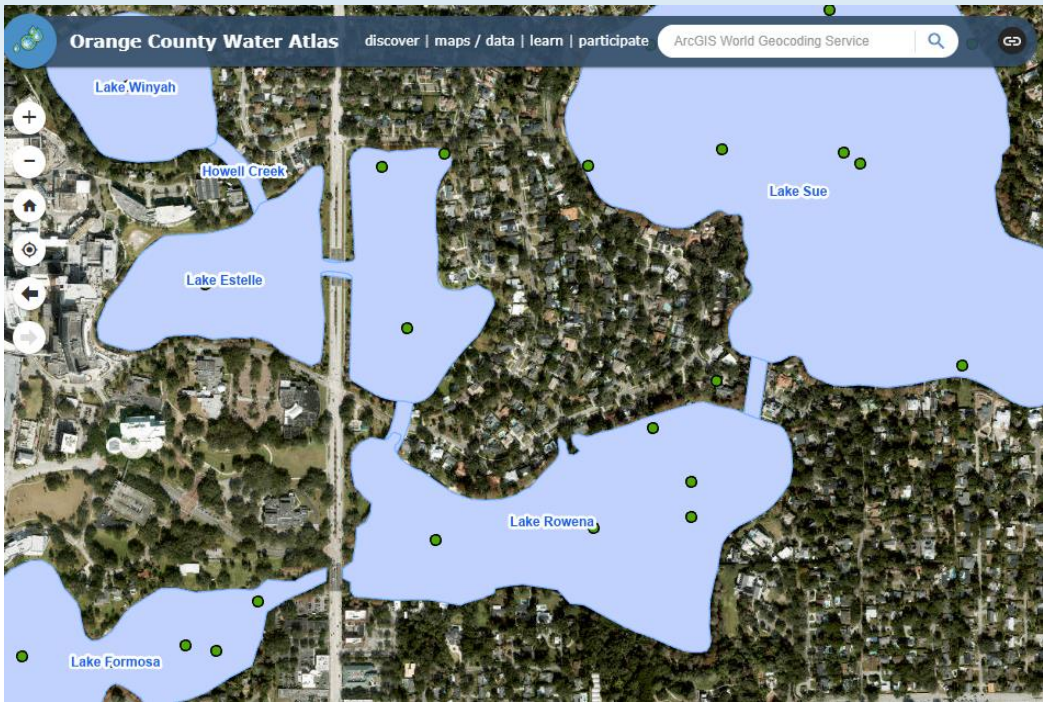
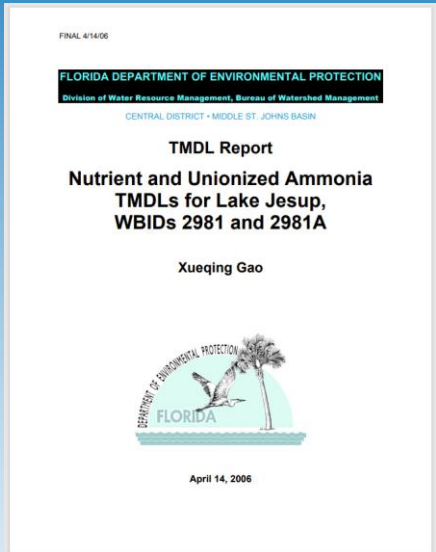
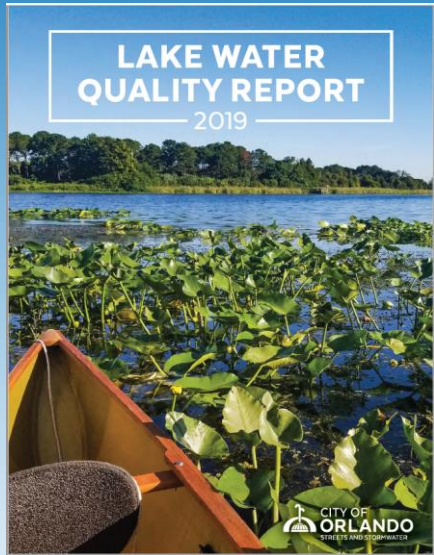
- Stakeholder involvement
- Workshops
- Online portal
- Requests and follow-up
- Field visits with stakeholders



Available Resources



*Source: Howell Creek Basin
 Watershed Management Plan
 (CDM Smith, 2011)



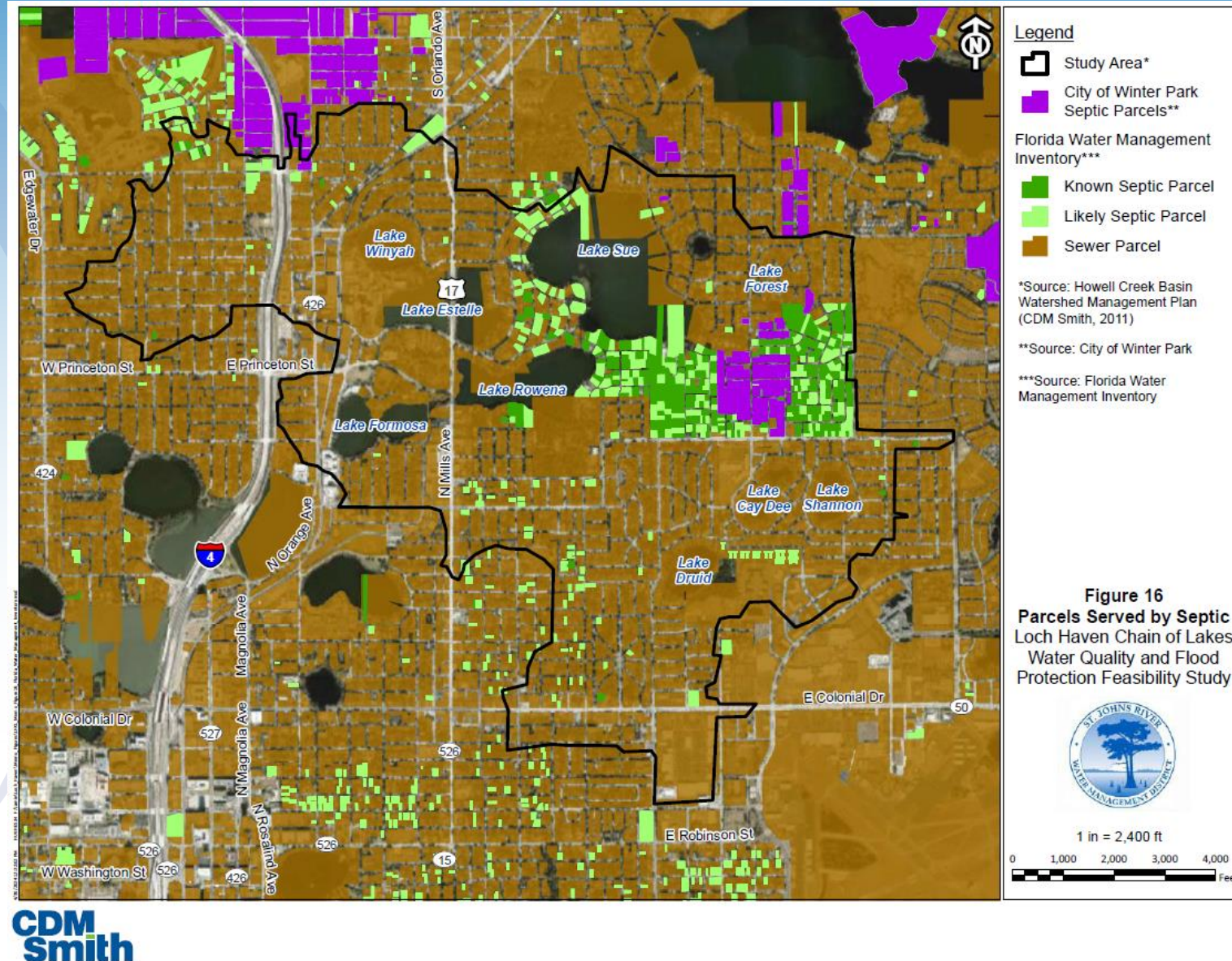
CDM
 Smith



St. Johns River
 Water Management District

Data Gap Evaluation

- Initial findings
- Key data gaps
 - Known problem areas
 - Planned or ongoing Improvements and projects



Reconnaissance

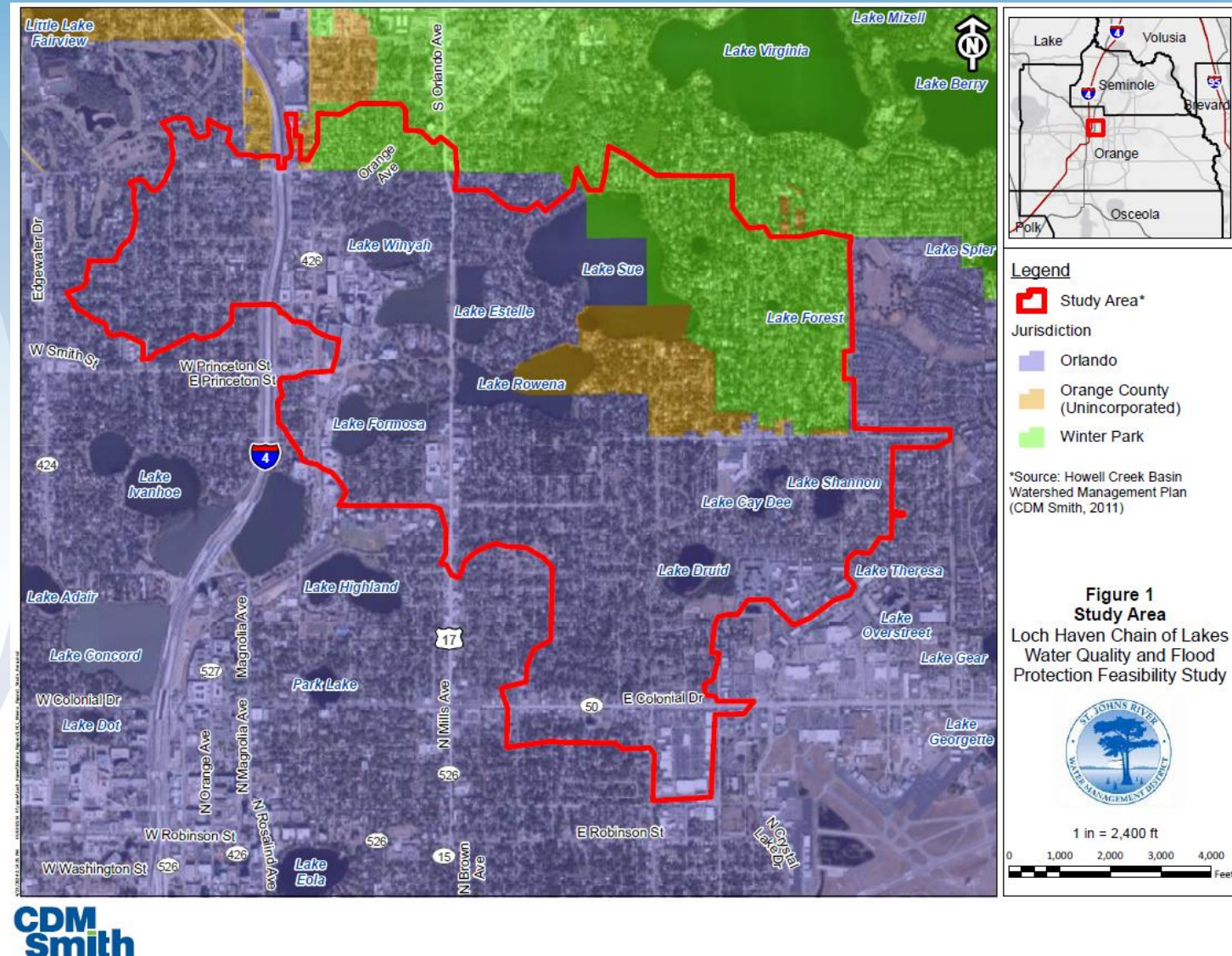


St. Johns River
Water Management District

Multi-Jurisdictional Coordination

Successes and Takeaways

- Scope development
- Factors for success
- Challenges
- Multi-jurisdictional benefits
- Template for future multi-jurisdictional efforts



Next Steps

- Potential project identification
- Ongoing data collection
- Water quality and flood protection assessment

Final Feasibility Assessment is expected in February 2025



St. Johns River
Water Management District

**CDM
Smith**

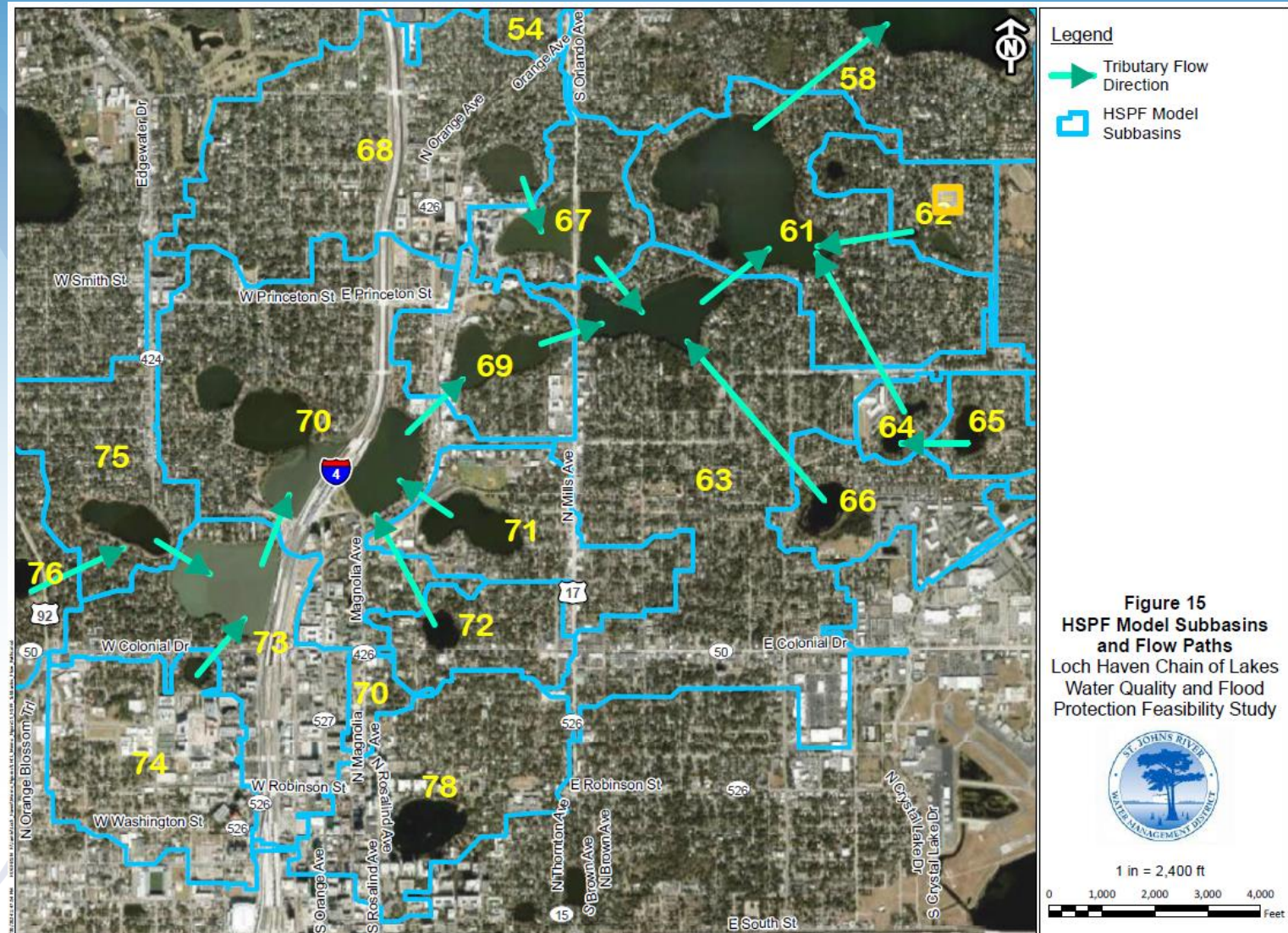


Figure 15
HSPF Model Subbasins
and Flow Paths
Loch Haven Chain of Lakes
Water Quality and Flood
Protection Feasibility Study



1 in = 2,400 ft
0 1,000 2,000 3,000 4,000
Feet

Thank you!



St. Johns River
Water Management District