



# Tune in to *Flip My Florida Yard* for Innovative Public Education

Why the Nonpoint Source Management Program is sponsoring *Flip My Florida Yard*, a yard makeover television show airing in March 2021

**Emily Brown:**

Education Coordinator  
Nonpoint Source Pollution  
Management Program  
[Emily.Brown@FloridaDEP.gov](mailto:Emily.Brown@FloridaDEP.gov)

**Amanda Peck**

Program Administrator  
Nonpoint Source Pollution  
Management Program  
[Amanda.Peck@FloridaDEP.gov](mailto:Amanda.Peck@FloridaDEP.gov)

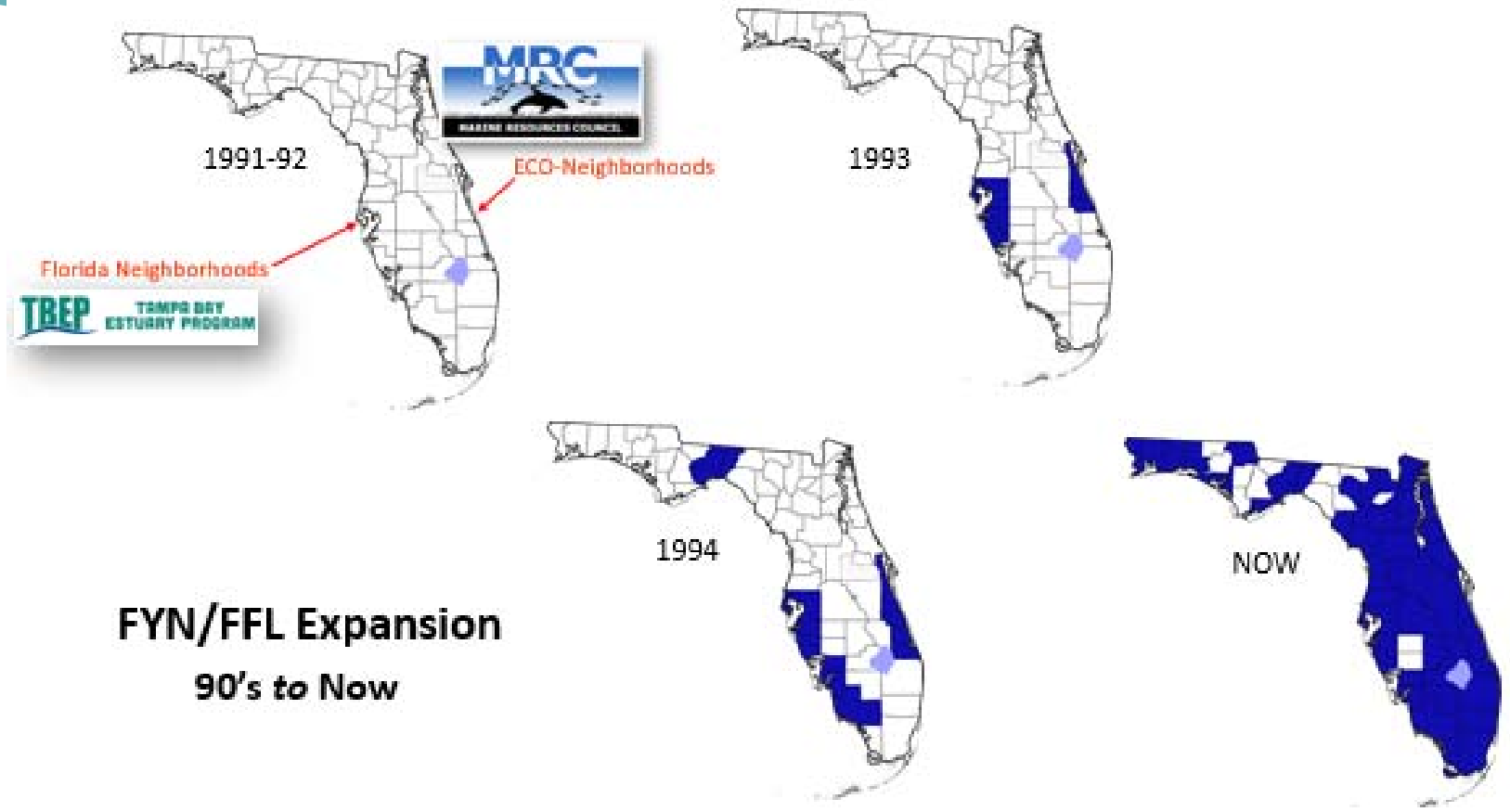


# The Florida-Friendly Landscaping™ (FFL) Program

- **26 year partnership between Florida DEP and the University of Florida's Institute of Food and Agricultural Sciences**
- **Statewide extension partners teaching science-based landscaping best management practices**
- **Conducts the Green Industries Best Management Practices certification program, which is legislatively required for commercial fertilizer applicators**

Visit  
[FloridaFriendlyLandscaping.com](http://FloridaFriendlyLandscaping.com)  
to learn more





**FYN/FFL Expansion**  
**90's to Now**



# The Florida-Friendly Landscaping™ (FFL) Program

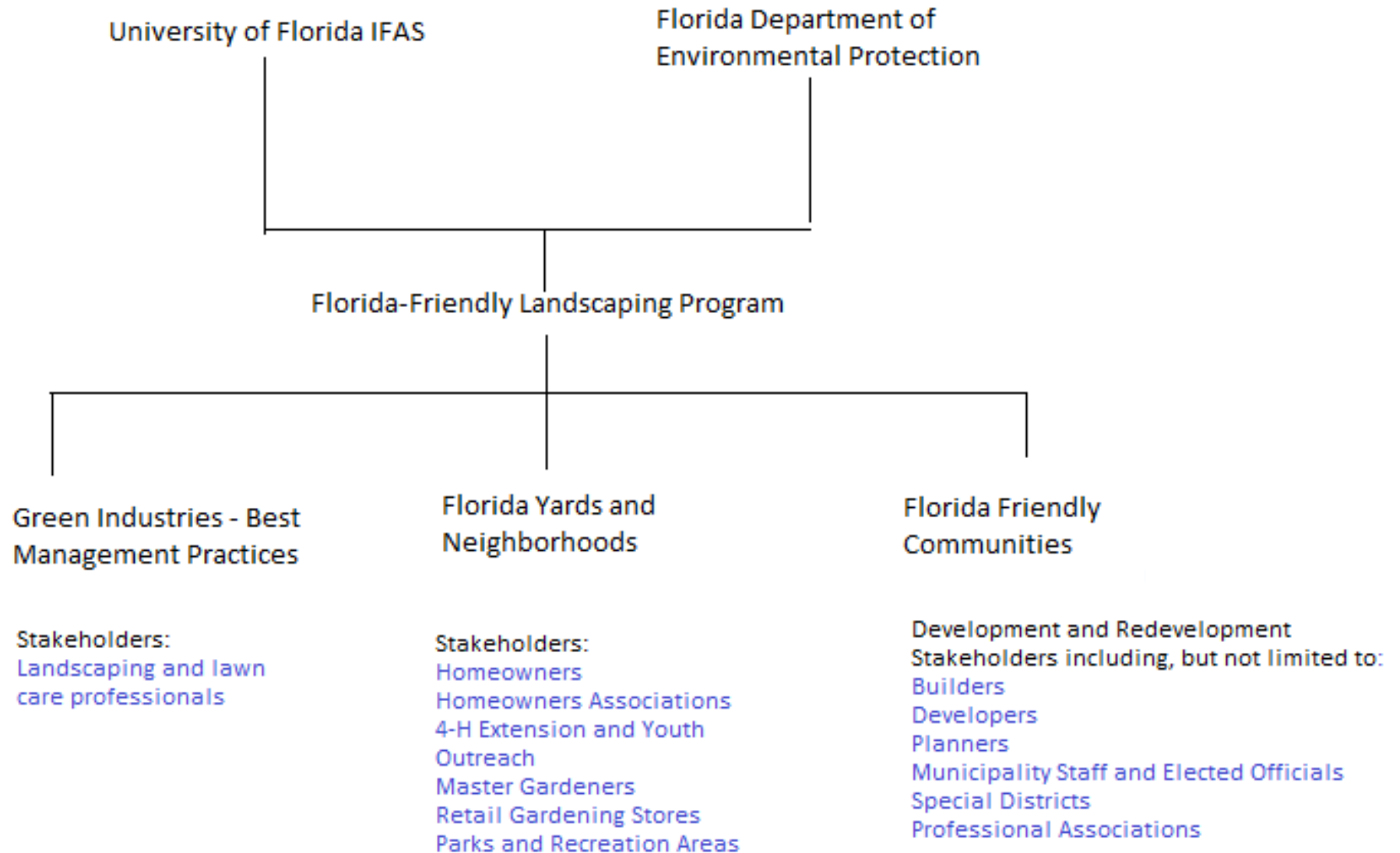
- **26 year partnership between Florida DEP and the University of Florida's Institute of Food and Agricultural Sciences**
- **Statewide extension partners teaching science-based landscaping best management practices**
- **Conducts the Green Industries Best Management Practices certification program, which is legislatively required for commercial fertilizer applicators**

Visit  
[FloridaFriendlyLandscaping.com](http://FloridaFriendlyLandscaping.com)  
to learn more





# FFL Program Structure





UF/IFAS Extension's Florida-Friendly Landscaping™ (FFL) program and the Center for Landscape Conservation & Ecology (CLCE) partner with state agencies, local governments, and nonprofit organizations to safeguard our water for future generations.



<sup>1</sup>Water 2070 project (FDACS, UF Geoplan Center, 1000 Friends of Florida)  
<sup>2</sup>U.S. Environmental Protection Agency (EPA), 2015  
<sup>3</sup>Forbes et al. February 2017. Estimating Benefits of Residential Outdoor Water Conservation: A Step-by-Step Guide. <http://wds.ifas.ufl.edu/fo1009> and Boyer and Duke. August 2015. Estimated Water Savings Potential of Florida-Friendly Landscaping Activities. <http://wds.ifas.ufl.edu/a515>

# SAVING FLORIDA'S WATER SUPPLY, DROP BY DROP

## WATER DEMAND

Water demand already exceeds supply in some parts of Florida, and projections show the state could double its current water usage by 2070 if population growth, water-use habits, and irrigation practices do not change.<sup>1</sup>



At least **50%** of Florida household water usage is for landscape irrigation.



The average U.S. household spends more than **\$1,000** per year on water.<sup>2</sup>

## WATER CONSERVATION

In 2019, **156,000** residents and landscape professionals participated in water conservation programs, taught by **89** UF/IFAS Extension faculty statewide.

Follow-up surveys showed...

- 75%** followed local water restrictions
- 73%** reduced irrigation if adequate rainfall
- 67%** reduced irrigation to 2 days/week
- 53%** reduced irrigation in winter months

## MAKING AN IMPACT<sup>3</sup>

**467,145,870** gallons of water saved... enough water to supply **5,308** households with water for one year.

**\$1,546,253** saved on utility bills.

**\$1,214,579** saved by utility companies on water preparation/delivery costs.





# Reducing Nitrogen Pollution

## 2019 FFL BMAP N-Removal

Adopted BMAP (2019 STAR List)	FYN N-Removal (lbs-N/yr)
Lake Okeechobee OKEE	46,608
Calosahatchee River CALO	19,178
St. Lucie River Estuary STLU	9,396
Lake Jesup JESU	6,374
Wekiva River WEKR	5,976
North IRL NIRL	5,333
Chassahowitzka River CHHO	3,623
Banana IRL BIRL	3,132
Silver Springs SILV	3,010
Harney Monroe HAMO	2,952
Lower SJR Main LSJM	2,511
Rainbow Springs RAIN	2,270
Kings Bay KING	2,002
Everglades West Coast Basin EWCO	835
Gemini Springs GEMI	467
Wakulla Springs WAKU	189
Jackson Blue Spring JABL	60
Central IRL CIRL	0
Oklawaha River OKLA	0
<b>Total</b>	<b>113,912 lbs-N/yr</b>

Pending BMAPs (From the BMAPs)	FYN N-Removal (lbs-N/yr)
Wekiwa/Rock Springs (2018)	5,977
Silver Springs/River (2018)	2,684
Volusia Blue Spring (2018)	906
Santa Fe River (2018)	0
Suwannee/Withlacoochee River (2018)	0
<b>Total</b>	<b>9,567 lbs-N/yr</b>

2019 Total = 123,479 lbs-N/yr



# 9 FFL Principles

- 1. Right Plant, Right Place**
- 2. Water Efficiently**
- 3. Fertilize Appropriately**
- 4. Mulch**
- 5. Attract Wildlife**
- 6. Manage Yard Pests Responsibly**
- 7. Recycle**
- 8. Reduce Storm Water Runoff**
- 9. Protect the Waterfront**

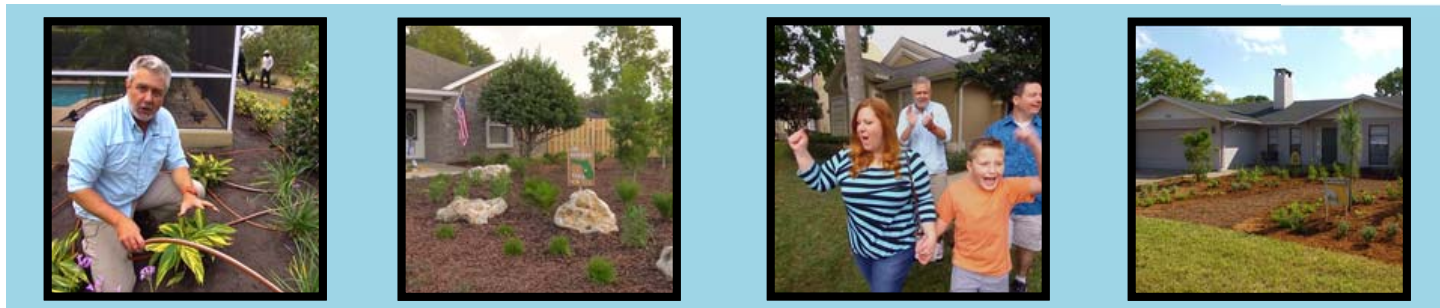




# Flip My Florida Yard

- ❖ One Hour Special
  - Developed from original 5 episodes sponsored by the Florida Nursery, Growers and Landscape Association
  - Available on The Discover Florida Channel [www.discoverfloridachannel.com](http://www.discoverfloridachannel.com)
- ❖ Season One
  - Focused around the 9 FFL Principles
  - Strong UF/IFAS Extension presence
- ❖ Commercials
  - Florida-Friendly Landscaping™ is for everyone
  - Promoting Florida-Friendly Landscaping™ Professionals

**FLIP MY  
FLORIDA  
YARD** 





# Statewide Representation





# Yard Science



Yard Science Topic	Expert
"Follow the Water"	Kevin Coyne (DEP)
Stormwater Nitrogen	Dave Whiting (DEP)
Algae Growth	Dr. Tom Frazer (DEP, former UF)
Reclaimed Water	Ed Torres (Director of Public Works, Altamonte Springs)
Pollinators	Dr. Jaret Daniels (UF)
Yard Biodiversity	Dr. Gail Hansen (UF)
Turf Science/Breeding	Dr. Kevin Kenworthy (UF)
Soil Science/Testing	Dr. Rao Mylavarapu (UF)
Integrated Pest Management	Dr. Norm Leppla (UF)
Root Rot	Dr. Phil Harmon (UF)



# Flip My Florida Yard

## State Parks

- Camp Helen and Eden Gardens
- Lake Louisa
- De Leon Springs and Hontoon Island
- Hugh Taylor Beach
- Hillsborough River
- Wekiwa Springs
- John Pennekamp Coral Reef
- Paynes Prairie Preserve
- Alfred B. Maclay Gardens
- Koreshan



**FLORIDA**  
**STATE PARKS**

*...the Real Florida*<sup>SM</sup>



**Amanda Peck**

**[Amanda.Peck@FloridaDEP.gov](mailto:Amanda.Peck@FloridaDEP.gov)**

**Emily Brown**

**[Emily.Brown@FloridaDEP.gov](mailto:Emily.Brown@FloridaDEP.gov)**