

# | 2022 STORMWATER UTILITY REPORT



# FSA

Florida Stormwater Association





FSA 2022 Stormwater Utility Report

## Acknowledgements

The Florida Stormwater Association wishes to express its appreciation to the following 2022 Stormwater Utility Report sponsors. The distribution of this document would not have been possible without their support.



Elie Araj, PE, D.WRE, CFM  
Applied Sciences Consulting  
1000 N Ashley Drive, Ste 500  
Tampa, FL 33602  
813-228-0900 | earaj@appliedfl.com



Eric Gonzalez  
Advanced Drainage Systems  
115 NW Crown Point Road  
Winter Garden, FL 34787  
786-618-0714 | eric.gonzalez@adspipe.com



Peter Moore, PE, F.ASCE FACEC  
Chen Moore and Associates  
500 W Cypress Creek Road, Ste 630  
Fort Lauderdale, FL 33309  
954-730-0707 | pmoore@chenmoore.com



Mark Ellard, PE, CFM, D.WRE, ENV SP  
Geosyntec Consultants  
3504 Lake Lynda Drive, Ste 155  
Orlando, FL 32817  
407-321-7030 | mellard@geosyntec.com



David G. Jahosky  
Government Services Group  
1500 Mahan Drive, Ste 250  
Tallahassee, FL 32308  
866-896-4747 | djahosky@govserv.com



Dikran Kalaydjian  
Land & Water Engineering Science  
8950 Dr. MLK Jr. Street N, Ste 205  
St. Petersburg, FL 33702  
727-202 8958 | dikran@lwes.net



Richard Neal  
Wapro  
150 N Michigan Avenue #1950  
Chicago, IL 60601  
407-398-9868 | richard.neal@wapro.com



FSA 2022 Stormwater Utility Report

## The Florida Stormwater Association

*Leadership in Stormwater Management and Utilities*

FSA was organized in 1993 to assist professionals in the public and private sectors as they confront the problems associated with stormwater management, permitting and finance. FSA provides three core services to its members:

- ◆ **Training and Education** – FSA conducts two statewide conferences, one seminar, and two webinars annually. In addition, FSA offers over 25 training events a year for stormwater field staff through our Fogarty Training Center. The Fogarty Training Center was created in response to the need for in house, up-to-date, high-quality training. Training Center courses fulfill most of the training requirements of your MS4 permit. Visit the [Fogarty Training Center](#) for a complete listing of courses.
- ◆ **Communications and Information Sharing** – The FSA Stormwater Utilities Survey is conducted and distributed every two years. An abbreviated listing of current stormwater rates is updated frequently. FSA's [e-newsletter "FastTracks"](#) is published ten times a year. FSA's website contains previously published editions of the newsletter, a membership directory, communications tools, regulatory information, and access to our manual on *Establishing Stormwater Utilities in Florida*.
- ◆ **Advocacy** – The Association is actively represented during the Legislative Session, in front of agencies, and in state and federal courts. We support legislation that is of benefit to stormwater utilities and local governments in the areas of stormwater management and finance. The Association monitors the activities of FDEP, EPA, and other state and federal regulatory initiatives, and challenges to stormwater utilities. As appropriate, the association participates in cases that are of statewide or national importance.

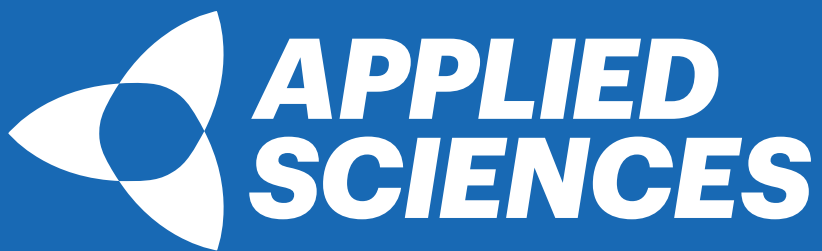
### Not a Member?

Please contact us if you would like more information about FSA or membership.

Florida Stormwater Association  
PO Box 13688, Tallahassee, FL 32317 - [www.florida-stormwater.org](http://www.florida-stormwater.org)  
[info@florida-stormwater.org](mailto:info@florida-stormwater.org) - (888) 221-3124

**Water Management**  
**Vulnerability Studies**  
**Urban Design**  
**Green Infrastructure**  
**Stormwater Utilities**







[appliedfl.com](http://appliedfl.com)





FSA 2022 Stormwater Utility Report

## Table of Contents

	<b>Introduction</b>	2
	<b>1 - Utility Characteristics</b>	3
	<b>2 - Utility Fees and Rates</b>	9
	<b>3 - Stormwater Program</b>	33
	<b>4 - Public Information Effort</b>	47
	<b>Appendix</b>	49
	Survey Respondents	50
	More About FSA	60

Copyright © 2022 by the Florida Stormwater Association, Inc. All rights reserved.

No part of this publication may be reproduced, stored in a retrieval system, or transmitted, in any form or by any means, electronic, mechanical, photographically or otherwise, without the prior written permission of the Florida Stormwater Association, PO Box 13688, Tallahassee, FL 32317.



FSA 2022 Stormwater Utility Report

## Introduction

This Report presents the results of the Association's 14<sup>th</sup> biennial Stormwater Utilities Survey in Florida. Its purpose is to provide information to both managers and policy-makers in state and local government. Trends in the characteristics of the stormwater programs, utility rates and other practices within local governments can now be observed by comparing survey results through 2022.

Florida has 67 counties and 412 cities. Short of surveying *every* city and county, it is difficult to determine exactly how many stormwater utilities exist in the state. FSA's best estimate is that there are now approximately 170 local governments that have established stormwater utilities pursuant to Chapter 403, Florida Statutes or their own home rule powers. 128 stormwater utilities responded to the 2022 survey questionnaire.

We expect the demand for stormwater utilities to continue for several reasons: The Florida Supreme Court has consistently upheld the validity of such fees; there is (generally) more public support for funding programs with user fees as opposed to ad valorem or other general taxes; and, the process of implementing Numeric Nutrient Criteria and the multi-billion dollar Total Maximum Daily Load program in Florida continue to drive costs higher.

As one might assume, service areas dedicated exclusively to cities constitute a significant majority of stormwater utilities - in part reflecting the relative ease of attaching a user charge onto an existing billing mechanism. Most stormwater utilities are located within a department of public works and have used impervious area as the basis for calculating the fee.

As in earlier surveys, revenue generated from stormwater utilities represents a significant source of funds to address stormwater pollution and flooding problems. Most jurisdictions report that utility charges are adequate to meet most administrative costs but not for needs associated with capital improvement programs. Whether stormwater utility fees can be raised at a rate to keep pace with the costs of TMDLs and new water quality criteria remains to be seen.

The Association appreciates the assistance of those who completed the survey instrument. We hope that you find this Report to be of value.

# Utility Characteristics

Applied Technology & Management (ATM) has joined Geosyntec! ATM is a leading engineering and consulting firm focused on coastal, waterfront and water resources projects.

# NATIONAL LEADERS IN STORMWATER AND WATERSHED MANAGEMENT ARE JUST AROUND THE CORNER

Geosyntec Consultants provides engineering and consulting services to solve complex problems involving the environment, natural resources, and civil infrastructure.

Based in Florida for over 35 years, the firm has over 1700 engineers, scientists, and support personnel in more than 90 offices throughout the U.S. and abroad.

Orlando | Tampa | Clearwater | Jacksonville | Boca Raton | Gainesville | Titusville | Pensacola | Tallahassee  
St. Augustine | West Palm Beach



## INFRASTRUCTURE

- Resiliency & Adaptation
- Basin Studies
- Stormwater Retrofits
- Stormwater Utility Master Plans
- Erosion & Sediment Control
- Drainage Design
- Integrated Water Resources
- Vulnerability Assessments
- Coastal/Marine Structures



## WATER QUALITY

- Watershed Management
- BMP Retrofits & Monitoring
- Low Impact Design
- Green Infrastructure
- TMDL & NPDES Support
- Pollutant Load Modeling
- Sediment Assessment
- Lake Management



## NATURAL RESOURCES MANAGEMENT

- Environmental Resource Permitting
- Natural Systems
- Hydromodification
- Geomorphology
- Conservation & Restoration
- Living Shorelines

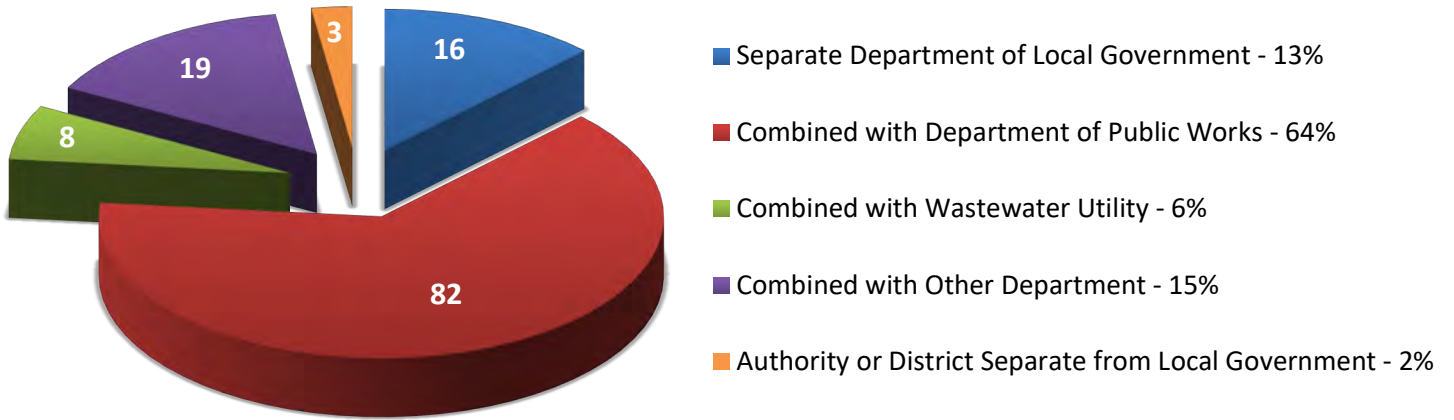


## HYDROLOGIC AND HYDRAULIC MODELING

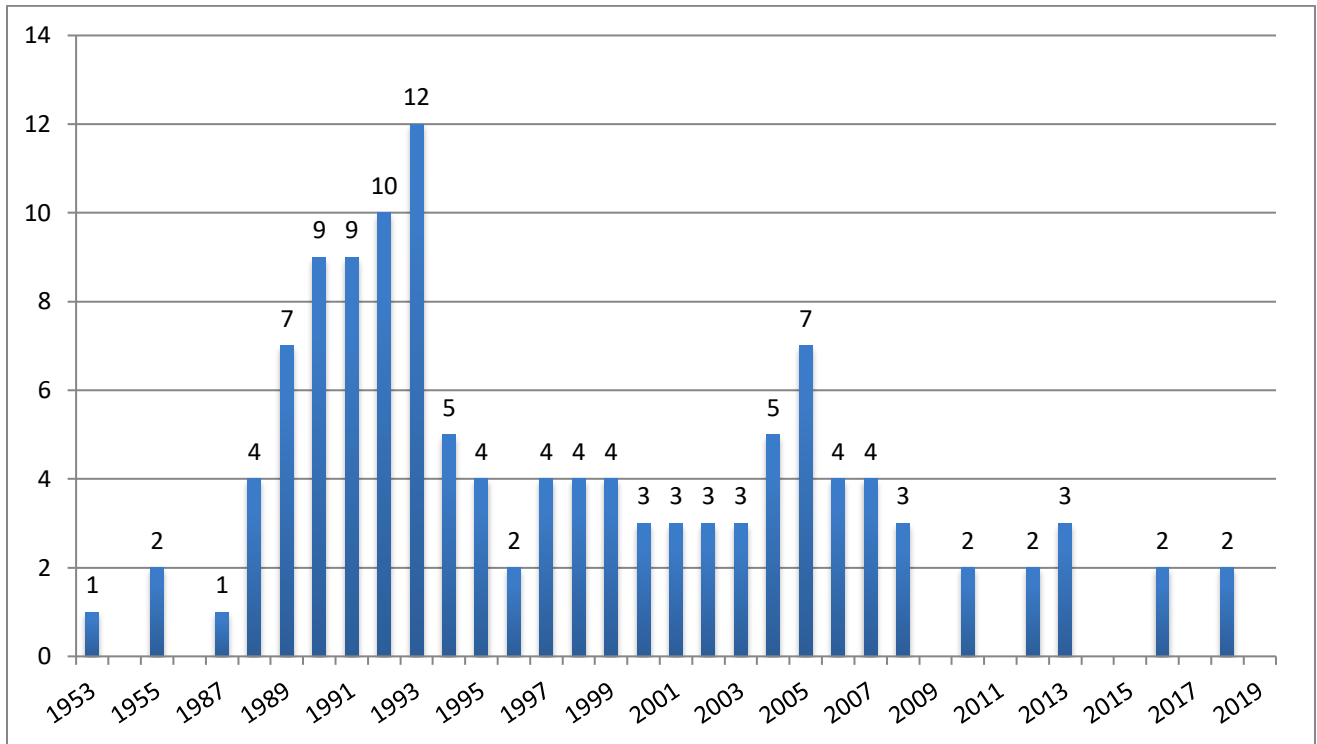
- Surface Water
- Groundwater
- Floodplain Management
- Integrated Modeling
- Climate Change
- Level of Service
- GIS Visualization



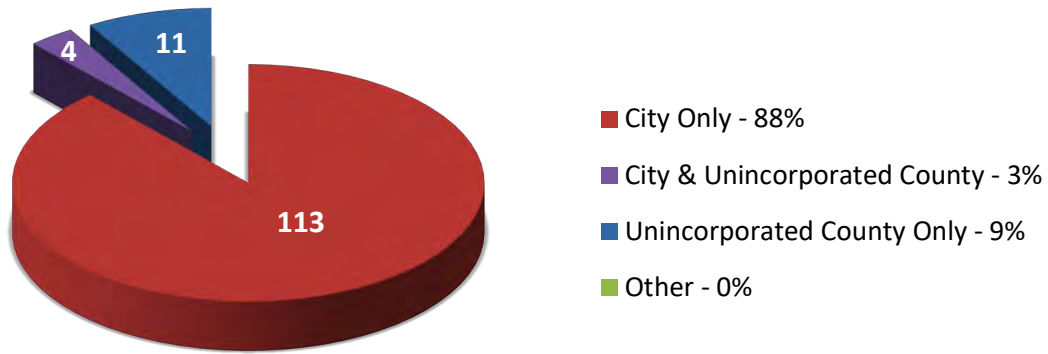
**1-1 How is your SWU organized?**



**1-2 What year was your SWU established?**



### 1-3 What jurisdiction does your SWU serve?



### 1-4 What is the physical area served by your SWU?

Average area of respondents is 66,071 acres (2020 reported average area was 69,667).

Jurisdiction	Acres	Jurisdiction	Acres	Jurisdiction	Acres
Alachua County	45,200	City of Fort Meade	2,880	City of Miami Springs	2,240
Bay County	408,960	City of Fort Myers	31,360	City of Minneola	7,341
Brevard County	553,634	City of Fort Pierce	22,306	City of Mulberry	4,176
City of Altamonte Springs	6,191	City of Fort Walton Beach	4,848	City of Naples	8,000
City of Auburndale	12,887	City of Fruitland Park	2,600	City of New Port Richey	2,880
City of Aventura	152,460	City of Gainesville	41,310	City of New Smyrna Beach	26,816
City of Bradenton Beach	640	City of Green Cove Springs	4,700	City of Niceville	5,400
City of Callaway	6,128	City of Gulf Breeze	1,740	City of North Lauderdale	2,976
City of Cape Canaveral	1,472	City of Gulfport	2,129	City of North Miami	6,400
City of Cape Coral	76,800	City of Hialeah	12,800	City of Oakland Park	5,268
City of Casselberry	4,812	City of Homestead	9,986	City of Ocala	29,028
City of Clearwater	16,000	City of Indian Harbour Beach	1,920	City of Ocoee	10,048
City of Clermont	12,238	City of Jacksonville	537,664	City of Oldsmar	3,200
City of Cocoa	9,440	City of Key Colony Beach	285	City of Orange City	4,653
City of Cocoa Beach	3,840	City of Key West	3,378	City of Orlando	71,489
City of Coconut Creek	7,200	City of Kissimmee	13,580	City of Ormond Beach	23,217
City of Cooper City	5,146	City of Lake Alfred	3,200	City of Palm Bay	43,520
City of Coral Gables	8,384	City of Lake Mary	6,324	City of Palm Coast	34,528
City of Daytona Beach	42,240	City of Lake Worth Beach	4,480	City of Pensacola	16,000
City of DeBary	16,000	City of Lakeland	47,955	City of Pinellas Park	10,709
City of Deerfield Beach	10,250	City of Largo	12,246	City of Pompano Beach	16,051
City of DeLand	12,486	City of Longwood	3,000	City of Port Richey	1,920
City of Delray Beach	10,240	City of Madeira Beach	192	City of Port St. Lucie	75,600
City of Doral	96,000	City of Marathon	5,555	City of Riviera Beach	7,000
City of Dunedin	6,814	City of Margate	5,868	City of Rockledge	7,590
City of Edgewater	15,977	City of Mascotte	1,800	City of Safety Harbor	3,200
City of Eustis	18,139	City of Melbourne	32,947	City of Satellite Beach	1,890
City of Fernandina Beach	10,240	City of Miami	22,754	City of South Pasadena	384
City of Fort Lauderdale	23,240	City of Miami Gardens	14,080	City of St. Augustine	8,900

### 1-4 What is the physical area served by your SWU? (continued)

Average area of respondents is 66,071 acres (2020 reported average area was 69,667).

Jurisdiction	Acres	Jurisdiction	Acres	Jurisdiction	Acres
City of St. Pete Beach	1,408	City of West Palm Beach	35,424	Town of Cutler Bay	6,720
City of St. Petersburg	37,920	City of Wilton Manors	2,496	Town of Jupiter	15,360
City of Stuart	4,200	City of Winter Garden	11,513	Town of Lantana	1,280
City of Sunny Isles Beach	1,140	City of Winter Haven	26,349	Town of Malabar	7,200
City of Sweetwater	2,797	City of Winter Park	6,509	Town of Melbourne Beach	832
City of Tallahassee	66,360	Hillsborough County	561,268	Town of Pembroke Park	960
City of Tamarac	8,000	Leon County	375,040	Town of Redington Shores	235
City of Tampa	75,289	Marion County	560,000	Town of Surfside	361
City of Tarpon Springs	10,816	Miami-Dade County	1,280,000	Village of Indian Creek	259
City of Tavares	4,620	Pasco County	476,800	Village of Key Biscayne	800
City of Titusville	19,500	Pinellas County	65,890	Village of Palm Springs	2,455
City of Umatilla	23,040	Polk County	1,170,000	Village of Wellington	15,465
City of West Melbourne	6,752	Sarasota County	152,464	Volusia County	529,920
City of West Miami	453	Town of Belleair	1,792		

### 1-5 What is the population served by your SWU?

Average population of respondents is 90,455. (2020 reported average population was 85,196).

Jurisdiction	Population	Jurisdiction	Population	Jurisdiction	Population
Alachua County	100,000	City of Delray Beach	70,000	City of Kissimmee	60,375
Bay County	69,946	City of Doral	70,000	City of Lake Alfred	5,120
Brevard County	226,092	City of Dunedin	36,381	City of Lake Mary	17,499
City of Altamonte Springs	46,231	City of Edgewater	24,153	City of Lake Worth Beach	37,000
City of Auburndale	16,865	City of Eustis	23,407	City of Lakeland	110,000
City of Aventura	44,500	City of Fernandina Beach	12,000	City of Largo	83,071
City of Bradenton Beach	1,500	City of Fort Lauderdale	182,760	City of Longwood	16,876
City of Callaway	15,216	City of Fort Meade	5,800	City of Madeira Beach	4,511
City of Cape Canaveral	9,972	City of Fort Myers	86,400	City of Marathon	8,500
City of Cape Coral	200,000	City of Fort Pierce	46,000	City of Margate	58,023
City of Casselberry	29,751	City of Fort Walton Beach	21,971	City of Mascotte	6,700
City of Clearwater	109,907	City of Fruitland Park	4,000	City of Melbourne	83,319
City of Clermont	44,801	City of Gainesville	141,085	City of Miami	458,376
City of Cocoa	19,041	City of Green Cove Springs	8,000	City of Miami Gardens	109,000
City of Cocoa Beach	11,733	City of Gulf Breeze	6,600	City of Miami Springs	14,231
City of Coconut Creek	58,000	City of Gulfport	12,407	City of Minneola	18,354
City of Cooper City	34,031	City of Hialeah	242,000	City of Mulberry	4,609
City of Coral Gables	49,248	City of Homestead	81,092	City of Naples	25,000
City of Daytona Beach	72,647	City of Indian Harbour Beach	8,500	City of New Port Richey	16,728
City of DeBary	21,000	City of Jacksonville	982,080	City of New Smyrna Beach	30,515
City of Deerfield Beach	80,000	City of Key Colony Beach	4,500	City of Niceville	14,000
City of DeLand	35,500	City of Key West	26,444	City of North Lauderdale	44,841

### 1-5 What is the population served by your SWU? (continued)

Average population of respondents is 90,455. (2020 reported average population was 85,196).

Jurisdiction	Population	Jurisdiction	Population	Jurisdiction	Population
City of North Miami	63,000	City of St. Pete Beach	9,346	Marion County	312,317
City of Oakland Park	43,390	City of St. Petersburg	250,000	Miami-Dade County	1,102,955
City of Ocala	57,586	City of Stuart	16,173	Pasco County	470,391
City of Ocoee	47,295	City of Sunny Isles Beach	23,869	Pinellas County	275,535
City of Oldsmar	15,000	City of Sweetwater	21,781	Polk County	407,963
City of Orange City	12,862	City of Tallahassee	193,551	Sarasota County	328,991
City of Orlando	280,832	City of Tamarac	67,269	Town of Belleair	4,217
City of Ormond Beach	43,475	City of Tampa	377,165	Town of Cutler Bay	45,101
City of Palm Bay	119,000	City of Tarpon Springs	25,937	Town of Jupiter	65,000
City of Palm Coast	86,768	City of Tavares	17,385	Town of Lantana	12,000
City of Pensacola	52,000	City of Titusville	48,789	Town of Malabar	3,061
City of Pinellas Park	54,202	City of Umatilla	4,000	Town of Melbourne Beach	3,100
City of Pompano Beach	113,144	City of West Melbourne	28,127	Town of Pembroke Park	6,700
City of Port Richey	2,781	City of West Miami	8,257	Town of Redington Shores	2,400
City of Port St. Lucie	212,015	City of West Palm Beach	150,000	Town of Surfside	6,200
City of Riviera Beach	35,000	City of Wilton Manors	12,662	Village of Indian Creek	86
City of Rockledge	27,123	City of Winter Garden	47,245	Village of Key Biscayne	13,182
City of Safety Harbor	17,072	City of Winter Haven	50,000	Village of Palm Springs	23,250
City of Satellite Beach	10,617	City of Winter Park	30,522	Village of Wellington	60,000
City of South Pasadena	5,000	Hillsborough County	905,007	Volusia County	122,633
City of St. Augustine	15,000	Leon County	94,650		

### 1-6 How many accounts does your SWU serve?

Residential Average is 32,615 accounts: 30,408 are single family and 4,948 are multi-family.

Non-Residential Average is 2,699 accounts: 807 business, 140 institutional, 1,148 commercial and 151 industrial.

Jurisdiction	Residential	Non-Residential	Jurisdiction	Residential	Non-Residential
Alachua County	33,130	4,416	City of Cooper City	11,862	1,335
Bay County	37,647	1,452	City of Coral Gables	13,110	1,175
Brevard County	117,025	10,176	City of Daytona Beach	27,874	4,435
City of Altamonte Springs	6,826	591	City of DeBary	9,100	NR
City of Auburndale	6,796	2,491	City of Deerfield Beach	31,509	1,666
City of Aventura	12,000	275	City of Delray Beach	32,057	NR
City of Bradenton Beach	1,521	65	City of Dunedin	11,000	800
City of Callaway	5,909	213	City of Edgewater	10,020	494
City of Cape Canaveral	2,642	236	City of Eustis	10,537	864
City of Cape Coral	89,954	2,714	City of Fernandina Beach	6,457	612
City of Casselberry	8,328	417	City of Fort Lauderdale	72,562	9,205
City of Clearwater	28,209	3,042	City of Fort Meade	1,596	259
City of Clermont	32,875	2,412	City of Fort Myers	24,299	2,477
City of Cocoa	6,825	816	City of Fort Pierce	14,290	2,237
City of Cocoa Beach	3,071	247	City of Fort Walton Beach	8,206	1,151
City of Coconut Creek	9,549	139	City of Fruitland Park	2,145	184

FSA 2022 Stormwater Utility Report

**1-6 How many accounts does your SWU serve? (continued)**

Residential Average is 32,615 accounts: 30,408 are single family and 4,948 are multi-family.

Non-Residential Average is 2,699 accounts: 807 business, 140 institutional, 1,148 commercial and 151 industrial.

Jurisdiction	Residential	Non-Residential	Jurisdiction	Residential	Non-Residential
City of Gainesville	60,000	2,000	City of Rockledge	10,217	612
City of Green Cove Springs	2,800	379	City of Safety Harbor	7,559	300
City of Gulf Breeze	2,332	261	City of Satellite Beach	4,761	484
City of Gulfport	4,467	244	City of South Pasadena	602	NR
City of Hialeah	46,787	1,920	City of St. Augustine	13,855	1,922
City of Homestead	23,943	1,895	City of St. Pete Beach	3,993	3,915
City of Jacksonville	294,984	17,698	City of St. Petersburg	74,483	6,164
City of Key Colony Beach	1,439	127	City of Stuart	3,019	NR
City of Key West	13,493	1,075	City of Sunny Isles Beach	14,069	1,908
City of Kissimmee	27,882	3,190	City of Sweetwater	2,753	274
City of Lake Alfred	1,740	NR	City of Tallahassee	88,899	7,677
City of Lake Mary	5,262	471	City of Tamarac	33,340	320
City of Lake Worth Beach	21,022	3,096	City of Tampa	98,763	10,631
City of Lakeland	47,925	2,876	City of Tarpon Springs	8,132	839
City of Largo	15,383	2,388	City of Tavares	7,183	846
City of Longwood	5,578	599	City of Titusville	18,555	1,263
City of Madeira Beach	1,655	131	City of Umatilla	1,536	197
City of Margate	12,828	1,074	City of West Melbourne	9,897	889
City of Mascotte	2,536	57	City of West Miami	1,850	200
City of Melbourne	28,617	4,198	City of West Palm Beach	24,831	2,859
City of Miami	69,695	10,632	City of Wilton Manors	3,692	387
City of Miami Gardens	23,404	6,933	City of Winter Garden	15,288	780
City of Miami Springs	3,705	602	City of Winter Haven	19,350	2,297
City of Minneola	5,670	2,268	City of Winter Park	9,300	1,156
City of Mulberry	1,859	284	Hillsborough County	285,365	10,397
City of Naples	15,630	2,607	Leon County	35,288	1,202
City of New Port Richey	6,539	802	Marion County	225,242	3,422
City of New Smyrna Beach	18,025	1,523	Miami-Dade County	268,400	14,300
City of Niceville	7,013	584	Pasco County	178,575	8,600
City of North Lauderdale	10,468	209	Pinellas County	118,701	4,233
City of North Miami	10,141	1,073	Polk County	274,646	18,822
City of Oakland Park	6,984	4,670	Sarasota County	178,764	6,106
City of Ocala	26,615	4,685	Town of Belleair	1,413	22
City of Ocoee	16,272	704	Town of Cutler Bay	14,207	534
City of Oldsmar	4,689	417	Town of Jupiter	22,355	1,029
City of Orange City	3,138	569	Town of Lantana	3,053	596
City of Orlando	82,259	8,120	Town of Malabar	2,072	218
City of Ormond Beach	16,893	909	Town of Pembroke Park	766	174
City of Palm Bay	74,309	1,329	Town of Redington Shores	1,055	33
City of Palm Coast	31,003	376	Town of Surfside	4,200	1,200
City of Pensacola	20,660	3,512	Village of Indian Creek	42	1
City of Pinellas Park	13,237	6,647	Village of Key Biscayne	1,528	NR
City of Pompano Beach	20,727	2,547	Village of Palm Springs	9,212	501
City of Port Richey	1,286	236	Village of Wellington	17,766	420
City of Port St. Lucie	95,295	2,283	Volusia County	47,162	3,318
City of Riviera Beach	10,693	1,085			

# NAVIGATING THE WATERS WITH YOU...

---

Alternative Funding Solutions  
Stormwater Management  
Contract Management  
Grants Compliance  
Regulatory Compliance: State, Federal, Local



**GOVERNMENT SERVICES GROUP, INC.**

An Anser Advisory Company

[WeServeGovernments.com](http://WeServeGovernments.com)

**David G. Jahosky**

Vice President, Managing Director Government  
and Community Services Divisions

866.896.4747

# Utility Fees and Rates

Our reason is **water.**<sup>TM</sup>



**Advanced Drainage Systems provides water management solutions. As a local employer, we've been supplying central Florida for more than 20 years.**

As an industry leader in sustainable business practices, we're proud to be the second largest plastic recycling company in North America.

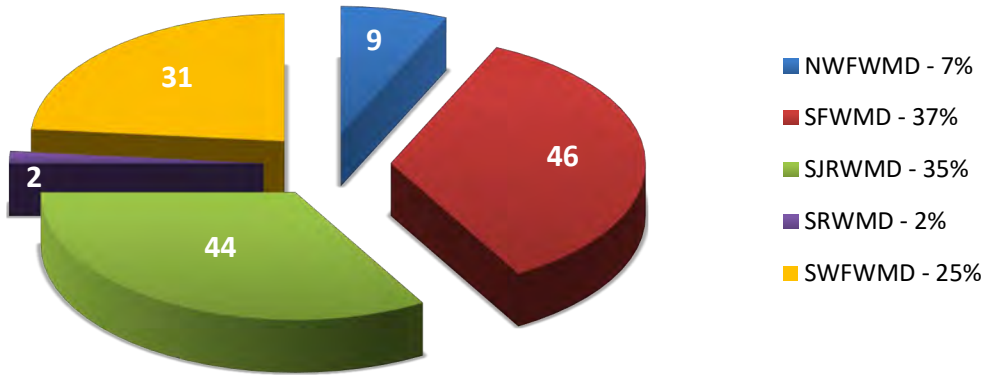
Learn more about how we're protecting water, a precious natural resource, at [sustainability.ads-pipe.com](https://sustainability.ads-pipe.com).

[ads-pipe.com](https://ads-pipe.com)  
800-821-6710

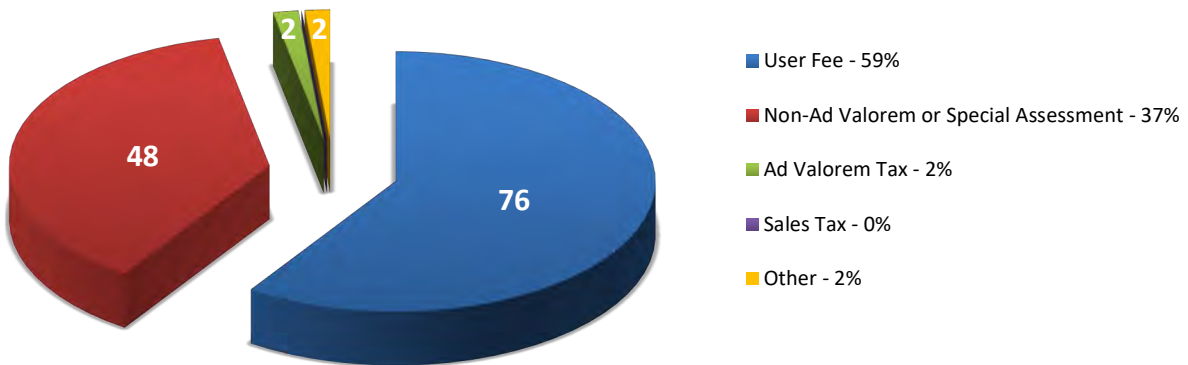




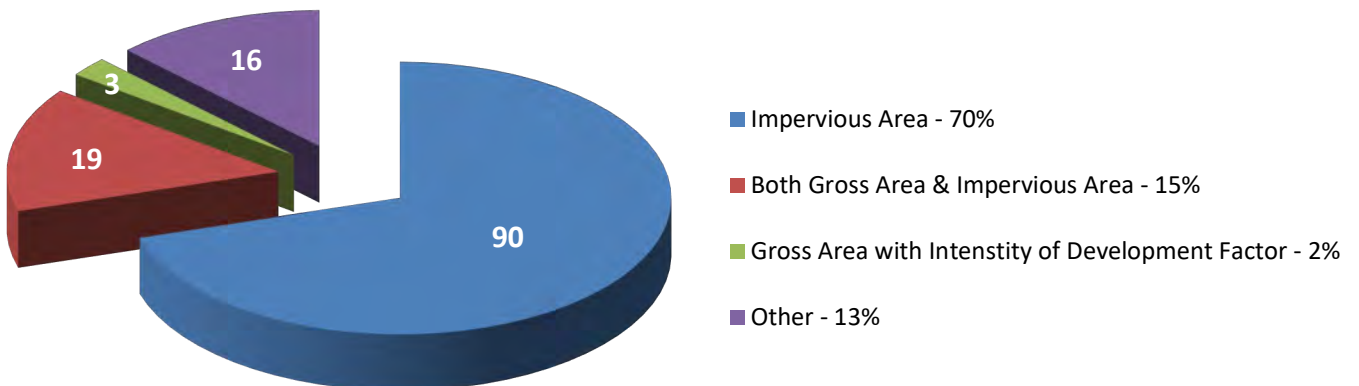
**2-1** Within which Water Management District is your SWU located?  
(multiple responses accepted)



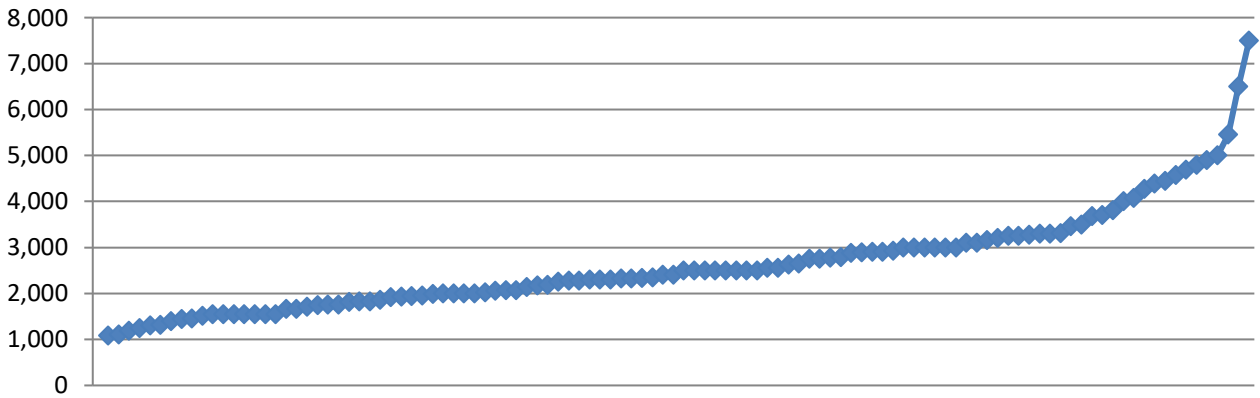
**2-2** What is the basic methodology used for your revenue generation?



**2-3** What is the general basis for your fee?

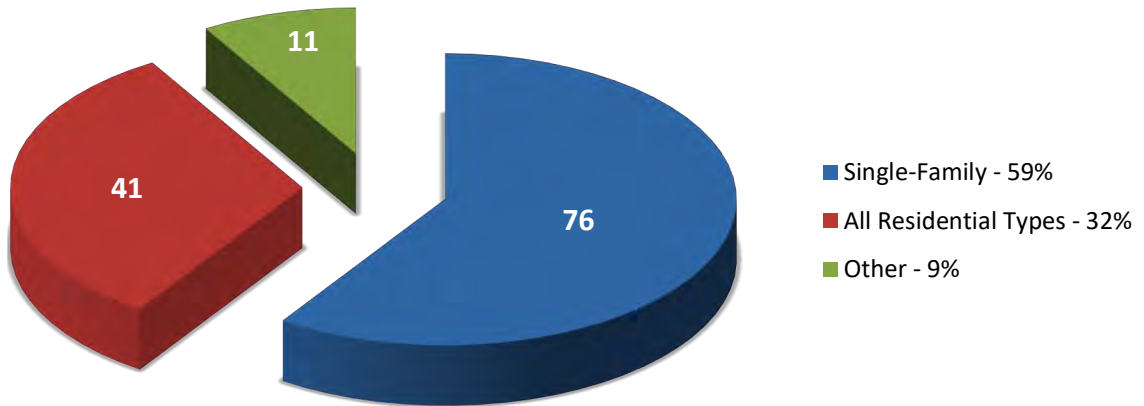


**2-4** If impervious area is the fee basis, what is the square footage of your average billing unit (ERU or similar designation)?



Average is 2,643 square feet (average in 2020 was 2,579).

**2-5** Is the “average billing unit” based upon single-family units only or on all residential types (e.g. single and multi-family, condominiums, mobile homes, etc.)?



## 2-6 What is your current SWU rate per month?

Average rate is \$8.05 (2020 was \$7.84)

Utility Rate Range: \$0.75 (Low) \$60.00 (High)

NR = No Response

Jurisdiction	Rate	Unit Size
Alachua County	\$3.33	4,011
Bay County	\$3.33	NR
Brevard County	\$5.33	2,500
City of Altamonte Springs	\$6.75	2,492
City of Auburndale	\$0.75	NR
City of Aventura	\$3.50	1,549
City of Bradenton Beach	\$4.40	NR
City of Callaway	\$1.00	NR
City of Cape Canaveral	\$10.00	2,074
City of Cape Coral	\$10.83	3,296
City of Casselberry	\$9.20	2,304
City of Clearwater	\$13.40	1,830
City of Clermont	\$4.99	2,000
City of Cocoa	\$10.51	3,100
City of Cocoa Beach	\$8.96	2,900
City of Coconut Creek	\$4.15	2,070
City of Cooper City	\$5.58	1,750
City of Coral Gables	\$19.07	2,346
City of Daytona Beach	\$11.46	1,661
City of DeBary	\$14.00	2,560
City of Deerfield Beach	\$3.75	2,788
City of DeLand	\$9.67	4,900
City of Delray Beach	\$5.33	2,502
City of Doral	\$4.00	1,548
City of Dunedin	\$12.25	1,708
City of Edgewater	\$13.00	2,027
City of Eustis	\$6.00	NR
City of Fernandina Beach	\$12.00	NR
City of Fort Lauderdale	\$21.52	NR
City of Fort Meade	\$7.44	2,750
City of Fort Myers	\$9.60	2,500
City of Fort Pierce	\$5.75	2,186

Jurisdiction	Rate	Unit Size
City of Fort Walton Beach	\$5.00	3,200
City of Fruitland Park	\$2.00	NR
City of Gainesville	\$10.40	2,300
City of Green Cove Springs	\$3.50	3,000
City of Gulf Breeze	\$9.38	4,450
City of Gulfport	\$3.95	2,300
City of Hialeah	\$2.50	1,664
City of Homestead	\$3.37	2,000
City of Indian Harbour Beach	\$4.00	2,500
City of Jacksonville	\$5.00	3,100
City of Key Colony Beach	\$60.00	NR
City of Key West	\$9.25	1,440
City of Kissimmee	\$9.10	2,404
City of Lake Alfred	\$2.00	NR
City of Lake Mary	\$4.00	4,576
City of Lake Worth Beach	\$6.52	1,748
City of Lakeland	\$9.26	5,000
City of Largo	\$8.91	2,257
City of Longwood	\$6.00	2,898
City of Madeira Beach	\$10.00	1,249
City of Marathon	\$20.00	4,796
City of Margate	\$8.25	2,328
City of Mascotte	\$7.00	3,000
City of Melbourne	\$3.67	2,500
City of Miami	\$3.50	1,191
City of Miami Gardens	\$6.00	1,548
City of Miami Springs	\$6.00	NR
City of Minneola	\$4.00	1,100
City of Mulberry	\$4.00	3,250
City of Naples	\$14.50	1,934
City of New Port Richey	\$6.67	2,629
City of New Smyrna Beach	\$7.92	1,818

2-6 What is your current SWU rate per month? (continued)

Average rate is \$8.05 (2020 was \$7.84)

Utility Rate Range: \$0.75 (Low) \$60.00 (High)

NR = No Response

Jurisdiction	Rate	Unit Size	Jurisdiction	Rate	Unit Size
City of Niceville	\$4.51	7,500	City of Tavares	\$10.00	3,500
City of North Lauderdale	\$6.00	2,138	City of Titusville	\$7.64	3,300
City of North Miami	\$7.12	1,760	City of Umatilla	\$4.00	3,000
City of Oakland Park	\$7.00	1,507	City of West Melbourne	\$4.33	2,500
City of Ocala	\$5.54	1,948	City of West Miami	\$2.50	1,400
City of Ocoee	\$8.25	2,054	City of West Palm Beach	\$14.83	2,171
City of Oldsmar	\$6.00	2,550	City of Wilton Manors	\$6.46	3,460
City of Orange City	\$14.67	NR	City of Winter Garden	\$8.25	4,077
City of Orlando	\$9.99	2,000	City of Winter Haven	\$7.46	NR
City of Ormond Beach	\$7.00	3,000	City of Winter Park	\$11.56	2,324
City of Palm Bay	\$12.34	4,693	Hillsborough County	\$6.40	4,267
City of Palm Coast	\$11.65	3,682	Leon County	\$7.08	3,272
City of Pensacola	\$6.34	2,998	Marion County	\$1.25	2,275
City of Pinellas Park	\$5.78	2,000	Miami-Dade County	\$5.00	1,548
City of Pompano Beach	\$5.52	2,880	Pasco County	\$7.92	2,890
City of Port Richey	\$3.00	3,250	Pinellas County	\$9.81	2,339
City of Port St. Lucie	\$14.00	2,280	Sarasota County	\$7.55	3,153
City of Riviera Beach	\$9.00	1,920	Town of Belleair	\$11.92	5,459
City of Rockledge	\$5.00	2,922	Town of Cutler Bay	\$4.00	1,548
City of Safety Harbor	\$10.93	1,865	Town of Jupiter	\$6.17	2,651
City of Satellite Beach	\$16.67	3,000	Town of Malabar	\$5.33	6,500
City of St. Augustine	\$9.00	2,752	Town of Melbourne Beach	\$3.00	2,500
City of St. Pete Beach	\$15.31	3,813	Town of Pembroke Park	\$10.12	1,548
City of St. Petersburg	\$9.93	2,406	Town of Redington Shores	\$1.50	1,312
City of Stuart	\$4.35	3,707	Town of Surfside	\$5.35	1,300
City of Sunny Isles Beach	\$4.33	1,548	Village of Indian Creek	\$4.39	4,385
City of Sweetwater	\$5.00	1,458	Village of Key Biscayne	\$16.90	1,083
City of Tallahassee	\$8.83	1,990	Village of Palm Springs	\$4.00	NR
City of Tamarac	\$11.85	1,830	Village of Wellington	\$19.17	NR
City of Tampa	\$6.83	3,310	Volusia County	\$6.00	2,775
City of Tarpon Springs	\$8.65	1,945			

**2-6 Comparative Monthly Stormwater Rates Based on Standardized Billing Area**

Standardizing the billing area to 1,000 square feet gives the average for 2022 of \$3.30 (2020 was \$3.35).  
 Range of rate per 1,000 square feet: \$0.55(Low) \$15.60(High)

Jurisdiction	Rate/1000 Sq. Ft.
Alachua County	\$0.83
Brevard County	\$2.13
City of Altamonte Springs	\$2.71
City of Aventura	\$2.26
City of Cape Canaveral	\$4.82
City of Cape Coral	\$3.29
City of Casselberry	\$3.99
City of Clearwater	\$7.32
City of Clermont	\$2.50
City of Cocoa	\$3.39
City of Cocoa Beach	\$3.09
City of Coconut Creek	\$2.00
City of Cooper City	\$3.19
City of Coral Gables	\$8.13
City of Daytona Beach	\$6.90
City of DeBary	\$5.47
City of Deerfield Beach	\$1.35
City of DeLand	\$1.97
City of Delray Beach	\$2.13
City of Doral	\$2.58
City of Dunedin	\$7.17
City of Edgewater	\$6.41
City of Fort Meade	\$2.71
City of Fort Myers	\$3.84
City of Fort Pierce	\$2.63
City of Fort Walton Beach	\$1.56
City of Gainesville	\$4.52
City of Green Cove Springs	\$1.17

Jurisdiction	Rate/1000 Sq. Ft.
City of Gulf Breeze	\$2.11
City of Gulfport	\$1.72
City of Hialeah	\$1.50
City of Homestead	\$1.69
City of Indian Harbour Beach	\$1.60
City of Jacksonville	\$1.61
City of Key West	\$6.42
City of Kissimmee	\$3.79
City of Lake Mary	\$0.87
City of Lake Worth Beach	\$3.73
City of Lakeland	\$1.85
City of Largo	\$3.95
City of Longwood	\$2.07
City of Madeira Beach	\$8.01
City of Marathon	\$4.17
City of Margate	\$3.54
City of Mascotte	\$2.33
City of Melbourne	\$1.47
City of Miami	\$2.94
City of Miami Gardens	\$3.88
City of Minneola	\$3.64
City of Mulberry	\$1.23
City of Naples	\$7.50
City of New Port Richey	\$2.54
City of New Smyrna Beach	\$4.36
City of Niceville	\$0.60
City of North Lauderdale	\$2.81
City of North Miami	\$4.05

**2-6 Comparative Monthly Stormwater Rates Based on Standardized Billing Area (continued)**

Standardizing the billing area to 1,000 square feet gives the average for 2022 of \$3.30 (2020 was \$3.35).  
 Range of rate per 1,000 square feet: \$0.55(Low) \$15.60(High)

Jurisdiction	Rate/1000 Sq. Ft.
City of Oakland Park	\$4.64
City of Ocala	\$2.84
City of Ocoee	\$4.02
City of Oldsmar	\$2.35
City of Orlando	\$5.00
City of Ormond Beach	\$2.33
City of Palm Bay	\$2.63
City of Palm Coast	\$3.16
City of Pensacola	\$2.11
City of Pinellas Park	\$2.89
City of Pompano Beach	\$1.92
City of Port Richey	\$0.92
City of Port St. Lucie	\$6.14
City of Riviera Beach	\$4.69
City of Rockledge	\$1.71
City of Safety Harbor	\$5.86
City of Satellite Beach	\$5.56
City of St. Augustine	\$3.27
City of St. Pete Beach	\$4.02
City of St. Petersburg	\$4.13
City of Stuart	\$1.17
City of Sunny Isles Beach	\$2.80
City of Sweetwater	\$3.43
City of Tallahassee	\$4.44
City of Tamarac	\$6.48
City of Tampa	\$2.06
City of Tarpon Springs	\$4.45

Jurisdiction	Rate/1000 Sq. Ft.
City of Tavares	\$2.86
City of Titusville	\$2.32
City of Umatilla	\$1.33
City of West Melbourne	\$1.73
City of West Miami	\$1.79
City of West Palm Beach	\$6.83
City of Wilton Manors	\$1.87
City of Winter Garden	\$2.02
City of Winter Park	\$4.97
Hillsborough County	\$1.50
Leon County	\$2.16
Marion County	\$0.55
Miami-Dade County	\$3.23
Pasco County	\$2.74
Pinellas County	\$4.19
Sarasota County	\$2.39
Town of Belleair	\$2.18
Town of Cutler Bay	\$2.58
Town of Jupiter	\$2.33
Town of Malabar	\$0.82
Town of Melbourne Beach	\$1.20
Town of Pembroke Park	\$6.54
Town of Redington Shores	\$1.14
Town of Surfside	\$4.12
Village of Indian Creek	\$1.00
Village of Key Biscayne	\$15.60
Volusia County	\$2.16

**2-6 Comparative Monthly Stormwater Rates**

Averages													
1997	1999	2001	2003	2005	2007	2009	2011	2014	2016	2018	2020	2022	Change
\$3.37	\$3.18	\$3.36	\$3.52	\$3.85	\$4.29	\$4.88	\$5.22	\$5.67	\$6.53	\$6.97	\$7.50	\$8.05	\$0.55

Jurisdiction	2001	2003	2005	2007	2009	2011	2014	2016	2018	2020	2022	Change
Alachua County										\$3.33	\$3.33	\$0.00
Bay County				\$3.33	\$3.33			\$3.33	\$3.33	\$3.33	\$3.33	\$0.00
Brevard County	\$3.00	\$3.00	\$3.00		\$3.00	\$3.33	\$3.00	\$4.33	\$5.33	\$5.33	\$5.33	\$0.00
Charlotte County	\$3.00			\$3.00		\$10.71	\$10.71	\$10.71	\$10.71			
City of Altamonte Springs	\$4.75	\$4.75		\$5.75	\$6.75	\$6.75	\$6.75	\$6.75	\$6.75	\$6.75	\$6.75	\$0.00
City of Atlantic Beach	\$3.00	\$4.00	\$4.00	\$4.00	\$5.00	\$5.00	\$8.39	\$8.39				
City of Auburndale	\$0.50	\$0.50	\$0.75	\$0.75	\$0.75	\$0.75	\$0.75	\$0.75	\$0.75	\$0.75	\$0.75	\$0.00
City of Aventura		\$2.50	\$2.50	\$2.50		\$2.50				\$3.50	\$3.50	\$0.00
City of Boca Raton								\$3.22				
City of Boynton Beach	\$6.00		\$5.00	\$5.00				\$5.00				
City of Bradenton		\$2.50						\$4.50				
City of Bradenton Beach				\$8.33	\$8.33	\$8.33	\$8.33	\$4.40	\$4.40	\$4.40	\$4.40	\$0.00
City of Callaway								\$1.00	\$1.00	\$1.00	\$1.00	\$0.00
City of Cape Canaveral				\$3.00	\$3.00	\$3.00	\$5.00	\$5.00	\$7.00	\$9.00	\$10.00	\$1.00
City of Cape Coral	\$3.00	\$3.00	\$3.50	\$6.25	\$6.25	\$6.25	\$6.25		\$9.25	\$9.92	\$10.83	\$0.91
City of Casselberry				\$2.90		\$7.00	\$7.00	\$7.00	\$7.00	\$8.65	\$9.20	\$0.55
City of Clearwater	\$4.22	\$7.16	\$8.65	\$9.91	\$11.13	\$12.51	\$13.77	\$14.33	\$14.58	\$13.40	\$13.40	\$0.00
City of Clermont				\$3.00		\$3.00	\$3.00	\$3.00	\$3.00	\$4.99	\$4.99	\$0.00
City of Cocoa	\$2.00	\$3.00	\$3.00			\$5.00	\$5.75	\$6.25	\$6.75		\$10.51	
City of Cocoa Beach	\$2.75	\$5.00	\$5.00	\$6.00	\$6.00	\$6.00	\$6.00	\$8.00	\$8.50	\$8.96	\$8.96	\$0.00
City of Coconut Creek							\$3.46	\$3.54	\$3.71	\$3.92	\$4.15	\$0.23
City of Cooper City								\$2.93	\$2.93	\$3.22	\$5.58	\$2.36
City of Coral Gables							\$8.20	\$8.80	\$13.30	\$16.16	\$19.07	\$2.91
City of Daytona Beach	\$2.71	\$2.71	\$4.00	\$6.00		\$7.48	\$8.67	\$9.38	\$10.07	\$10.07	\$11.46	\$1.39
City of DeBary				\$7.00	\$7.00		\$7.00	\$7.00	\$7.00	\$7.00	\$14.00	\$7.00
City of Deerfield Beach										\$3.75	\$3.75	\$0.00
City of DeLand	\$3.60	\$5.81							\$8.69	\$8.69	\$9.67	\$0.98
City of Delray Beach	\$4.50	\$4.50	\$4.50	\$5.33	\$5.33	\$5.33	\$5.33	\$5.33		\$5.33	\$5.33	\$0.00
City of Deltona	\$2.50	\$2.50	\$5.00									
City of Doral					\$4.00	\$4.00	\$4.00	\$4.00	\$4.00	\$4.00	\$4.00	\$0.00
City of Dunedin	\$3.00	\$3.00	\$4.50	\$6.00	\$6.00	\$7.40		\$10.16	\$11.10	\$11.89	\$12.25	\$0.36
City of Eagle Lake							\$4.00					
City of Edgewater	\$6.00	\$6.00	\$6.00	\$6.00	\$7.00	\$8.00	\$8.00	\$9.00	\$10.00	\$11.00	\$13.00	\$2.00
City of Eustis		\$3.00								\$6.00	\$6.00	\$0.00
City of Fernandina Beach								\$4.00	\$12.00	\$12.00	\$12.00	\$0.00
City of Flagler Beach								\$5.00	\$6.25	\$6.25		
City of Fort Lauderdale	\$2.24	\$2.35	\$2.62	\$2.90	\$3.20	\$3.53	\$3.50	\$4.10	\$10.00	\$14.00	\$21.52	\$7.52
City of Fort Meade		\$4.25	\$4.25	\$4.25	\$4.25	\$4.25	\$4.25	\$6.19	\$6.75	\$7.44	\$7.44	\$0.00
City of Fort Myers					\$4.80	\$4.80	\$4.80	\$4.80	\$7.60	\$9.60	\$9.60	\$0.00
City of Fort Pierce	\$1.50	\$2.50	\$2.50	\$4.50	\$4.50	\$4.50	\$4.50	\$4.50	\$4.50	\$5.75	\$5.75	\$0.00
City of Fort Walton Beach						\$3.00	\$3.00	\$4.25	\$4.75	\$5.00	\$5.00	\$0.00
City of Fruitland Park					\$1.00	\$2.00		\$2.00	\$2.00	\$2.00	\$2.00	\$0.00

**2-6 Comparative Monthly Stormwater Rates (continued)**

Jurisdiction	2001	2003	2005	2007	2009	2011	2014	2016	2018	2020	2022	Change
City of Gainesville	\$5.75	\$6.25	\$6.50	\$6.95	\$7.65	\$8.15	\$8.56	\$9.00	\$9.45	\$9.90	\$10.40	\$0.50
City of Green Cove Springs								\$3.50	\$3.50	\$3.50	\$3.50	\$0.00
City of Gulf Breeze									\$5.07	\$9.38	\$9.38	\$0.00
City of Gulfport				\$2.87	\$2.87	\$2.87	\$3.21	\$3.60	\$3.95	\$3.95	\$3.95	\$0.00
City of Haines City			\$2.00		\$2.00		\$4.52	\$4.52	\$4.93	\$4.94		
City of Hallandale Beach	\$1.42	\$1.42	\$2.17	\$2.68	\$2.68	\$2.50	\$3.35	\$3.35	\$7.37			
City of Hialeah	\$2.50	\$2.50	\$2.50	\$2.50	\$2.50	\$2.50		\$2.50	\$2.50	\$2.50	\$2.50	\$0.00
City of Holly Hill	\$2.50	\$3.00	\$3.00	\$3.00	\$6.00		\$6.00					
City of Hollywood			\$2.35	\$2.69		\$3.22						
City of Homestead	\$2.00	\$3.06	\$3.18			\$3.18		\$3.37	\$3.37	\$3.37	\$3.37	\$0.00
City of Indian Harbour Beach								\$4.00	\$4.00	\$4.00	\$4.00	\$0.00
City of Jacksonville						\$5.00	\$5.00	\$5.00	\$5.00	\$5.00	\$5.00	\$0.00
City of Jacksonville Beach	\$5.00	\$5.00	\$5.00	\$5.00	\$5.00		\$4.78	\$5.00	\$5.00	\$5.00		
City of Key Colony Beach								\$60.00	\$60.00	\$60.00	\$60.00	\$0.00
City of Key West							\$7.90	\$8.22	\$8.72	\$8.98	\$9.25	\$0.27
City of Kissimmee						\$7.38	\$8.08	\$8.08	\$8.45	\$8.78	\$9.10	\$0.32
City of Lake Alfred							\$2.00	\$2.00	\$2.00	\$2.00	\$2.00	\$0.00
City of Lake Mary			\$3.00	\$3.00	\$3.00	\$3.00		\$4.00	\$4.00	\$4.00	\$4.00	\$0.00
City of Lake Worth Beach	\$2.25	\$2.25	\$2.90	\$5.80		\$5.80	\$6.30		\$6.30	\$6.52	\$6.52	\$0.00
City of Lakeland	\$2.00	\$2.00	\$2.00	\$2.00	\$6.00	\$6.00	\$6.00	\$6.00	\$8.00	\$8.82	\$9.26	\$0.44
City of Largo	\$2.80	\$3.10	\$3.57	\$3.57	\$3.57	\$4.45		\$6.65	\$6.65	\$6.65	\$8.91	\$2.26
City of Lauderhill						\$12.19						
City of Leesburg	\$3.00	\$3.00				\$6.00	\$6.00	\$5.50	\$5.50	\$5.50		
City of Longwood	\$3.00			\$6.00	\$6.00	\$6.00		\$6.00	\$6.00	\$6.00	\$6.00	\$0.00
City of Madeira Beach				\$5.00	\$5.00				\$10.00	\$10.00	\$10.00	\$0.00
City of Maitland							\$8.60	\$9.80	\$9.60			
City of Marathon											\$20.00	
City of Margate	\$2.30		\$2.69	\$2.69	\$3.57			\$5.15	\$5.15	\$8.25	\$8.25	\$0.00
City of Mascotte										\$7.00	\$7.00	\$0.00
City of Melbourne							\$3.00	\$3.67	\$3.67	\$3.67	\$3.67	\$0.00
City of Miami		\$3.50		\$3.50	\$3.50			\$3.50	\$3.50	\$3.50	\$3.50	\$0.00
City of Miami Gardens					\$4.00	\$4.00	\$4.00	\$4.00	\$6.00	\$6.00	\$6.00	\$0.00
City of Miami Springs				\$3.67			\$3.67	\$3.67	\$6.00	\$6.00	\$6.00	\$0.00
City of Minneola				\$2.00	\$4.00			\$4.00	\$4.00	\$4.00	\$4.00	\$0.00
City of Miramar	\$2.00	\$2.00	\$2.00	\$2.50								
City of Mount Dora					\$5.00		\$6.50					
City of Mulberry					\$4.00	\$4.00	\$4.00		\$4.00	\$4.00	\$4.00	\$0.00
City of Naples			\$4.00	\$4.00	\$11.82	\$12.01	\$12.80	\$13.05	\$13.35	\$13.93	\$14.50	\$0.57
City of Neptune Beach			\$3.00	\$3.00	\$3.00		\$3.00	\$5.00	\$5.00	\$18.41		
City of New Port Richey		\$3.36	\$3.36	\$3.36	\$3.36	\$3.36		\$3.36	\$6.50	\$6.67	\$6.67	\$0.00
City of New Smyrna Beach								\$7.17	\$7.33	\$7.67	\$7.92	\$0.25
City of Niceville			\$2.65	\$2.65	\$3.85	\$4.25	\$4.51	\$4.51	\$4.51	\$4.51	\$4.51	\$0.00
City of North Bay Village								\$1.26	\$7.72			
City of North Lauderdale	\$2.50	\$2.50	\$3.00	\$3.00	\$3.00		\$3.00	\$3.00	\$6.00	\$6.00	\$6.00	\$0.00
City of North Miami	\$2.10	\$2.10	\$4.65	\$4.65	\$5.64			\$6.19	\$6.19	\$6.19	\$7.12	\$0.93
City of North Miami Beach	\$3.70	\$3.70	\$3.70	\$4.50		\$4.50	\$4.50					\$0.00



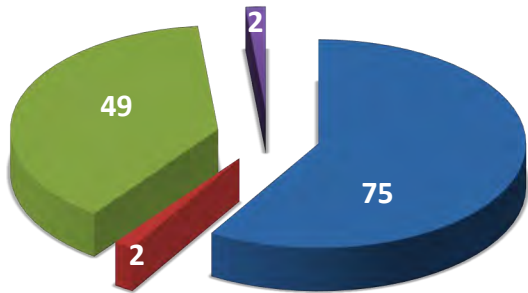
**2-6 Comparative Monthly Stormwater Rates (continued)**

Jurisdiction	2001	2003	2005	2007	2009	2011	2014	2016	2018	2020	2022	Change
City of Oakland Park		\$3.00	\$3.99	\$6.00	\$6.00	\$6.00	\$6.00	\$7.00	\$7.00	\$7.00	\$7.00	\$0.00
City of Ocala	\$3.00	\$3.00	\$3.00	\$4.00	\$4.00	\$4.00		\$4.00	\$4.71	\$5.54	\$5.54	\$0.00
City of Ocoee	\$5.00	\$5.00	\$5.00	\$5.00		\$7.00			\$8.25	\$8.25	\$8.25	\$0.00
City of Oldsmar	\$2.50	\$2.50	\$3.50	\$3.00	\$3.00		\$4.00	\$5.00	\$5.00	\$6.00	\$6.00	\$0.00
City of Orange City									\$12.55	\$12.55	\$14.67	\$2.12
City of Orlando	\$5.50	\$5.50	\$6.88	\$9.08	\$9.99	\$9.99	\$9.99	\$9.99	\$9.99	\$9.99	\$9.99	\$0.00
City of Ormond Beach							\$8.00	\$8.00	\$8.00	\$7.00	\$7.00	\$0.00
City of Oviedo	\$4.00	\$4.00	\$4.00		\$4.00		\$4.00					
City of Palm Bay								\$4.47	\$13.76	\$12.34	\$12.34	\$0.00
City of Palm Coast				\$6.00	\$8.00	\$8.00	\$11.65	\$11.65	\$11.65	\$11.65	\$11.65	\$0.00
City of Pensacola			\$4.40	\$4.40	\$4.40	\$4.40	\$5.07	\$5.28	\$5.28	\$5.28	\$6.34	\$1.06
City of Pinellas Park					\$5.50				\$4.00	\$4.00	\$5.78	\$1.78
City of Plant City								\$4.00				
City of Plantation										\$2.50		
City of Pompano Beach		\$3.00	\$3.00	\$3.00	\$3.00		\$3.21	\$3.68	\$4.21	\$4.50	\$5.52	\$1.02
City of Port Orange	\$6.00	\$6.00	\$6.25	\$6.25	\$8.25							
City of Port Richey									\$3.00		\$3.00	
City of Port St. Lucie	\$8.33	\$8.75	\$8.75	\$10.25	\$10.25			\$12.75	\$13.58	\$13.58	\$14.00	\$0.42
City of Riviera Beach			\$4.50	\$4.50			\$4.50	\$9.00			\$9.00	
City of Rockledge			\$3.00	\$3.00	\$3.75	\$3.75	\$3.75	\$4.25	\$4.25	\$5.00	\$5.00	\$0.00
City of Safety Harbor				\$3.50	\$3.75	\$3.75	\$7.25	\$7.25	\$7.25	\$10.61	\$10.93	\$0.32
City of Sanford	\$4.00	\$4.00	\$5.20		\$5.60	\$6.79		\$8.25				
City of Satellite Beach	\$3.00	\$3.00		\$3.50	\$4.50			\$8.67	\$8.67	\$16.67	\$16.67	\$0.00
City of Sebastian								\$5.00	\$5.00	\$10.00		
City of St. Augustine	\$5.00	\$5.00	\$5.00	\$5.00	\$5.00		\$7.00		\$7.00	\$7.00	\$9.00	\$2.00
City of St. Cloud					\$6.35				\$6.35	\$6.35		
City of St. Pete Beach							\$3.92	\$3.92	\$3.92	\$3.92	\$15.31	\$11.39
City of St. Petersburg	\$4.50	\$5.00	\$6.00	\$6.40	\$6.85	\$6.84	\$6.84	\$6.84	\$10.00	\$9.93	\$9.93	\$0.00
City of Stuart		\$2.65	\$2.65	\$3.76	\$3.76	\$3.76	\$3.95	\$3.95	\$4.18	\$4.35	\$4.35	\$0.00
City of Sunny Isles Beach		\$2.50	\$2.50	\$2.50		\$2.50			\$4.33	\$4.33	\$4.33	\$0.00
City of Sunrise	\$1.30	\$1.30	\$1.30	\$2.32	\$3.25	\$4.50	\$6.82		\$8.09			
City of Sweetwater								\$4.00	\$5.00	\$5.00	\$5.00	\$0.00
City of Tallahassee	\$6.25	\$6.25	\$6.25	\$6.93	\$7.61	\$7.95	\$7.95	\$7.95	\$8.18	\$8.51	\$8.83	\$0.32
City of Tamarac				\$8.00	\$9.03	\$9.58	\$9.19	\$9.19	\$9.57	\$9.86	\$11.85	\$1.99
City of Tampa				\$3.00	\$3.00	\$3.00	\$3.00	\$6.83	\$6.83	\$6.83	\$6.83	\$0.00
City of Tarpon Springs			\$5.65		\$5.65	\$5.65	\$5.65		\$7.15	\$8.15	\$8.65	\$0.50
City of Tavares			\$3.00			\$4.50	\$4.50	\$7.75	\$9.25	\$10.00	\$10.00	\$0.00
City of Titusville	\$3.71	\$4.15	\$5.30	\$5.57	\$5.85	\$6.15	\$6.62	\$6.96	\$7.31	\$7.64	\$7.64	\$0.00
City of Umatilla								\$4.00	\$4.00	\$4.00	\$4.00	\$0.00
City of Venice	\$2.98	\$2.98	\$2.98	\$5.00	\$5.00							
City of West Melbourne								\$3.00	\$3.00	\$4.33	\$4.33	\$0.00
City of West Miami				\$2.50	\$2.50	\$2.50		\$2.50	\$2.50		\$2.50	
City of West Palm Beach	\$3.40	\$3.40	\$6.04	\$6.95	\$8.48			\$10.62	\$13.57	\$13.57	\$14.83	\$1.26
City of Wilton Manors	\$3.00	\$3.00	\$3.50	\$3.50	\$3.50	\$3.50	\$4.37	\$4.37	\$5.31	\$5.31	\$6.46	\$1.15
City of Winter Garden	\$4.00			\$4.00					\$5.13	\$5.13	\$8.25	\$3.12
City of Winter Haven				\$2.68			\$3.16	\$3.16	\$6.81	\$7.11	\$7.46	\$0.35

**2-6 Comparative Monthly Stormwater Rates (continued)**

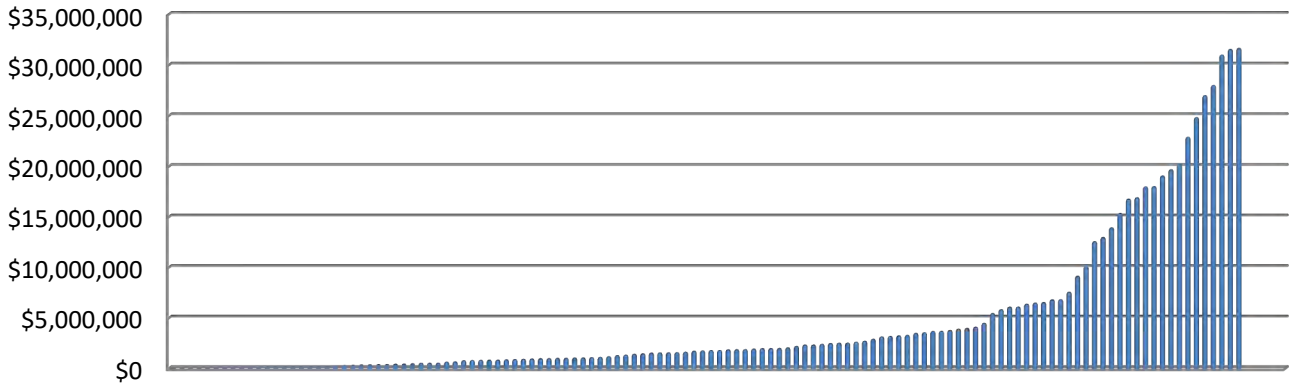
Jurisdiction	2001	2003	2005	2007	2009	2011	2014	2016	2018	2020	2022	Change
City of Winter Park					\$9.78	\$11.56	\$11.56	\$11.56	\$11.56	\$11.56	\$11.56	\$0.00
City of Winter Springs	\$2.04	\$3.25	\$3.25	\$5.50	\$5.50	\$5.50	\$5.50	\$5.50	\$5.50			
Hillsborough County	\$1.00	\$1.00	\$1.00	\$1.00	\$1.00	\$1.00	\$1.00	\$2.50	\$3.00	\$6.40	\$6.40	\$0.00
Lake County (in mils)				.4984	.4984	.4984	.4984	.4984	.4984	.4984		
Leon County	\$1.67	\$1.67	\$1.67	\$1.67	\$1.67	\$1.67	\$7.08	\$7.08	\$7.08	\$7.08	\$7.08	\$0.00
Marion County				\$1.25	\$1.25	\$1.25	\$1.25	\$1.25	\$1.25	\$1.25	\$1.25	\$0.00
Miami-Dade County	\$2.50	\$3.00	\$4.00	\$4.00	\$4.00	\$4.00	\$4.00	\$4.00	\$4.00	\$5.00	\$5.00	\$0.00
Pasco County					\$3.82	\$3.92	\$3.92	\$4.75	\$7.92	\$7.92	\$7.92	\$0.00
Pinellas County							\$9.67	\$9.81	\$9.81	\$9.81	\$9.81	\$0.00
Sarasota County	\$6.70	\$6.70	\$6.70	\$7.24	\$7.55	\$7.55		\$7.55	\$7.55	\$7.55	\$7.55	\$0.00
Town of Bay Harbor Islands		\$5.00						\$5.00				
Town of Belleair								\$11.92	\$11.92	\$11.92	\$11.92	\$0.00
Town of Cutler Bay								\$4.00	\$4.00	\$4.00	\$4.00	\$0.00
Town of Jupiter	\$3.51	\$3.68	\$3.85	\$4.10	\$4.37	\$4.37	\$4.37	\$4.55	\$4.98	\$5.70	\$6.17	\$0.47
Town of Malabar			\$3.00		\$3.00			\$3.00	\$4.50	\$4.50	\$5.33	\$0.83
Town of Medley				\$3.00	\$3.00				\$3.00			
Town of Melbourne Beach					\$3.00		\$3.00	\$3.00	\$3.00	\$3.00	\$3.00	\$0.00
Town of Pembroke Park			\$5.50	\$5.67	\$6.25		\$9.00		\$10.12	\$10.12	\$10.12	\$0.00
Town of Redington Shores								\$1.50	\$1.50	\$1.50	\$1.50	\$0.00
Town of Surfside								\$5.35	\$5.35	\$5.35	\$5.35	\$0.00
Village of El Portal		\$3.00										
Village of Indian Creek					\$4.39	\$4.39		\$4.38	\$4.38	\$4.38	\$4.39	\$0.00
Village of Key Biscayne								\$13.35	\$13.35	\$16.90	\$16.90	\$0.00
Village of Miami Shores Village		\$2.67	\$3.00	\$3.25	\$3.75	\$3.75						
Village of Palm Springs								\$3.00	\$4.00	\$4.00	\$4.00	\$0.00
Village of Pinecrest		\$2.00	\$3.00	\$3.00	\$3.00	\$4.00	\$4.00	\$8.00	\$10.00	\$10.00		
Village of Wellington								\$19.17	\$19.17	\$19.17	\$19.17	\$0.00
Volusia County	\$2.50	\$2.50	\$2.50	\$6.00	\$6.00	\$6.00	\$6.00	\$6.00	\$6.00	\$6.00	\$6.00	\$0.00

**2-7 How are the majority of your stormwater charges invoiced?**



- Combined on Monthly Bill for Other Utility Services - 58%
- Separate Mailing - 2%
- Placed on Annual Property Tax Bill - 38%
- Other - 2%

**2-8** What is the total annual revenue generated by the utility fee?



Average revenue generated is \$4,763,151 (2020 was \$4,281,938).

**2-8** Total Annual Revenue Generated by Utility Fee

Jurisdiction	2022 Revenue
Alachua County	\$1,951,246
Bay County	\$1,000,000
Brevard County	\$6,560,026
City of Altamonte Springs	\$2,003,165
City of Auburndale	\$112,816
City of Aventura	\$1,300,000
City of Bradenton Beach	\$309,520
City of Callaway	\$85,000
City of Cape Canaveral	\$1,069,796
City of Cape Coral	\$20,227,445
City of Casselberry	\$2,353,108
City of Clearwater	\$16,925,590
City of Clermont	\$1,800,000
City of Cocoa	\$1,890,701
City of Cocoa Beach	\$881,307
City of Coconut Creek	\$1,762,000
City of Cooper City	\$550,100
City of Coral Gables	\$6,396,266
City of Daytona Beach	\$13,950,498
City of DeBary	\$791,000
City of Deerfield Beach	\$1,800,000
City of DeLand	\$910,000
City of Delray Beach	\$2,210,727
City of Doral	\$3,700,000
City of Dunedin	\$4,120,000
City of Edgewater	\$1,892,121
City of Eustis	\$850,806
City of Fernandina Beach	\$850,000
City of Fort Lauderdale	\$28,000,000
City of Fort Meade	\$192,170

Jurisdiction	2022 Revenue
City of Fort Myers	\$6,500,000
City of Fort Pierce	\$2,542,540
City of Fort Walton Beach	\$970,866
City of Fruitland Park	\$48,000
City of Gainesville	\$9,161,009
City of Green Cove Springs	\$177,400
City of Gulf Breeze	\$460,274
City of Gulfport	\$409,368
City of Hialeah	\$3,300,000
City of Homestead	\$1,876,373
City of Indian Harbour Beach	\$218,293
City of Jacksonville	\$31,561,888
City of Key Colony Beach	\$197,000
City of Key West	\$2,351,456
City of Kissimmee	\$834,527
City of Lake Alfred	\$45,000
City of Lake Mary	\$413,000
City of Lake Worth Beach	\$1,575,000
City of Lakeland	\$7,573,331
City of Largo	\$6,825,000
City of Longwood	\$650,000
City of Madeira Beach	\$375,000
City of Marathon	\$1,037,326
City of Margate	\$2,071,000
City of Mascotte	\$213,000
City of Melbourne	\$2,925,000
City of Miami	\$12,575,573
City of Miami Gardens	\$5,845,253
City of Miami Springs	\$450,000
City of Minneola	\$262,870

**2-8 Total Annual Revenue Generated by Utility Fee (continued)**

Jurisdiction	2022 Revenue
City of Mulberry	\$280,000
City of Naples	\$5,465,100
City of New Port Richey	\$1,068,910
City of New Smyrna Beach	\$2,417,000
City of Niceville	\$500,000
City of North Lauderdale	\$1,193,100
City of North Miami	\$2,624,268
City of Oakland Park	\$3,150,074
City of Ocala	\$6,835,282
City of Ocoee	\$3,918,740
City of Oldsmar	\$942,136
City of Orange City	\$810,620
City of Orlando	\$24,829,798
City of Ormond Beach	\$2,539,966
City of Palm Bay	\$10,157,317
City of Palm Coast	\$12,995,325
City of Pensacola	\$2,000,000
City of Pinellas Park	\$3,258,719
City of Pompano Beach	\$4,000,000
City of Port Richey	\$118,638
City of Port St. Lucie	\$22,893,483
City of Riviera Beach	\$3,200,000
City of Rockledge	\$1,100,432
City of Safety Harbor	\$1,550,000
City of Satellite Beach	\$1,005,000
City of St. Augustine	\$1,128,808
City of St. Pete Beach	\$1,347,700
City of St. Petersburg	\$18,000,000
City of Stuart	\$545,000
City of Sunny Isles Beach	\$1,482,477
City of Tallahassee	\$19,079,490
City of Tamarac	\$6,107,898
City of Tampa	\$16,793,390

Jurisdiction	2022 Revenue
City of Tarpon Springs	\$1,735,314
City of Tavares	\$1,564,010
City of Titusville	\$2,724,028
City of Umatilla	\$99,000
City of West Melbourne	\$680,146
City of West Miami	\$163,161
City of West Palm Beach	\$15,376,467
City of Wilton Manors	\$550,000
City of Winter Garden	\$1,589,244
City of Winter Haven	\$2,014,950
City of Winter Park	\$3,565,000
Hillsborough County	\$31,672,650
Leon County	\$3,684,258
Marion County	\$3,793,235
Miami-Dade County	\$31,000,000
Pasco County	\$27,000,000
Pinellas County	\$19,700,000
Polk County	\$2,500,000
Sarasota County	\$18,037,741
Town of Belleair	\$337,400
Town of Cutler Bay	\$1,030,000
Town of Jupiter	\$3,500,442
Town of Malabar	\$128,780
Town of Melbourne Beach	\$53,000
Town of Pembroke Park	\$1,440,000
Town of Redington Shores	\$45,000
Town of Surfside	\$137,000
Village of Indian Creek	\$182,835
Village of Key Biscayne	\$1,640,490
Village of Palm Springs	\$382,799
Village of Wellington	\$6,100,000
Volusia County	\$4,499,656

**2-8 Comparative Annual Stormwater Revenue**

Jurisdiction	2011	2014	2016	2018	2020	2022	Change
Alachua County					\$1,939,850	\$1,951,246	\$11,396
Bay County			\$1,755,880	\$1,788,920	\$1,777,160	\$1,000,000	(\$777,160)
Brevard County	\$3,306,078	\$3,402,357	\$4,956,903	\$6,194,316	\$6,435,425	\$6,560,026	\$124,601
Charlotte County	\$5,000,000	\$5,000,000	\$5,000,000	\$5,000,000			
City of Altamonte Springs	\$1,915,871	\$1,915,871	\$2,022,364	\$2,058,306	\$2,058,306	\$2,003,165	(\$55,141)
City of Atlantic Beach	\$508,124	\$855,000	\$1,135,000				
City of Auburndale	\$42,966	\$42,966	\$42,966	\$55,287	\$97,150	\$112,816	\$15,666
City of Aventura	\$801,532				\$1,300,000	\$1,300,000	\$0
City of Boca Raton			\$1,800,000				
City of Boynton Beach			\$3,200,000				
City of Bradenton			\$1,847,000				
City of Bradenton Beach	\$129,000	\$147,000	\$298,650	\$298,650	\$309,520	\$309,520	\$0
City of Callaway			\$85,000	\$85,000	\$85,000	\$85,000	\$0
City of Cape Canaveral	\$334,200	\$581,400	\$582,000	\$695,500	\$853,227	\$1,069,796	\$216,569
City of Cape Coral	\$11,912,940	\$12,365,100		\$18,379,336	\$20,227,445	\$20,227,445	\$0
City of Casselberry	\$1,748,000	\$1,679,050	\$1,711,878	\$1,760,500	\$2,161,317	\$2,353,108	\$191,791
City of Clearwater	\$14,905,000	\$16,700,000	\$16,700,000	\$16,700,000	\$16,778,861	\$16,925,590	\$146,729
City of Clermont	\$804,800	\$804,800	\$1,038,627	\$1,038,627	\$1,400,000	\$1,800,000	\$400,000
City of Cocoa	\$520,000	\$520,000	\$1,400,000	\$1,400,000	\$1,890,701	\$1,890,701	\$0
City of Cocoa Beach	\$585,000	\$566,000	\$566,000	\$809,159	\$853,956	\$881,307	\$27,351
City of Coconut Creek		\$1,552,800	\$1,552,800	\$1,670,000	\$1,762,000	\$1,762,000	\$0
City of Cooper City			\$130,000	\$130,000	\$321,285	\$550,100	\$228,815
City of Coral Gables		\$2,900,000	\$3,150,000	\$4,222,000	\$5,540,000	\$6,396,266	\$856,266
City of Daytona Beach	\$5,026,480	\$9,399,000	\$9,399,000	\$11,733,000	\$11,733,000	\$13,950,498	\$2,217,498
City of DeBary		\$791,000	\$791,000	\$791,000	\$791,000	\$791,000	\$0
City of Deerfield Beach					\$1,800,000	\$1,800,000	\$0
City of DeLand				\$800,000	\$910,000	\$910,000	\$0
City of Delray Beach	\$2,200,000	\$2,200,000	\$2,200,000		\$2,210,727	\$2,210,727	\$0
City of Doral	\$3,000,000	\$3,000,000	\$3,000,000	\$3,700,000	\$3,700,000	\$3,700,000	\$0
City of Dunedin	\$2,405,152		\$3,219,581	\$3,720,500	\$4,060,500	\$4,120,000	\$59,500
City of Eagle Lake		\$45,000					
City of Edgewater	\$1,276,032	\$1,276,483	\$1,302,571	\$1,554,152	\$1,892,121	\$1,892,121	\$0
City of Eustis					\$824,450	\$850,806	\$26,356
City of Fernandina Beach			\$250,000	\$780,000	\$825,000	\$850,000	\$25,000
City of Flagler Beach			\$260,000	\$362,401	\$362,401		
City of Fort Lauderdale	\$4,864,000	\$5,197,944	\$7,250,762	\$9,171,567	\$13,800,377	\$28,000,000	\$14,199,623
City of Fort Meade	\$140,000	\$140,000	\$207,485	\$193,841	\$192,170	\$192,170	\$0
City of Fort Myers	\$2,700,000	\$2,860,000	\$3,050,000	\$4,700,000	\$6,500,000	\$6,500,000	\$0
City of Fort Pierce	\$2,500,000	\$2,406,000	\$2,406,000	\$2,542,540	\$2,542,540	\$2,542,540	\$0
City of Fort Walton Beach	\$670,893	\$670,893	\$892,659	\$970,866	\$970,866	\$970,866	\$0
City of Fruitland Park	\$21,000		\$21,000	\$21,000	\$48,000	\$48,000	\$0
City of Gainesville	\$6,609,596	\$6,753,539	\$7,734,911	\$6,802,057	\$6,802,057	\$9,161,009	\$2,358,952

**2-8 Comparative Annual Stormwater Revenue (continued)**

Jurisdiction	2011	2014	2016	2018	2020	2022	Change
City of Green Cove Springs			\$177,400	\$177,400	\$177,400	\$177,400	\$0
City of Gulf Breeze				\$235,000	\$460,274	\$460,274	\$0
City of Gulfport	\$306,510	\$306,510	\$324,089	\$409,368	\$409,368	\$409,368	\$0
City of Haines City	\$190,325	\$500,000	\$500,000	\$500,000	\$520,000		
City of Hallandale Beach	\$1,462,465	\$1,977,760	\$1,977,760	\$1,977,760			
City of Hialeah	\$3,420,800		\$3,600,000	\$3,300,000	\$3,300,000	\$3,300,000	\$0
City of Holly Hill		\$804,000					
City of Hollywood	\$2,400,000						
City of Homestead	\$937,694		\$1,644,744	\$1,832,424	\$1,847,930	\$1,876,373	\$28,443
City of Indian Harbour Beach			\$226,114	\$226,114	\$226,114	\$218,293	(\$7,821)
City of Jacksonville	\$30,000,000	\$30,600,000	\$30,600,000	\$29,584,022	\$31,287,151	\$31,561,888	\$274,737
City of Jacksonville Beach		\$1,209,604	\$1,296,045	\$1,326,178	\$1,402,055		
City of Key Colony Beach			\$197,000	\$197,000	\$197,000	\$197,000	\$0
City of Key West		\$2,100,000	\$2,150,000	\$2,150,000	\$2,150,000	\$2,351,456	\$201,456
City of Kissimmee	\$3,625,000	\$4,020,561	\$4,738,000	\$834,527	\$834,527	\$834,527	\$0
City of Lake Alfred		\$45,000	\$45,000	\$45,000	\$45,000	\$45,000	\$0
City of Lake Mary	\$268,000		\$408,930	\$413,000	\$413,000	\$413,000	\$0
City of Lake Worth	\$2,717,000	\$1,846,304		\$1,846,304	\$1,575,000	\$1,575,000	\$0
City of Lakeland	\$4,320,000	\$4,536,900	\$4,536,900	\$5,425,000	\$5,923,000	\$7,573,331	\$1,650,331
City of Largo	\$3,709,320		\$5,495,000	\$5,789,000	\$5,787,800	\$6,825,000	\$1,037,200
City of Lauderhill	\$5,058,801						
City of Leesburg	\$1,500,000	\$1,400,000	\$1,400,000	\$1,983,211	\$1,983,211		
City of Longwood	\$1,300,000		\$1,300,000	\$1,300,000	\$1,300,000	\$650,000	(\$650,000)
City of Madeira Beach				\$375,000	\$375,000	\$375,000	\$0
City of Marathon						\$1,037,326	
City of Maitland		\$1,141,392	\$1,141,392	\$1,712,000			
City of Margate			\$900,000	\$900,000	\$2,071,000	\$2,071,000	\$0
City of Mascotte					\$160,000	\$213,000	\$53,000
City of Melbourne		\$2,300,000	\$2,700,000	\$2,925,000	\$2,925,000	\$2,925,000	\$0
City of Miami			\$11,424,031	\$11,816,631	\$12,575,573	\$12,575,573	\$0
City of Miami Gardens	\$3,500,000	\$4,000,000	\$4,000,000	\$5,643,765	\$5,643,765	\$5,845,253	\$201,488
City of Miami Springs		\$278,515	\$210,000	\$450,000	\$450,000	\$450,000	\$0
City of Minneola			\$190,800	\$260,893	\$260,893	\$262,870	\$1,977
City of Mount Dora	\$24,760	\$848,843					
City of Mulberry	\$217,885	\$217,885		\$280,000	\$280,000	\$280,000	\$0
City of Naples	\$4,754,978	\$4,754,978	\$4,773,000	\$5,032,252	\$5,063,000	\$5,465,100	\$402,100
City of Neptune Beach		\$173,127	\$280,000	\$280,000	\$280,000		
City of New Port Richey	\$542,119		\$542,119	\$985,987	\$1,084,890	\$1,068,910	(\$15,980)
City of New Smyrna Beach			\$1,800,000	\$2,100,000	\$2,417,000	\$2,417,000	\$0
City of Niceville	\$388,000	\$425,000	\$480,000	\$485,000	\$500,000	\$500,000	\$0
City of North Bay Village			\$112,927	\$116,575			

**2-8 Comparative Annual Stormwater Revenue (continued)**

Jurisdiction	2011	2014	2016	2018	2020	2022	Change
City of North Lauderdale		\$375,000	\$375,000	\$750,000	\$1,193,100	\$1,193,100	\$0
City of North Miami			\$2,448,000	\$2,598,048	\$2,552,977	\$2,624,268	\$71,291
City of North Miami Beach	\$1,280,359	\$1,275,000					
City of Oakland Park	\$2,850,000	\$3,000,000	\$3,000,070	\$3,150,074	\$3,150,074	\$3,150,074	\$0
City of Ocala	\$4,245,131		\$4,803,148	\$5,999,400	\$6,835,282	\$6,835,282	\$0
City of Ocoee	\$3,209,160			\$3,549,174	\$3,549,174	\$3,918,740	\$369,566
City of Oldsmar		\$509,000	\$600,000	\$719,000	\$919,000	\$942,136	\$23,136
City of Orange City				\$631,027	\$715,729	\$810,620	\$94,891
City of Orlando	\$22,878,645	\$22,632,278	\$23,881,352	\$23,881,352	\$23,881,352	\$24,829,798	\$948,446
City of Ormond Beach		\$2,550,000	\$2,550,000	\$239,890	\$2,539,966	\$2,539,966	\$0
City of Oviedo		\$697,000					
City of Palm Bay			\$3,135,767	\$12,200,000	\$10,157,317	\$10,157,317	\$0
City of Palm Coast	\$5,440,000	\$7,852,470	\$7,048,000	\$7,048,000	\$7,048,000	\$12,995,325	\$5,947,325
City of Pensacola	\$1,900,000	\$2,410,000	\$2,588,100	\$2,588,100	\$2,588,100	\$2,000,000	(\$588,100)
City of Pinellas Park			\$1,237,542	\$1,266,806	\$1,271,896	\$3,258,719	\$1,986,823
City of Plant City							
City of Plantation					\$1,285,216		
City of Pompano Beach		\$2,420,000	\$2,843,950	\$2,484,310	\$2,586,378	\$4,000,000	\$1,413,622
City of Port Orange							
City of Port Richey				\$120,000		\$118,638	\$118,638
City of Port St. Lucie			\$20,422,000	\$20,727,845	\$22,893,483	\$22,893,483	\$0
City of Riviera Beach		\$1,600,000	\$3,200,000			\$3,200,000	\$3,200,000
City of Rockledge	\$939,000	\$939,000	\$875,250	\$1,005,715	\$1,100,432	\$1,100,432	\$0
City of Safety Harbor	\$561,000	\$561,000	\$561,000	\$561,000	\$1,489,500	\$1,550,000	\$60,500
City of Sanford	\$3,746,409		\$4,705,595				
City of Satellite Beach			\$513,303	\$512,000	\$1,005,000	\$1,005,000	\$0
City of Sebastian			\$986,000	\$986,000	\$1,940,000		
City of St. Augustine		\$800,000		\$934,570	\$1,004,200	\$1,128,808	\$124,608
City of St. Cloud				\$1,800,000	\$2,013,000		
City of St. Pete Beach		\$619,300		\$619,300	\$1,231,700	\$1,347,700	\$116,000
City of St. Petersburg	\$11,000,000	\$13,000,000	\$13,000,000	\$16,000,000	\$18,000,000	\$18,000,000	\$0
City of Stuart	\$545,000	\$545,000	\$545,000	\$545,000	\$545,000	\$545,000	\$0
City of Sunny Isles Beach	\$525,000			\$1,005,488	\$1,169,975	\$1,482,477	\$312,502
City of Sunrise	\$4,034,100	\$6,202,817		\$7,225,952			
City of Tallahassee	\$9,000,000			\$17,200,000	\$17,800,000	\$19,079,490	\$1,279,490
City of Tamarac	\$4,953,790	\$4,953,790	\$4,346,747	\$5,539,717	\$5,879,590	\$6,107,898	\$228,308
City of Tampa	\$7,005,850	\$7,128,021	\$16,056,716	\$16,430,716	\$16,793,390	\$16,793,390	\$0
City of Tarpon Springs	\$1,028,000	\$1,028,000		\$1,340,092	\$1,589,975	\$1,735,314	\$145,339
City of Tavares	\$139,760	\$139,760	\$964,613	\$1,287,510	\$1,564,010	\$1,564,010	\$0
City of Titusville	\$2,000,000	\$2,300,000	\$2,300,000	\$2,500,000	\$2,714,983	\$2,724,028	\$9,045

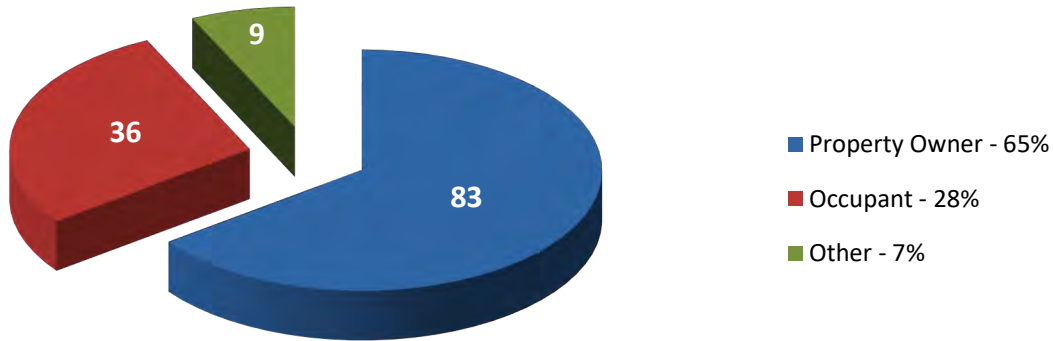
**2-8 Comparative Annual Stormwater Revenue (continued)**

Jurisdiction	2011	2014	2016	2018	2020	2022	Change
City of Umatilla			\$99,000	\$99,000	\$99,000	\$99,000	\$0
City of West Melbourne			\$386,431	\$366,577	\$617,120	\$680,146	\$63,026
City of West Miami	\$85,000		\$126,534	\$150,566		\$163,161	
City of West Palm Beach			\$10,748,860	\$10,748,860	\$10,748,860	\$15,376,467	\$4,627,607
City of Wilton Manors	\$250,000	\$250,000	\$250,000	\$480,000	\$480,000	\$550,000	\$70,000
City of Winter Garden				\$1,506,992	\$1,589,244	\$1,589,244	\$0
City of Winter Haven		\$1,409,395	\$1,409,395	\$1,700,000	\$1,860,611	\$2,014,950	\$154,339
City of Winter Park	\$2,951,679	\$2,963,998	\$3,021,777	\$3,050,687	\$2,783,911	\$3,565,000	\$781,089
City of Winter Springs	\$1,050,000	\$980,000	\$1,090,000	\$1,090,000			
Hillsborough County	\$5,800,000	\$6,300,000	\$16,900,000	\$19,808,100	\$30,384,880	\$31,672,650	\$1,287,770
Lake County	\$3,200,000	\$3,200,000	\$504,000	\$582,300	\$582,300		
Leon County	\$1,070,599	\$3,203,866	\$3,492,616	\$3,539,181	\$3,539,181	\$3,684,258	\$145,077
Marion County	\$3,400,000	\$3,500,000	\$3,500,000	\$3,700,000	\$4,124,705	\$3,793,235	(\$331,470)
Miami-Dade County	\$31,000,000	\$31,000,000	\$31,000,000	\$31,000,000	\$31,000,000	\$31,000,000	\$0
Pasco County	\$11,000,000	\$12,000,000	\$14,000,000	\$25,000,000	\$25,000,000	\$27,000,000	\$2,000,000
Pinellas County		\$17,006,064	\$18,000,000	\$19,800,000	\$19,700,000	\$19,700,000	\$0
Polk County		\$1,400,000	\$1,400,000	\$1,670,000	\$1,670,000	\$2,500,000	\$830,000
Sarasota County	\$16,994,185		\$17,092,167	\$16,207,778	\$17,522,361	\$18,037,741	\$515,380
Town of Bay Harbor Islands			\$206,000				
Town of Belleair			\$350,000	\$350,000	\$337,400	\$337,400	\$0
Town of Cutler Bay			\$950,000	\$950,000	\$1,030,000	\$1,030,000	\$0
Town of Jupiter	\$2,206,489	\$2,229,043	\$2,493,964	\$2,782,844	\$3,196,014	\$3,500,442	\$304,428
Town of Malabar			\$72,000	\$108,000	\$108,000	\$128,780	\$20,780
Town of Medley				\$1,000,000			
Town of Melbourne Beach		\$53,000	\$53,000	\$53,000	\$53,000	\$53,000	\$0
Town of Pembroke Park		\$1,225,000		\$1,345,000	\$1,440,000	\$1,440,000	\$0
Town of Redington Shores			\$45,000	\$45,000	\$45,000	\$45,000	\$0
Town of Surfside			\$137,000	\$137,000	\$137,000	\$137,000	\$0
Village of Indian Creek	\$181,000	\$181,000	\$181,000	\$183,538	\$183,538	\$182,835	(\$703)
Village of Key Biscayne			\$1,003,187	\$1,003,187	\$1,640,490	\$1,640,490	\$0
Village of Miami Shores	\$224,000						
Village of Palm Springs				\$383,731	\$518,769	\$382,799	(\$135,970)
Village of Pinecrest	\$449,041	\$449,041	\$919,600	\$1,253,686	\$1,253,686		
Village of Wellington			\$5,700,000	\$5,700,000	\$6,100,000	\$6,100,000	\$0
Volusia County	\$4,842,897	\$4,622,778	\$4,780,750	\$4,780,750	\$4,499,656	\$4,499,656	\$0

Year	2011	2014	2016	2018	2020	2022
<b>Total</b>	<b>\$316,556,415</b>	<b>\$322,769,203</b>	<b>\$443,030,723</b>	<b>\$527,064,798</b>	<b>\$560,933,888</b>	<b>\$600,156,032</b>
<b>Average</b>	<b>\$3,813,933</b>	<b>\$3,626,620</b>	<b>\$3,661,411</b>	<b>\$3,962,893</b>	<b>\$4,281,938</b>	<b>\$4,801,938</b>



**2-9 Who is responsible for paying your utility fee?**

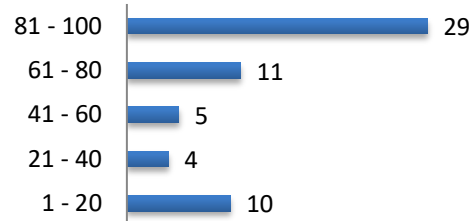
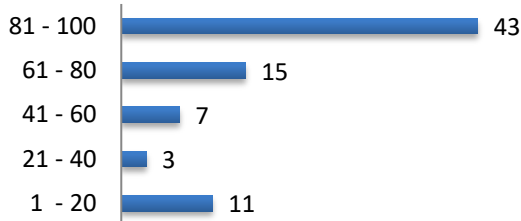


**2-10 For properties that are charged a fee based on actual, on-site impervious area (i.e. *not* a customer class average) please estimate how a majority of this information was initially collected and how it is maintained for your billing database?**

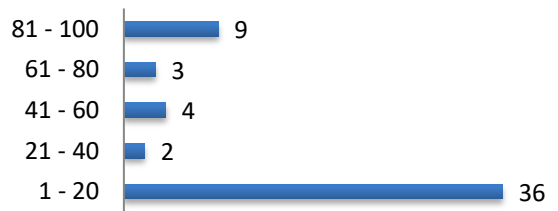
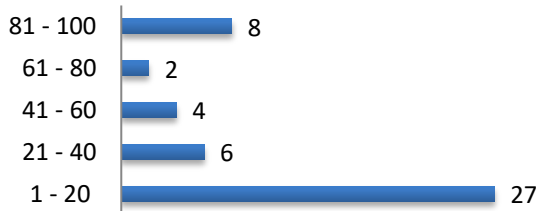
**Initially Collected**

**Maintained**

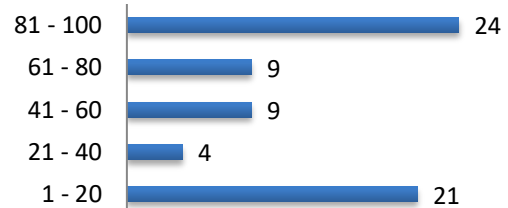
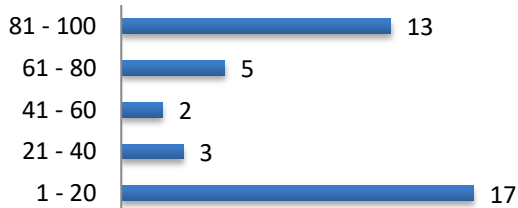
Percent of Parcel Data Acquired from Property Appraiser's



Percent of Parcel Data Acquired from Physical On-Site Measurement



Percent of Parcel Data Acquired from Permit Records



**2-10** For properties that are charged a fee based on actual, on-site impervious area (i.e. *not* a customer class average) please estimate how a majority of this information was initially collected and how it is maintained for your billing database? (continued)

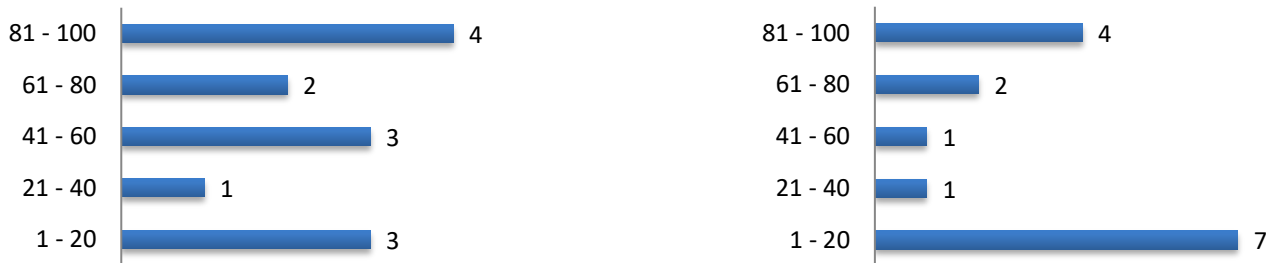
**Initially Collected**

**Maintained**

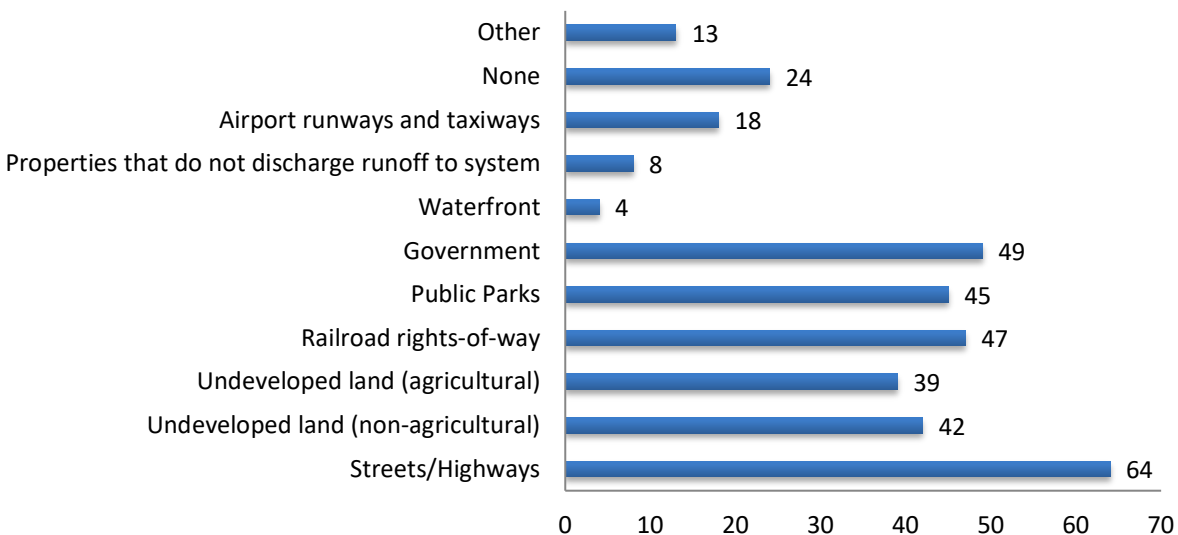
Percent of Parcel Data Acquired from Air Photos



Percent of Parcel Data Acquired from Other Sources



**2-11** What properties are exempt from your user fees?



**2-12** Please indicate your billing practices with regard to the following governmentally owned properties:

	Exempt	Bill and collect	Bill but do not collect	Not billed
Federal	35	48	8	15
State	37	45	9	17
County	37	56	6	15
City	39	61	5	16
School District	44	39	19	16
Special District	20	52	4	13

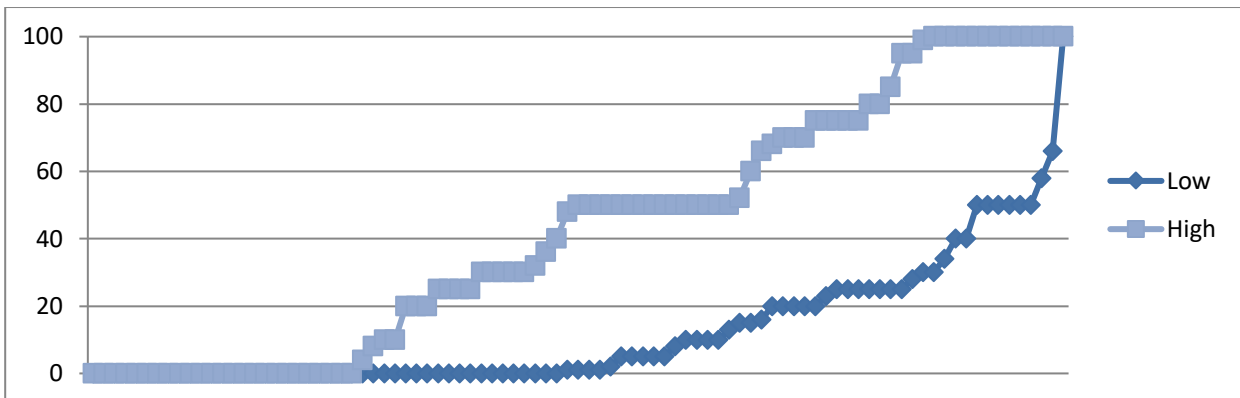
**2-13** Of those accounts that receive credits, what is the average percent reduction in the utility fee?

Average Reduction:	27.97 %
--------------------	---------

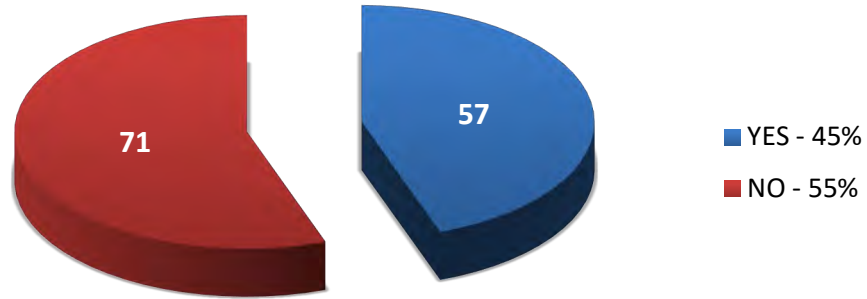
**2-14** Of the total number of SWU accounts, how many receive credits?

Reported number of accounts that receive credits:	345,177
Average number of accounts that receive credits:	3,226

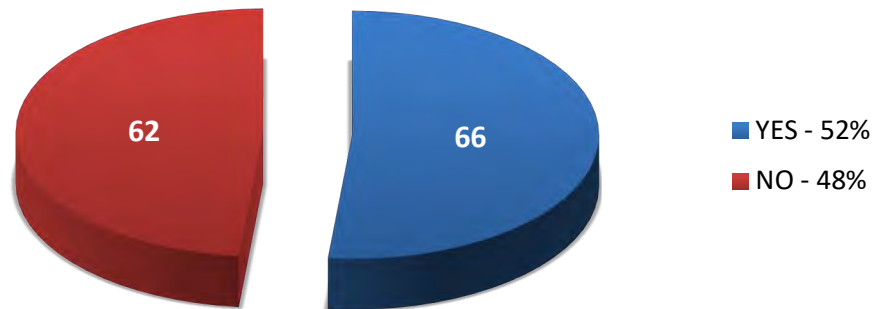
**2-15** Of those accounts that receive credits, what is the range in possible percent reductions in SWU fees?



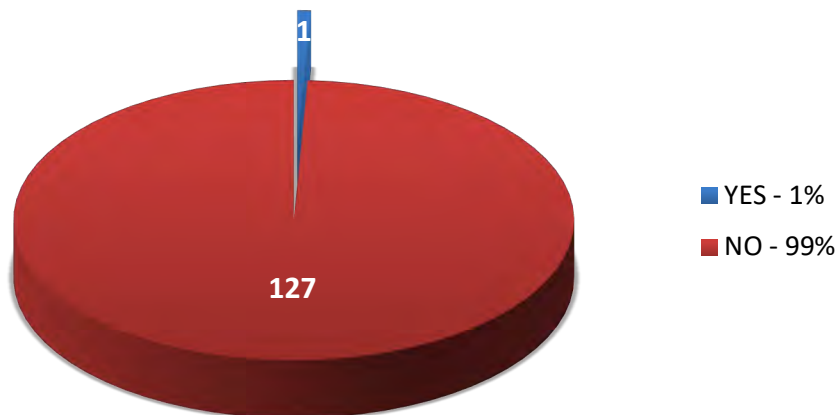
**2-16** Are credits provided for private detention/retention facilities?



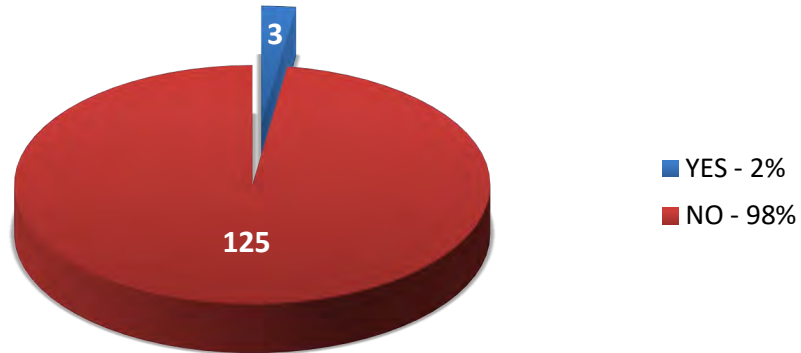
**2-17** Are user fees for single-family detached dwellings the same as for individual units in multi-family (e.g. apartments, condominiums)?



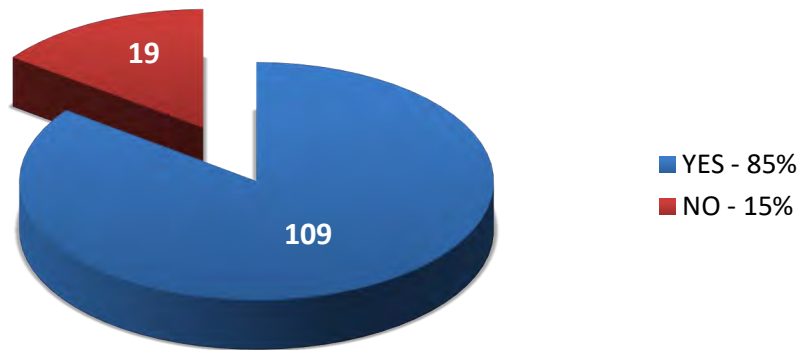
**2-18** Do user fees vary by watershed?



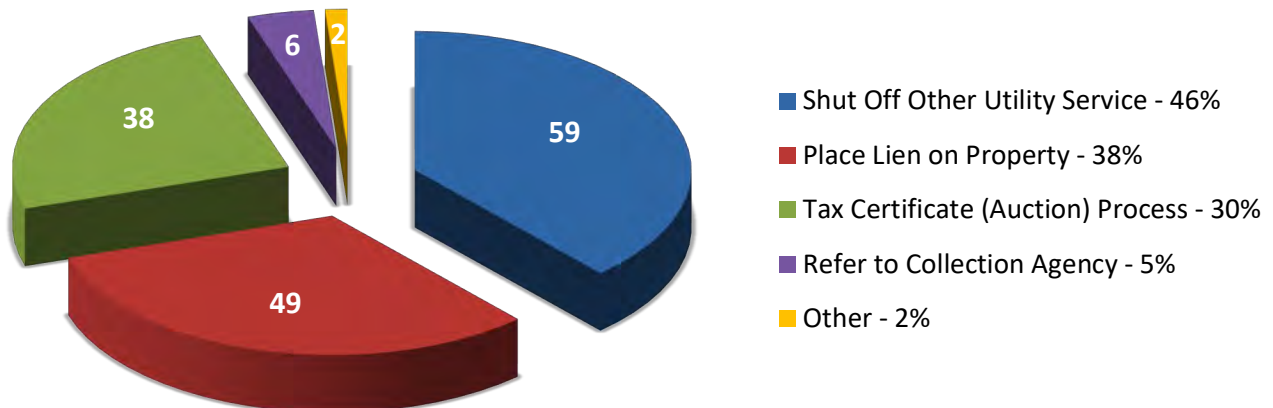
**2-19** Are different fees charged within the “zone-of-benefit” of specific capital projects to account for differences in capital costs?



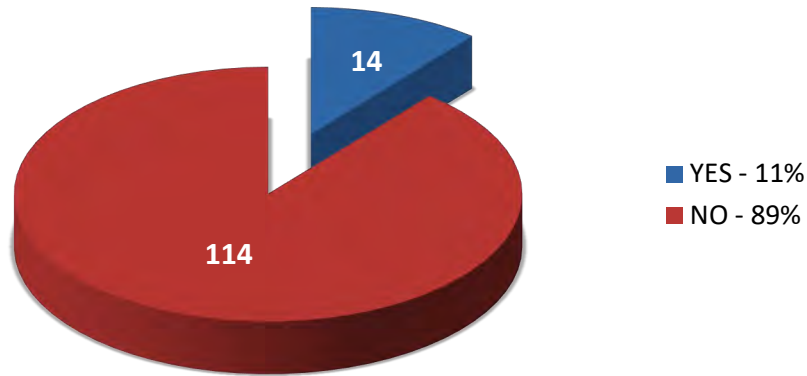
**2-20** Does your local code require private detention/retention facilities?



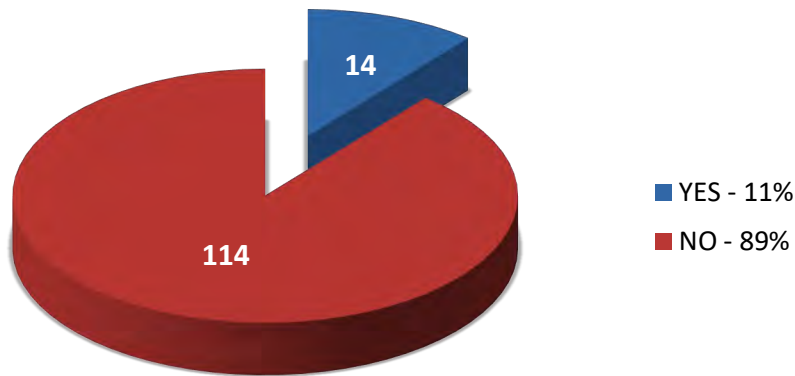
**2-21** How is payment of the utility charge enforced?  
(multiple responses accepted)



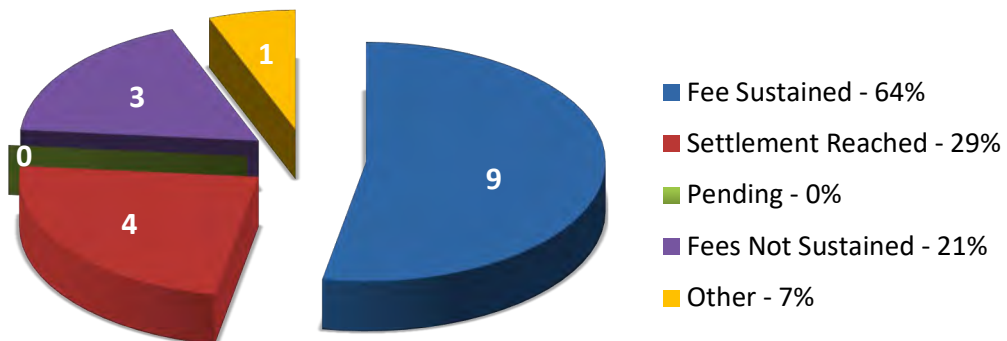
**2-22** Were interim rates established during the formation of the utility prior to adoption of a permanent rate format?



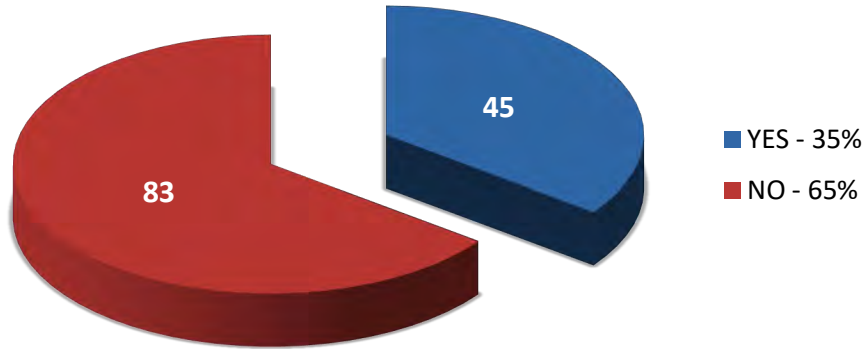
**2-23** Have your stormwater fees or assessments faced a legal challenge in court?



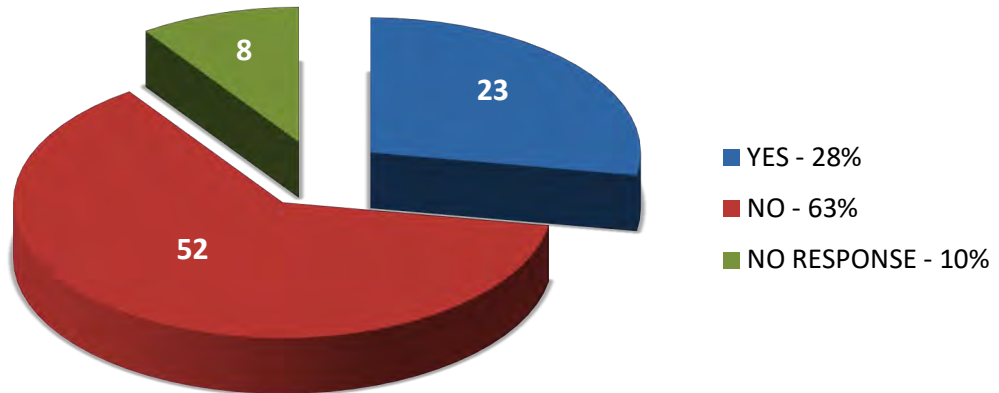
**2-24** If your charges have been challenged in court, what was the outcome?  
(multiple responses accepted)



**2-25** Has your jurisdiction modified your SWU rate structure to take into account new water quality requirements and corresponding costs as a result of the TMDL program?



If not, are you actively considering such modifications?





# ema

**chen moore and associates**



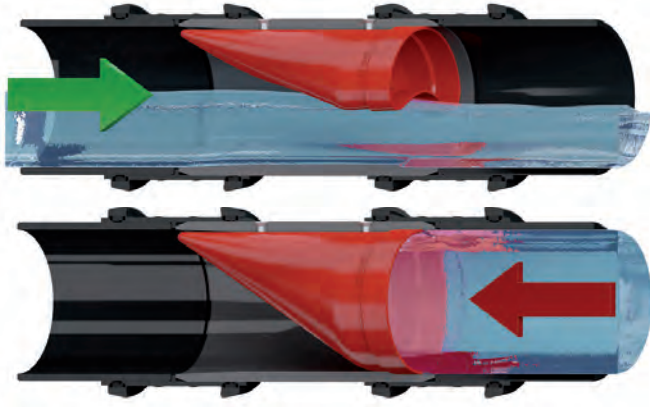
[www.chenmoore.com](http://www.chenmoore.com)



# Stormwater Program

# WASTOP®

## WASTOP® INLINE CHECK VALVE



We all know someone who has been affected by it. We see it, feel it and experience it. Climate change and rising sea levels are affecting us all. Through the innovation of WaStop Inline Check Valve, we at Wapro have prevented thousands of floods worldwide.

In order to protect against flooding, we at Wapro have engineered the WaStop to ensure the lowest possible opening pressure whilst maintaining the best possible seal against backflow. This, combined with the lowest headloss available, gives the most efficient flow conditions, ensuring the fastest evacuation of water. An essential quality of check valves used to protect people and property. WaStop protects.

### THE BENEFITS OF WASTOP®

- Easy installation saving on construction & installation costs
- Superior construction materials
- Lowest headloss amongst inline check valves
- Low life cycle cost
- No moving parts - virtually maintenance-free
- Many dimensions 3" - 80" std & non-standard pipes
- Stops liquids, gases, odors, insects and small animals

### APPLICATIONS - WASTE WATER, SURFACE WATER, TIDAL AREAS

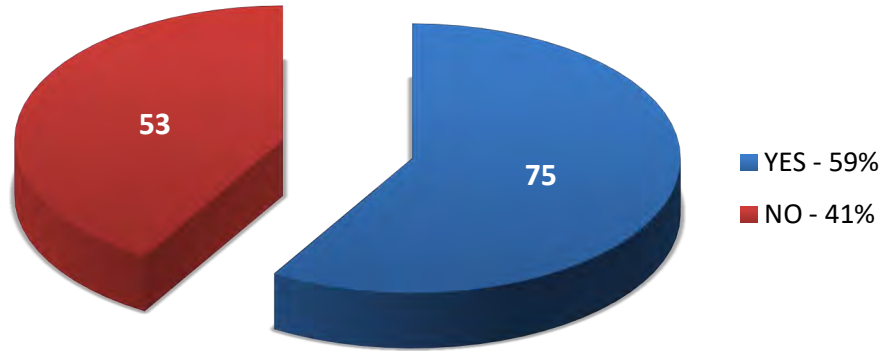
We at Wapro know that any solution for flood prevention or odor control needs to function. Simply, effectively. That's why, when we invented the WaStop inline check valve in 2000 we had one thought in mind. Instant automatic protection. Working on differential pressure the WaStop functions autonomously, without human interaction, without electricity, without constant maintenance. It just works.

To invent the best inline check valve on the market our engineers went one step further. We also thought about the different parts of the process and who would be affected by the design of the valve. With function at the forefront of their minds, our engineers developed a valve that works in stormwater, sewer, odor applications, as well as ensuring coverage of existing pipes sizes to enable retro-fitting with ease. We cover all sizes of pipes, all shapes, from 3" - 80". As standard. Off the shelf in most cases, for fast delivery. We keep a stock to ensure the contractor and end user can keep time and costs to a minimum.

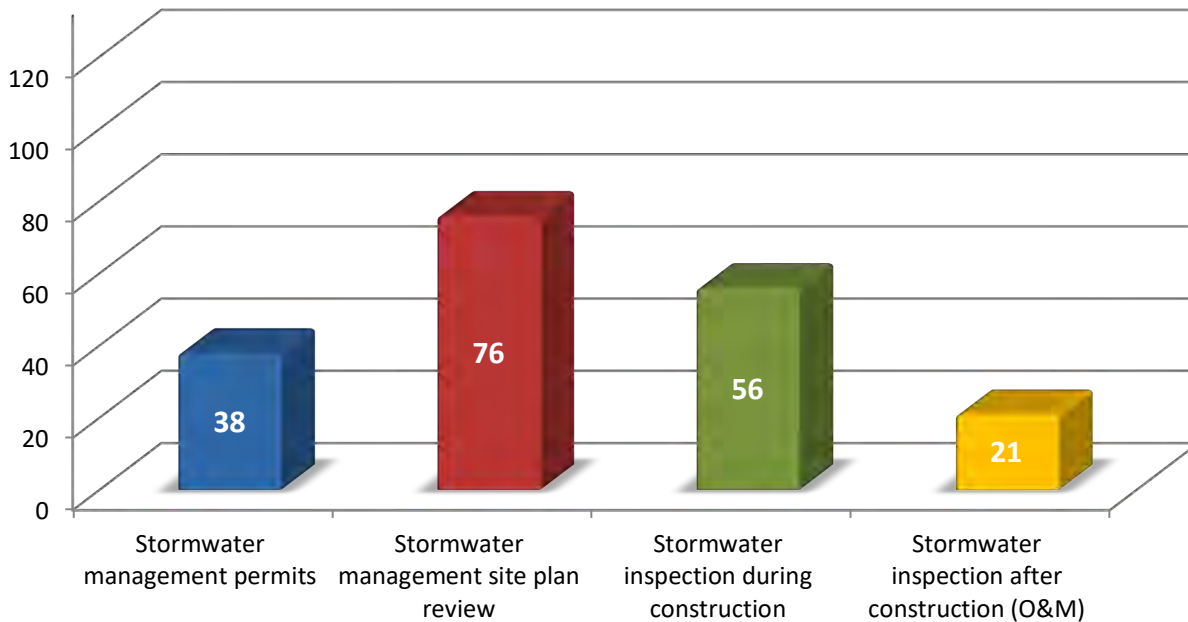


# WAPRO

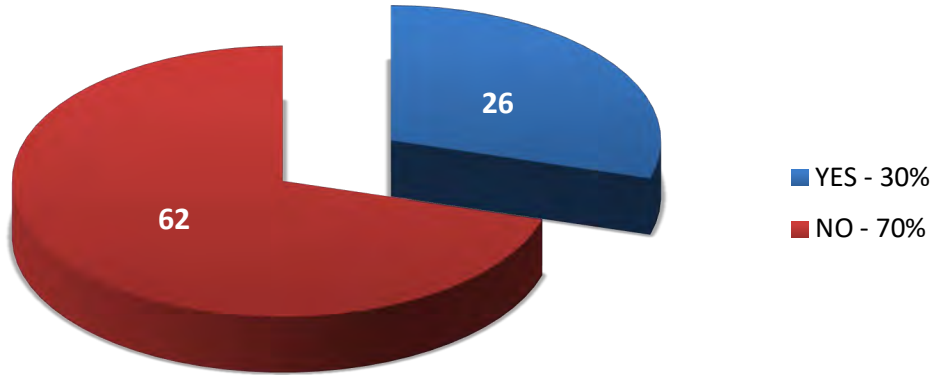
**3-1** Does your utility use operation and maintenance permits (or other enforcement methods) to require private owners to maintain their on-site stormwater facilities?



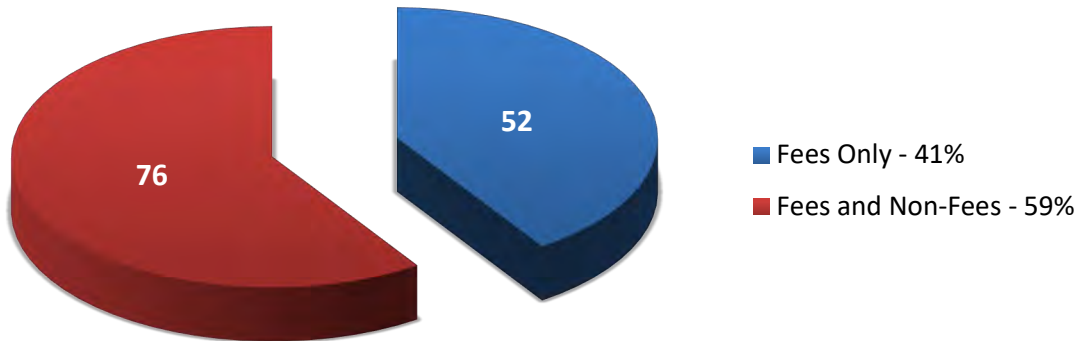
**3-2** Does your jurisdiction charge a fee for:  
(multiple responses were accepted)



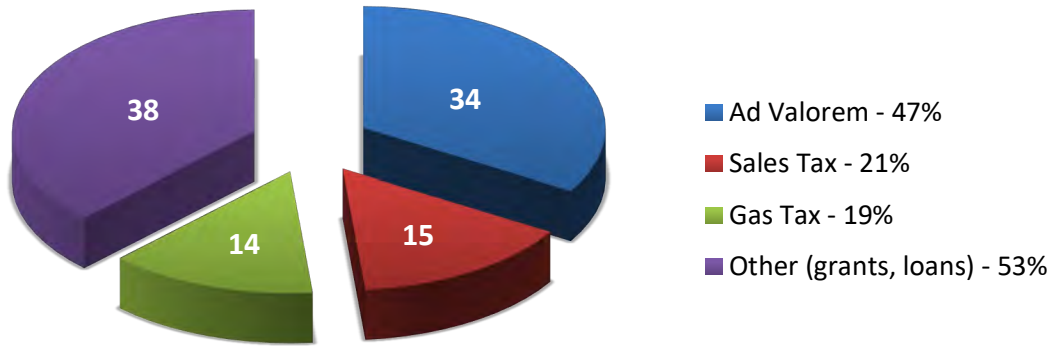
**3-3** If your jurisdiction does charge fees for any of the services in question 3-2, does your SWU receive some or all of these revenues?



**3-4** Is your stormwater capital construction program funded only from stormwater fee revenue?



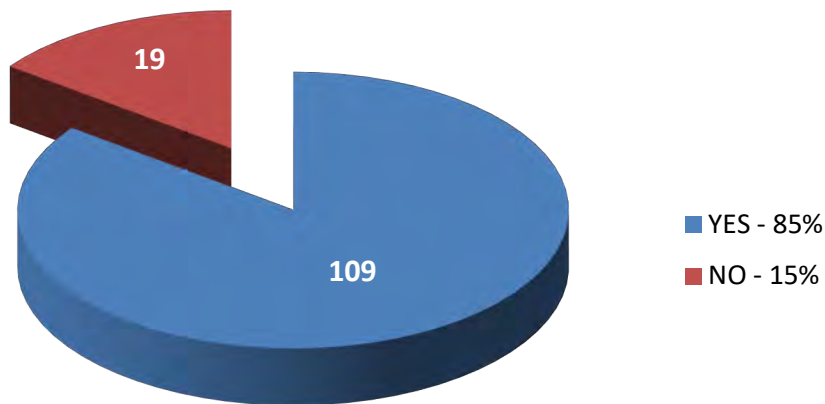
**3-5** If non-fee funds are used for capital construction, what is the source of the revenue?  
(multiple responses were accepted)



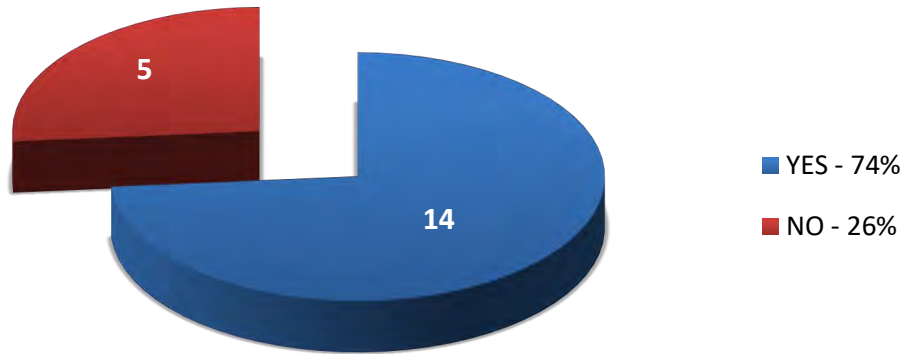
**3-6** Please estimate your jurisdiction’s capital improvement needs for stormwater management over the following periods of time.

Period of Time	Estimated Need (total)	Average Need	# Respondents
Next 5 Years	\$2,268,471,532	\$18,903,929	120
Next 10 Years	\$4,730,053,042	\$46,832,208	101
Next 20 Years	\$10,412,629,199	\$121,077,084	86

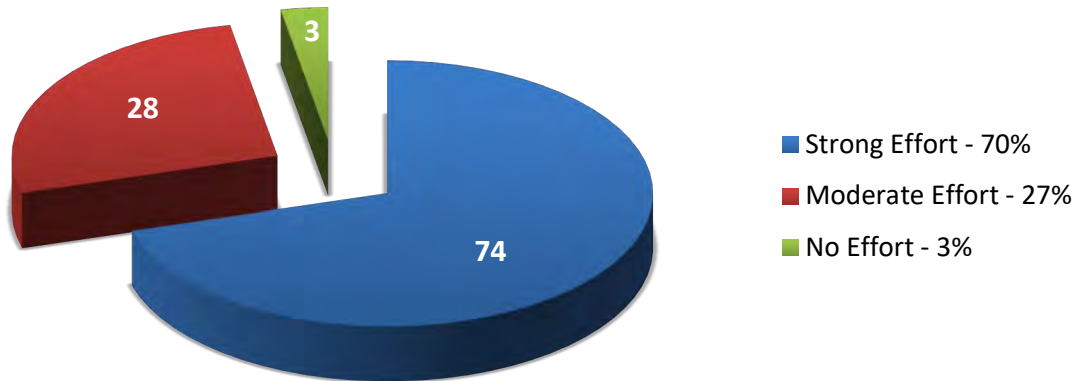
**3-7** Does your jurisdiction have an adopted stormwater master plan?



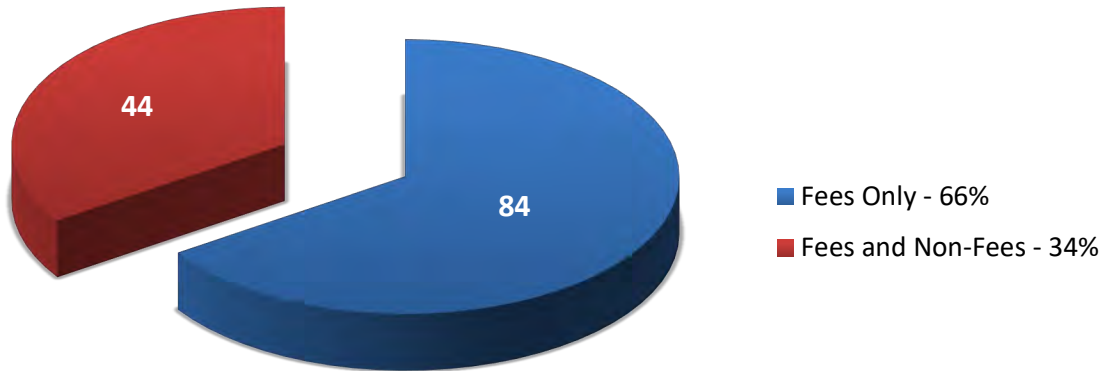
**3-8** If your jurisdiction does not have an adopted stormwater master plan (i.e. you answered “No” to question 3-7), is the establishment of such a plan under active consideration?



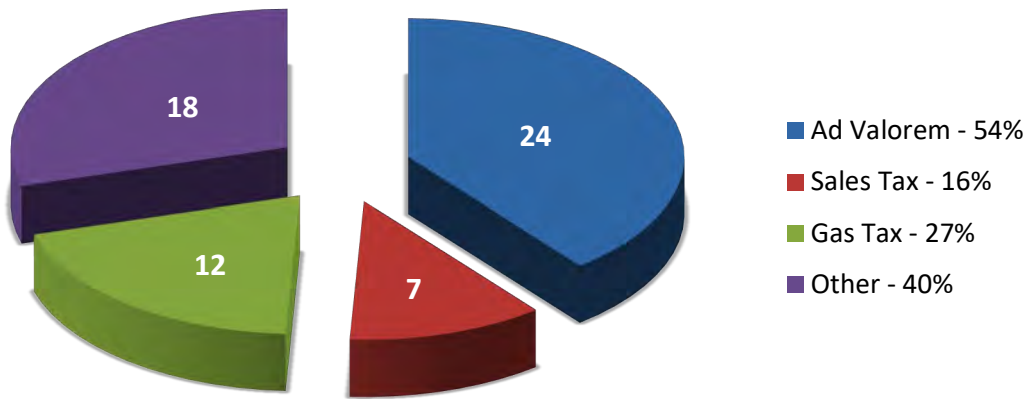
**3-9** If your jurisdiction does have an adopted stormwater master plan (i.e. you answered “Yes” to question 3-7), does your jurisdiction make an effort to coordinate your Local Government Comprehensive Plan with your stormwater Master Plan and NPDES Program concepts?



**3-10** Is your stormwater operating budget funded from only stormwater fee revenue, or are other non-fee funds utilized?



**3-11** If non-fee funds are used for operations, what is the source of the revenue?  
(multiple responses were accepted)



**3-12 What is the current number of full-time equivalent employees funded with stormwater fee revenue?**

Jurisdiction	Revenue	FTE's
Alachua County	\$1,951,246	9.5
Bay County	\$1,000,000	3
Brevard County	\$6,560,026	16.36
City of Altamonte Springs	\$2,003,165	15
City of Auburndale	\$112,816	0
City of Aventura	\$1,300,000	2.5
City of Bradenton Beach	\$309,520	2
City of Callaway	\$85,000	0
City of Cape Canaveral	\$1,069,796	2
City of Cape Coral	\$20,227,445	99
City of Casselberry	\$2,353,108	10.75
City of Clearwater	\$16,925,590	52
City of Clermont	\$1,800,000	7
City of Cocoa	\$1,890,701	7
City of Cocoa Beach	\$881,307	4.2
City of Coconut Creek	\$1,762,000	9
City of Cooper City	\$550,100	4
City of Coral Gables	\$6,396,266	8
City of Daytona Beach	\$13,950,498	35
City of DeBary	\$791,000	5
City of Deerfield Beach	\$1,800,000	5
City of DeLand	\$910,000	10.5
City of Delray Beach	\$2,210,727	1
City of Doral	\$3,700,000	2
City of Dunedin	\$4,120,000	14.66
City of Edgewater	\$1,892,121	12
City of Eustis	\$850,806	4.5
City of Fernandina Beach	\$850,000	6
City of Fort Lauderdale	\$28,000,000	39
City of Fort Meade	\$192,170	1.5
City of Fort Myers	\$6,500,000	18.6
City of Fort Pierce	\$2,542,540	3
City of Fort Walton Beach	\$970,866	6
City of Fruitland Park	\$48,000	0
City of Gainesville	\$9,161,009	65
City of Green Cove Springs	\$177,400	2
City of Gulf Breeze	\$460,274	3.788
City of Gulfport	\$409,368	3.66
City of Hialeah	\$3,300,000	25
City of Homestead	\$1,876,373	11
City of Indian Harbour Beach	\$218,293	0
City of Jacksonville	\$31,561,888	150
City of Key Colony Beach	\$197,000	0.12
City of Key West	\$2,351,456	11
City of Kissimmee	\$834,527	34

Jurisdiction	Revenue	FTE's
City of Lake Alfred	\$45,000	0
City of Lake Mary	\$413,000	2
City of Lake Worth Beach	\$1,575,000	10
City of Lakeland	\$7,573,331	28
City of Largo	\$6,825,000	36
City of Longwood	\$650,000	4
City of Madeira Beach	\$375,000	1
City of Marathon	\$1,037,326	2
City of Margate	\$2,071,000	11
City of Mascotte	\$213,000	1
City of Melbourne	\$2,925,000	6.5
City of Miami	\$12,575,573	32
City of Miami Gardens	\$5,845,253	12
City of Miami Springs	\$450,000	3
City of Minneola	\$262,870	2
City of Mulberry	\$280,000	3
City of Naples	\$5,465,100	15
City of New Port Richey	\$1,068,910	5
City of New Smyrna Beach	\$2,417,000	1
City of Niceville	\$500,000	0
City of North Lauderdale	\$1,193,100	8
City of North Miami	\$2,624,268	10
City of Oakland Park	\$3,150,074	5
City of Ocala	\$6,835,282	28
City of Ocoee	\$3,918,740	7
City of Oldsmar	\$942,136	5
City of Orange City	\$810,620	2
City of Orlando	\$24,829,798	85
City of Ormond Beach	\$2,539,966	9.9
City of Palm Bay	\$10,157,317	32
City of Palm Coast	\$12,995,325	55
City of Pensacola	\$2,000,000	26
City of Pinellas Park	\$3,258,719	18.5
City of Pompano Beach	\$4,000,000	12
City of Port Richey	\$118,638	1
City of Port St. Lucie	\$22,893,483	74
City of Riviera Beach	\$3,200,000	10
City of Rockledge	\$1,100,432	3
City of Safety Harbor	\$1,550,000	5.4
City of Satellite Beach	\$1,005,000	3
City of St. Augustine	\$1,128,808	5
City of St. Pete Beach	\$1,347,700	3.15
City of St. Petersburg	\$18,000,000	120.9
City of Stuart	\$545,000	3.33
City of Sunny Isles Beach	\$1,482,477	1

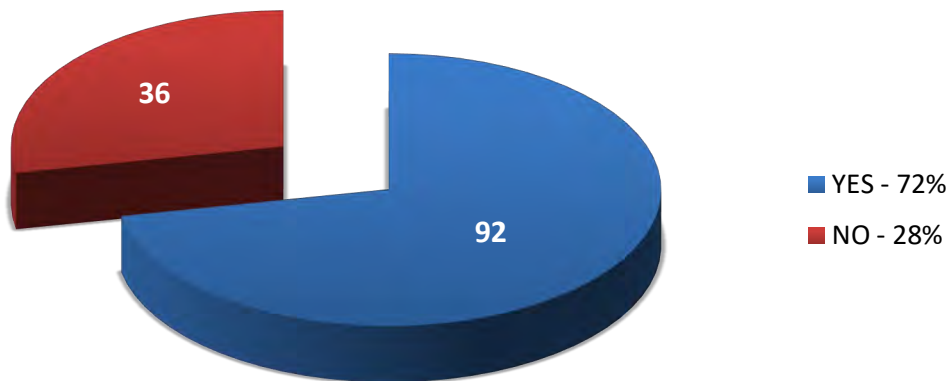


**3-12** What is the current number of full-time equivalent employees funded with stormwater fee revenue? (continued)

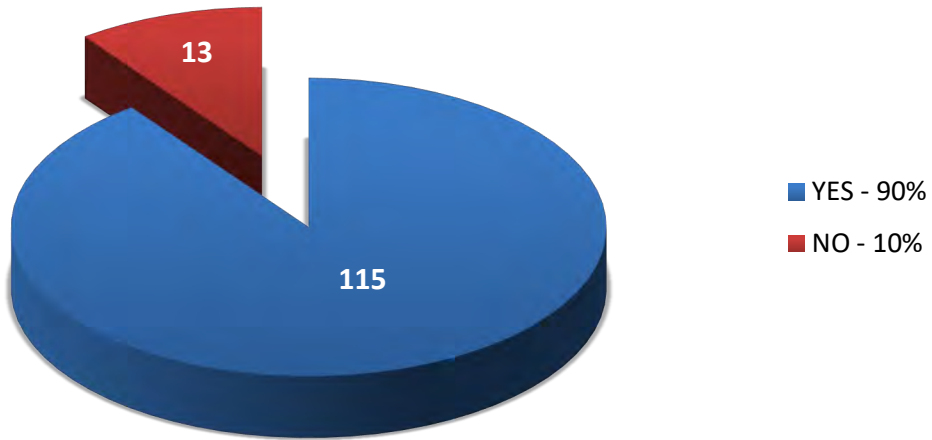
Jurisdiction	Revenue	FTE's
City of Tallahassee	\$19,079,490	104
City of Tamarac	\$6,107,898	25
City of Tampa	\$16,793,390	93
City of Tarpon Springs	\$1,735,314	10.1
City of Tavares	\$1,564,010	4
City of Titusville	\$2,724,028	20
City of Umatilla	\$99,000	0
City of West Melbourne	\$680,146	3
City of West Miami	\$163,161	1
City of West Palm Beach	\$15,376,467	31
City of Wilton Manors	\$550,000	2
City of Winter Garden	\$1,589,244	3
City of Winter Haven	\$2,014,950	14.7
City of Winter Park	\$3,565,000	22
Hillsborough County	\$31,672,650	6
Leon County	\$3,684,258	46
Marion County	\$3,793,235	11.5
Miami-Dade County	\$31,000,000	100

Jurisdiction	Revenue	FTE's
Pasco County	\$27,000,000	68
Pinellas County	\$19,700,000	181
Polk County	\$2,500,000	1
Sarasota County	\$18,037,741	86
Town of Belleair	\$337,400	0
Town of Cutler Bay	\$1,030,000	2
Town of Jupiter	\$3,500,442	6.5
Town of Lantana	\$0	6
Town of Malabar	\$128,780	0
Town of Melbourne Beach	\$53,000	0
Town of Pembroke Park	\$1,440,000	1.5
Town of Redington Shores	\$45,000	0
Town of Surfside	\$137,000	5
Village of Indian Creek	\$182,835	0
Village of Key Biscayne	\$1,640,490	1.5
Village of Palm Springs	\$382,799	0
Village of Wellington	\$6,100,000	15.75
Volusia County	\$4,499,656	53

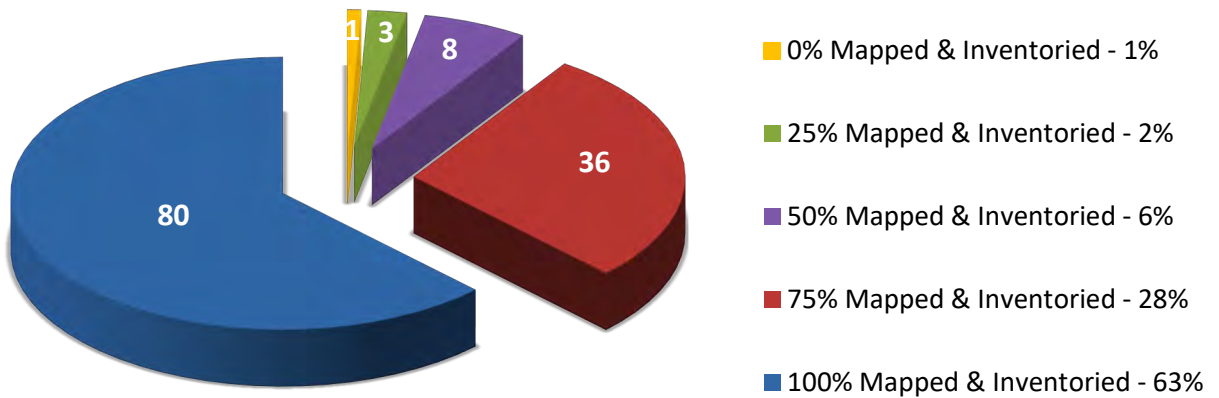
**3-13** Does your jurisdiction monitor improvements in water quality?



**3-14** Does your jurisdiction monitor improvements in flood protection?

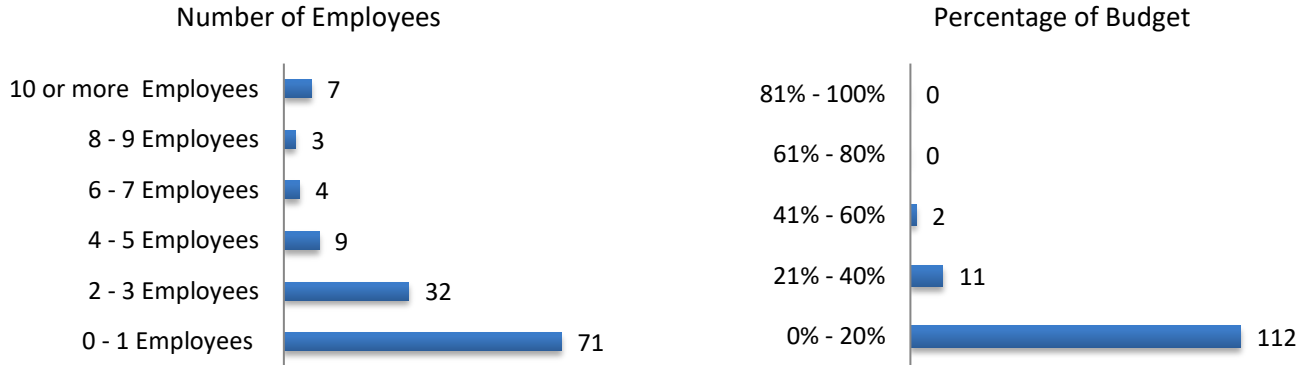


**3-15** What percentage of your jurisdiction's stormwater facilities are mapped and inventoried?

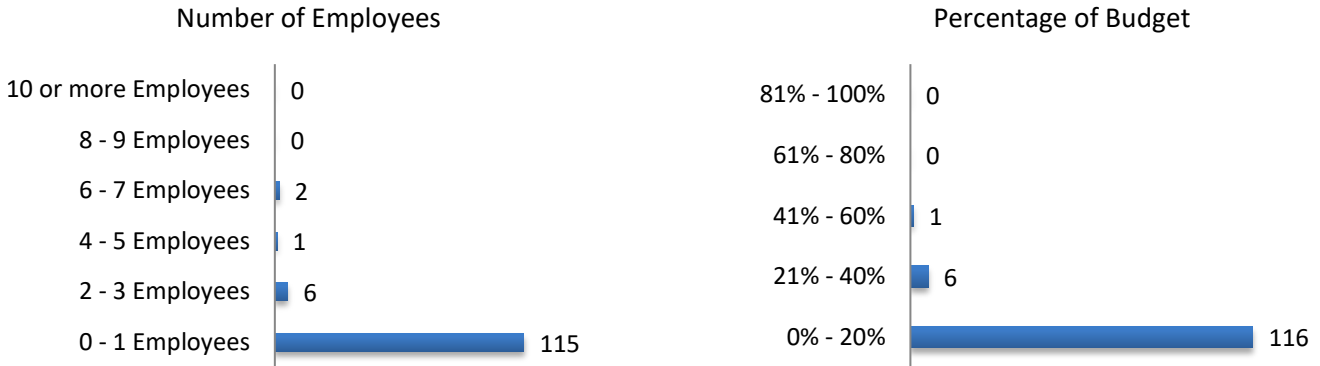


**3-16** Estimate the number of employees (FTEs) and the percentage of your total stormwater program’s annual budget allocated to the following program categories:

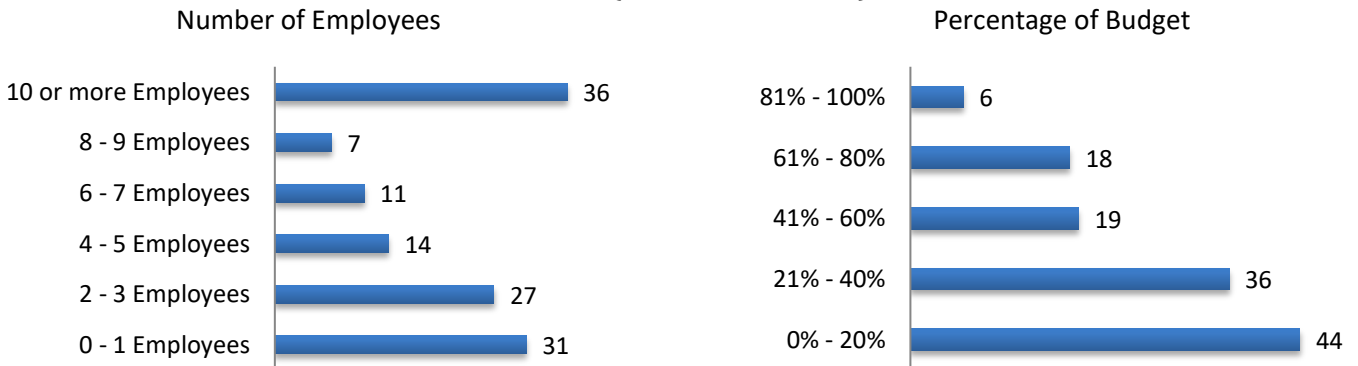
**Administration (management, billing, records, etc.)**



**Overhead Charges (Indirect Cost Allocation) Paid to Parent Governmental Jurisdiction**

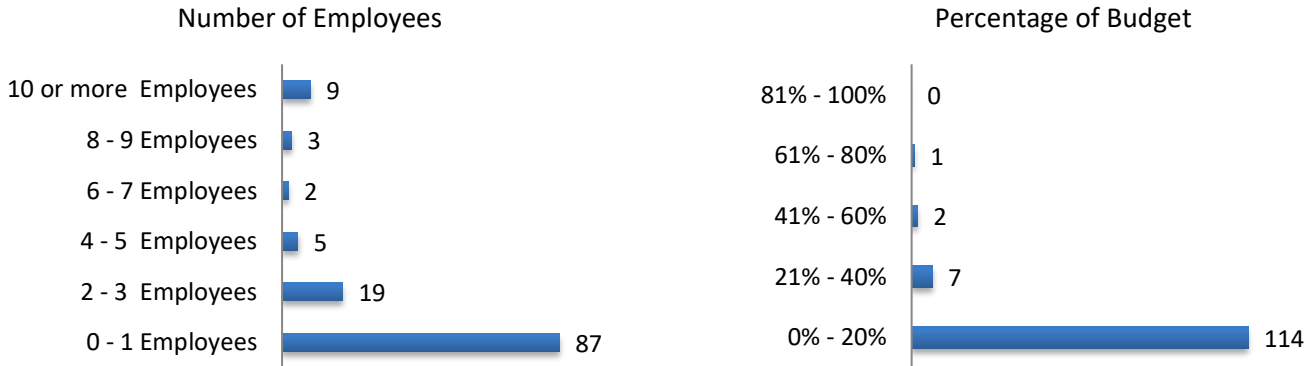


**O&M (Field Activities)**

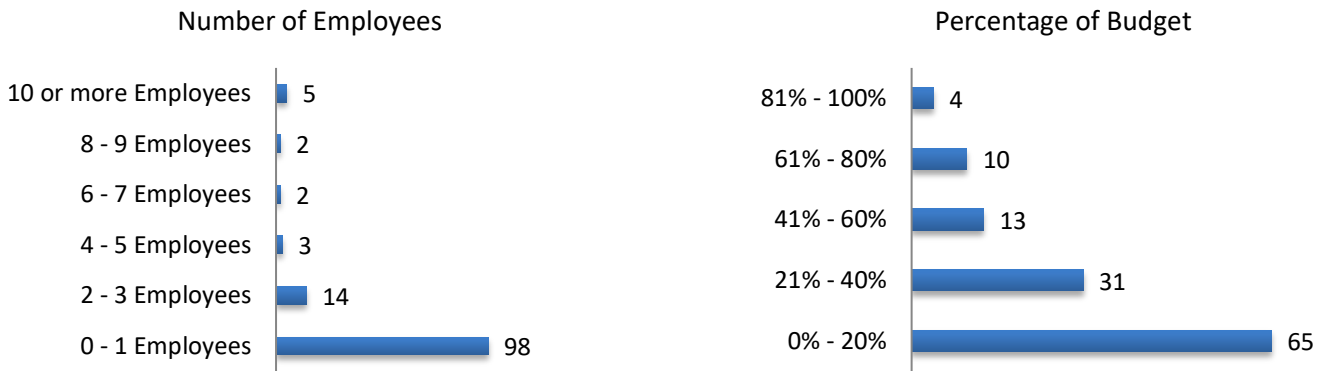


**3-16** Estimate the number of employees (FTEs) and the percentage of your total stormwater program’s annual budget allocated to the following program categories: (continued)

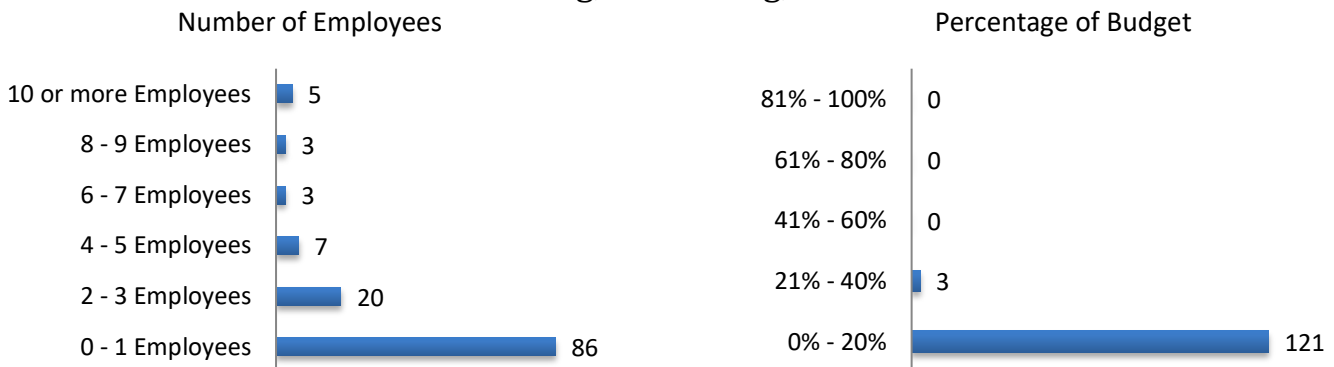
**Technical (Planning, Engineering)**



**C.I.P**

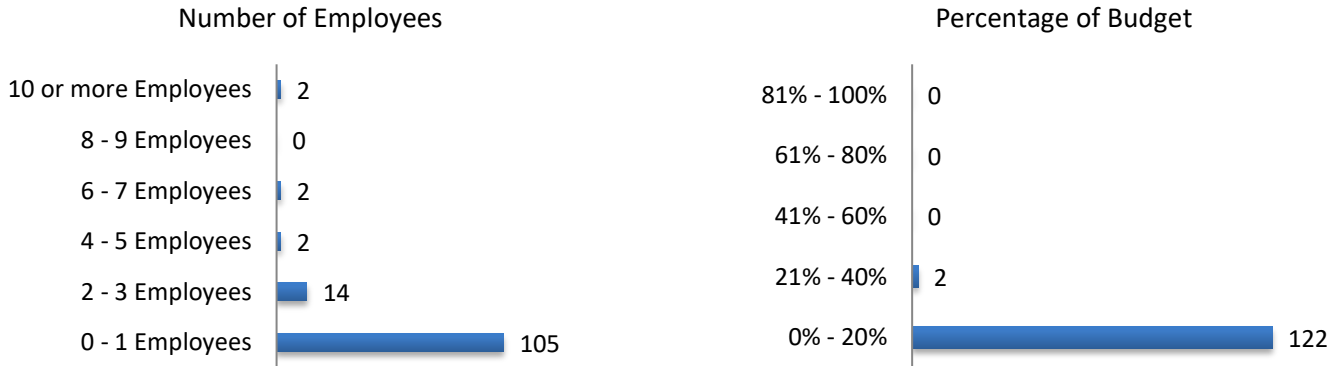


**Monitoring, Permitting, Enforcement**

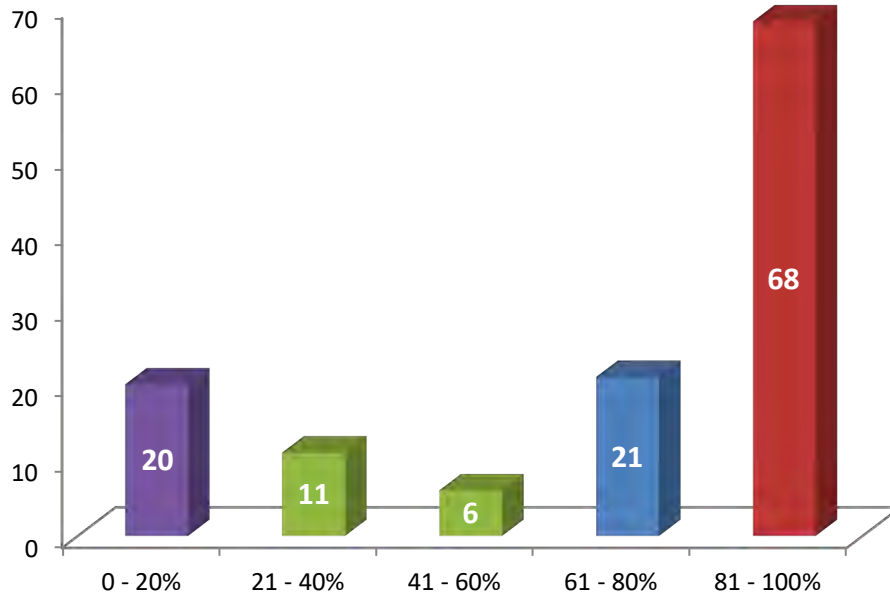


**3-16** Estimate the number of employees (FTEs) and the percentage of your total stormwater program’s annual budget allocated to the following program categories: (continued)

**Public Education & Information**

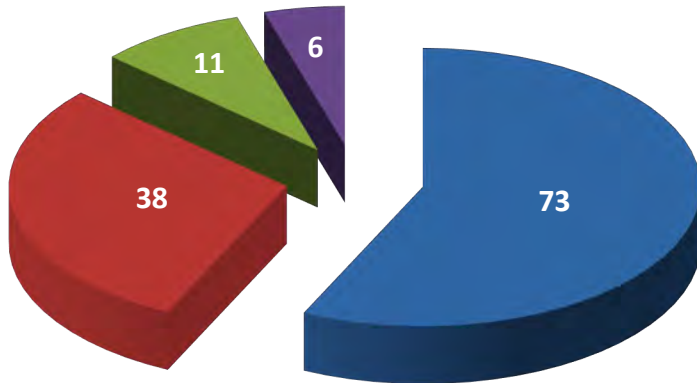


**3-17** For Operations and Maintenance (field) personnel, how many received formal training or certification (from FSA, FDEP, FWPCOA, etc.)?



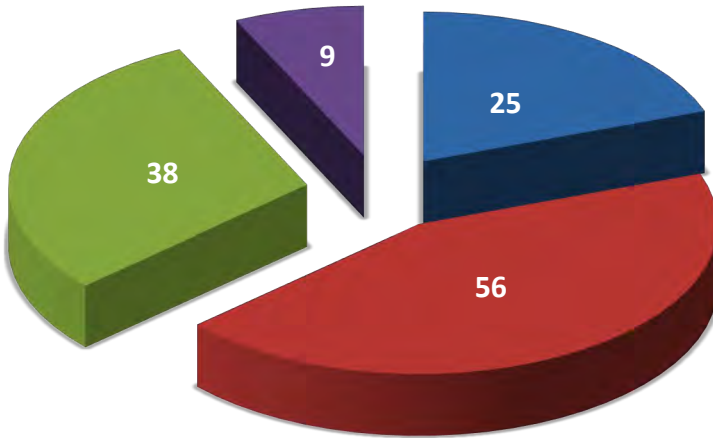
**3-18** Is the stormwater fee revenue sufficient to address the following program areas?

Administration



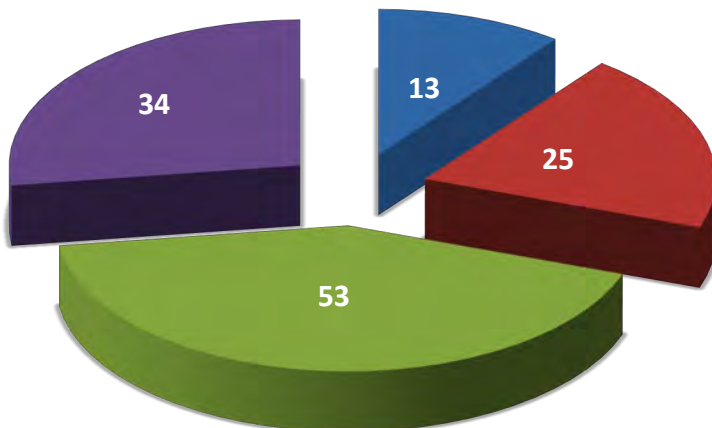
- Adequate to Meet All Needs - 57%
- Adequate to Meet Most Needs - 30%
- Adequate to Meet Urgent Needs - 9%
- Not Adequate to Meet Urgent Needs - 5%

O & M



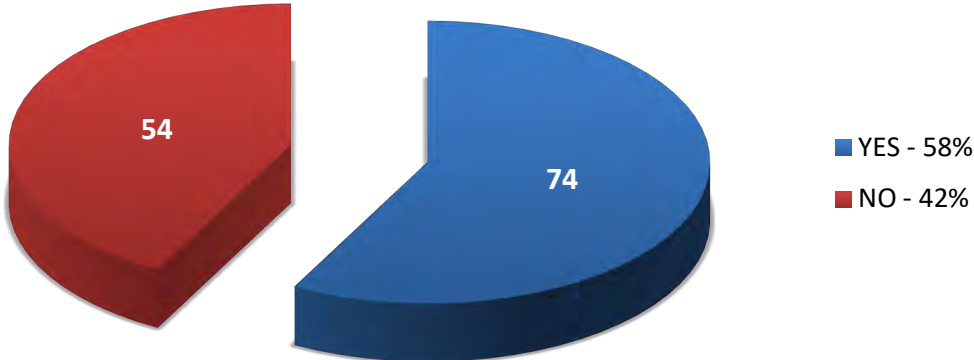
- Adequate to Meet All Needs - 20%
- Adequate to Meet Most Needs - 44%
- Adequate to Meet Urgent Needs - 30%
- Not Adequate to Meet Urgent Needs - 7%

C.I.P.



- Adequate to Meet All Needs - 10%
- Adequate to Meet Most Needs - 20%
- Adequate to Meet Urgent Needs - 42%
- Not Adequate to Meet Urgent Needs - 27%

**3-19** Does your utility manage the FEMA community rating system flood management program for your jurisdiction?



**LAND & WATER**  
ENGINEERING SCIENCE

*Engineering for a Sustainable Environment*

*Water Resources*

*Watershed & Resiliency Planning*

*Civil Engineering*

*Geographic Information Systems*

*Project Management*

*Construction Management*

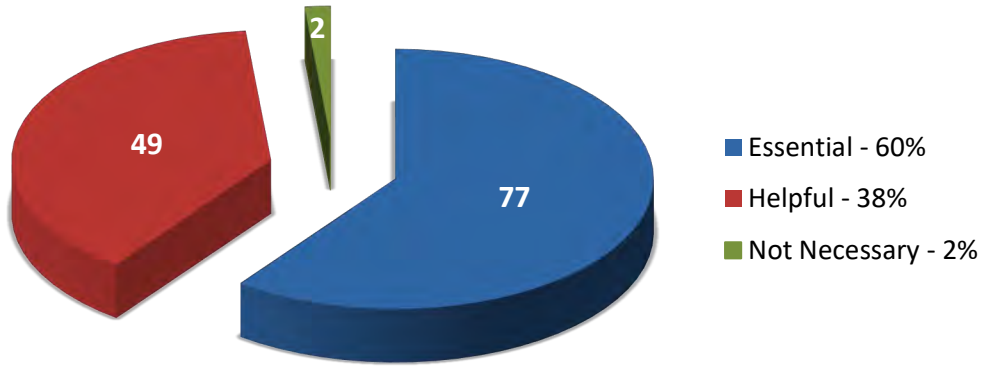


*lwes.net*  
*St Petersburg, FL*  
*727-202-8958*

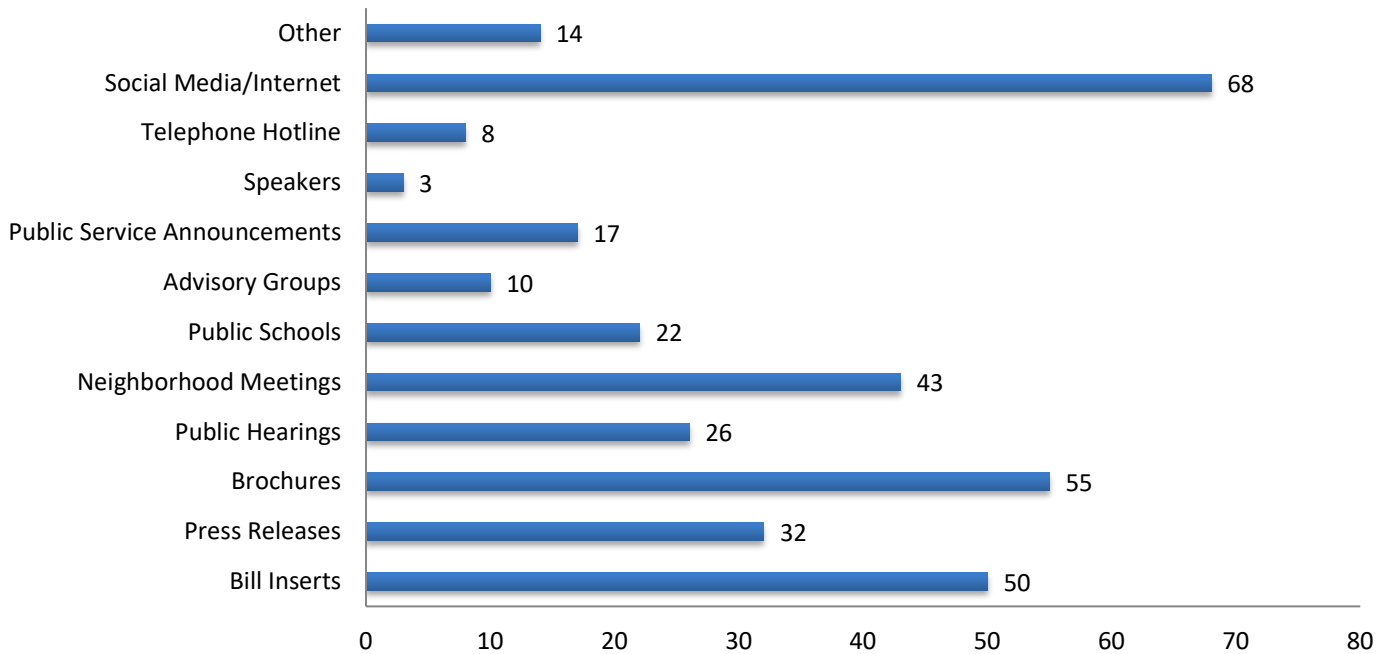


# Public Information Effort

**4-1** How important is an organized public information/education effort to the continuing success of a user fee funded SWU?



**4-2** What media have you found to be most effective in educating the public about utility services, program needs and financing, and citizen responsibilities?



# Appendix

## 2022 Survey Respondents

Shane Williams  
Stormwater Engineer

**Alachua County**

408 W University Avenue, Ste 106  
Gainesville, FL 32601  
352-264-6831

Bach McClure  
Stormwater Program Administrator

**Brevard County**

2725 Judge Fran Jamieson Way, A-219  
Viera, FL 32940  
321-633-2016

Steve Lawson  
Sanitation Superintendent

**City of Auburndale**

915 Charles Avenue  
Auburndale, FL 33823  
863-618-6207

Tom Woodard  
Public Works Director

**City of Bradenton Beach**

107 Gulf Drive N  
Bradenton Beach, FL 34217  
941-778-1005

Jeff Ratliff  
Capital Projects Director

**City of Cape Canaveral**

100 Polk Avenue  
Cape Canaveral, FL 32920  
321-868-1220

Kelly Brock  
Deputy Public Works Director/City Engineer

**City of Casselberry**

95 Triplet Lake Drive  
Casselberry, FL 32707  
407-262-7725

Jerrone McLaren  
Public Services Manager

**City of Clermont**

3335 Hancock Road  
Clermont, FL 34711  
352-241-0178

Natasha Lithway  
County Stormwater Engineer

**Bay County**

840 W 11th Street  
Panama City, FL 32401  
850-248-8301

David J. Bass  
Director of Public Works & Utilities

**City of Altamonte Springs**

950 Calabria Drive  
Altamonte Springs, FL 32714  
407-571-8337

Joseph Kroll  
Public Works & Transportation Director

**City of Aventura**

19200 W Country Club Drive  
Aventura, FL 33180  
305-466-8970

Lisa Koepke  
Assistant Planner

**City of Callaway**

6601 E Hwy 22  
Panama City, FL 32404  
850-871-1033

Persides Zambrano  
Public Works Planning Manager

**City of Cape Coral**

1015 Cultural Park Blvd  
Cape Coral, FL 33991  
239-574-0733

Roger Johnson  
Engineering Manager

**City of Clearwater**

100 S Myrtle Avenue, Ste 220  
Clearwater, FL 33756  
727-562-4750

Bryant Smith, III  
Director of Public Works

**City of Cocoa**

155 N Wilson Avenue  
Cocoa, FL 32922  
321-433-8770

## 2022 Survey Respondents

Jessica Bruso  
Stormwater Utility Manager  
**City of Cocoa Beach**  
1600 Minutemen Causeway  
Cocoa Beach, FL 32931  
321-868-3292

Michael Bailey  
Utilities Director/City Engineer  
**City of Cooper City**  
11791 SW 49th Street  
Cooper City, FL 33330  
954-434-5519

Justin Barton  
Engineer II, Utilities Division  
**City of Daytona Beach**  
125 Basin Street, Ste 100  
Daytona Beach, FL 32114  
386-671-8807

Priscilla Cygielnik  
Director Environmental Services  
**City of Deerfield Beach**  
200 Goolsby Blvd  
Deerfield Beach, FL 33441  
954-616-7046

Xinmin (Daisy) Zheng  
Stormwater Engineer  
**City of Delray Beach**  
100 NW 1st Avenue  
Delray Beach, FL 33444  
561-400-7324

Keith Fogarty  
Director of Public Services  
**City of Dunedin**  
1405 County Road 1  
Dunedin, FL 34698  
727-298-3232

Rick Gierok  
Public Works Director  
**City of Eustis**  
400 Morin Street  
Eustis, FL 32726  
352-483-5480

Randall Blanchette  
Engineering Manager  
**City of Coconut Creek**  
5295 Johnson Road  
Coconut Creek, FL 33073  
954-973-6786

Jorge Acevedo  
Utilities & ROW Division Chief  
**City of Coral Gables**  
2800 SW 72nd Avenue  
Miami, FL 33155  
305-460-5000

Alan Williamson  
Public Works Director  
**City of DeBary**  
16 Colomba Road  
DeBary, FL 32713  
386-601-0208

James Dillon  
Environmental Compliance Coordinator  
**City of DeLand**  
1102 S Garfield Avenue  
DeLand, FL 32724  
386-626-7184

Stephanie Bortz  
Stormwater Utility Manager  
**City of Doral**  
8401 NW 53 Terrace  
Doral, FL 33166  
305-593-6740

Randy Coslow  
Director of Environmental Services/City Engineer  
**City of Edgewater**  
PO Box 100  
Edgewater, FL 32132  
386-424-2400

Andre Desilet  
Utilities Director  
**City of Fernandina Beach**  
1180 S 5th Street  
Fernandina Beach, FL 32034  
904-310-3431

## 2022 Survey Respondents

Sandra Marie Pierce  
Stormwater Operations Manager  
**City of Fort Lauderdale**  
101 NE 3rd Avenue  
Fort Lauderdale, FL 33315  
954-828-7847

Richard Thompson  
Stormwater Resource Manager  
**City of Fort Myers**  
2200 Second Street  
Fort Myers, FL 33902  
239-321-7630

Nathan Gunn  
Stormwater and Streets Supervisor  
**City of Fort Walton Beach**  
107 Miracle Strip SW  
Fort Walton Beach, FL 32548  
850-833-9613

Alice Rankeillor  
Stormwater Services Supervisor  
**City of Gainesville**  
PO Box 490, Station 58  
Gainesville, FL 32609  
352-393-8408

Takoda Ruble  
Natural Resources Supervisor  
**City of Gulf Breeze**  
1070 Shoreline Drive  
Gulf Breeze, FL 32561  
850-781-6451

Yamil Alquizar  
Roadway & Stormwater Engineering Manager  
**City of Hialeah**  
900 E 56th Street, Bldg 4  
Hialeah, FL 33013  
305-687-2615

Todd Scaldo  
Director of Public Works  
**City of Indian Harbour Beach**  
2055 S Patrick Drive  
Indian Harbour Beach, FL 32937  
321-773-3181

Mike Cagle  
Public Works Supervisor  
**City of Fort Meade**  
521 NW 4th Street  
Fort Meade, FL 33841  
863-226-8504

Alicia Forbis  
GIS Specialist/SMU Assistant  
**City of Fort Pierce**  
100 N US 1  
Fort Pierce, FL 34950  
772-467-3777

Rob Dicus  
Public Works Director  
**City of Fruitland Park**  
506 Berckman Street  
Fruitland Park, FL 34731  
352-360-6795

Steve Thomas  
Assistant Public Works Director  
**City of Green Cove Springs**  
321 Walnut Street  
Green Cove Springs, FL 32043  
904-297-7058

Kendrix Anderson  
Public Works Superintendent  
**City of Gulfport**  
2401 53rd Street S  
Gulfport, FL 33707  
727-893-1083

Eduardo Gonzalez  
Asst Director, Public Works & Engineering Dept  
**City of Homestead**  
551 SE 8th Street  
Homestead, FL 33030  
305-224-4786

William Joyce  
Operations Director, Public Works Department  
**City of Jacksonville**  
214 N Hogan Street, 10th Floor  
Jacksonville, FL 32202  
904-255-8763

## 2022 Survey Respondents

Gerard Roussin  
Building Official  
**City of Key Colony Beach**  
600 W Ocean Drive  
Key Colony Beach, FL 33051  
305-434-0804

Nagel Altrui  
Stormwater Engineer  
**City of Kissimmee**  
101 Church Street, Ste 301  
Kissimmee, FL 34741  
407-518-2536

Danielle Koury  
City Engineer  
**City of Lake Mary**  
911 Wallace Court  
Lake Mary, FL 32746  
407-585-1453

Laurie Smith  
Lakes & Stormwater Manager  
**City of Lakeland**  
407 Fairway Avenue  
Lakeland, FL 33801  
863-834-6276

Eric Nagowski  
Public Works Engineer  
**City of Longwood**  
907 E State Road  
Longwood, FL 32750  
407-263-2382

Carlos A. Solis  
Director of Public Works & Engineering  
**City of Marathon**  
9805 Overseas Hwy  
Marathon, FL 33050  
305-289-5008

Larry Walker  
Public Services Director  
**City of Mascotte**  
100 E Myers Blvd  
Mascotte, FL 34753  
352-429-4429

John Paul Castro  
Utilities Director  
**City of Key West**  
1300 White Street  
Key West, FL 33040  
305-809-3902

Michael Davis  
Public Works Superintendent  
**City of Lake Alfred**  
155 E Pomelo Street  
Lake Alfred, FL 33850  
863-595-5310

Judith Love  
Water Sewer Storm Administrator  
**City of Lake Worth Beach**  
1900 2nd Avenue N  
Lake Worth Beach, FL 33460  
561-586-1719

Christopher Benigni  
Stormwater Program Administrator  
**City of Largo**  
201 Highland Avenue  
Largo, FL 33779  
727-587-6713

Megan Wepfer  
Director Public Works  
**City of Madeira Beach**  
300 Municipal Drive  
Madeira Beach, FL 33708  
727-543-8154

Giovanni Batista  
Assistant Public Works Director  
**City of Margate**  
102 N Rock Island Road  
Margate, FL 33063  
954-972-8126

J. Danielle Straub  
Engineering Project Manager  
**City of Melbourne**  
900 E Strawbridge Avenue  
Melbourne, FL 32901  
321-608-7300

## 2022 Survey Respondents

Juvenal Santana  
Director, Public Works  
**City of Miami**  
444 SW 2 Avenue, 8th Floor RPW  
Miami, FL 33130  
305-416-1218

Lazaro Garaboa  
Public Works Director  
**City of Miami Springs**  
345 N Poinciana Blvd  
Miami Springs, FL 33166  
305-805-5170

John Wright  
Utilities & Public Works Director  
**City of Mulberry**  
500 SW 2nd Street  
Mulberry, FL 33860  
863-425-5492

Samantha Hamilton  
GIS Technician  
**City of New Port Richey**  
6132 Pine Hill Road  
New Port Richey, FL 34668  
727-841-4536

Ammy Hanson  
CFM, Grants Manager  
**City of Niceville**  
208 N Partin Drive  
Niceville, FL 32578  
850-279-6436

Thomas Positano  
Assistant Public Works Director  
**City of North Miami**  
1855 NE 142nd Street  
North Miami, FL 33181  
305-895-9871

Sean Lanier  
City Engineer  
**City of Ocala**  
1805 NE 30th Avenue, Bldg 600  
Ocala, FL 34470  
352-351-6772

Tom Ruiz  
Public Works Director  
**City of Miami Gardens**  
18605 NW 27 Avenue  
Miami Gardens, FL 33169  
786-279-1260

Robert Holland  
Superintendent of Public Works  
**City of Minneola**  
PO Box 678  
Minneola, FL 34755  
352-536-4162

Andy Holland  
Acting Director  
**City of Naples**  
295 Riverside Circle  
Naples, FL 34102  
239-213-5001

Kyle Fegley  
City Engineer  
**City of New Smyrna Beach**  
210 Sams Avenue  
New Smyrna Beach, FL 32168  
386-410-2811

Jeremiah Kohnert  
Public Works Superintendent  
**City of North Lauderdale**  
701 SW 71 Avenue  
North Lauderdale, FL 33068  
954-724-7070

Christopher Cappiello  
Public Works Manager  
**City of Oakland Park**  
5100 NE 12th Terrace  
Oakland Park, FL 33334  
954-630-4432

Richard Campanale  
City Engineer/Asst Public Works Director  
**City of Ocoee**  
301 Maguire Road  
Ocoee, FL 34761  
407-905-3170



## 2022 Survey Respondents

Nan Bennett  
Special Projects Manager  
**City of Oldsmar**  
100 State Street W  
Oldsmar, FL 34677  
813-749-1262

Athena Tipaldos  
Assistant Stormwater Division Manager  
**City of Orlando**  
1010 Woods Avenue  
Orlando, FL 32805  
407-246-2754

Nadeca McLaughlin  
Public Works Accountant  
**City of Palm Bay**  
1050 Malabar Road SE  
Palm Bay, FL 32907  
321-409-7140

George Maiberger  
Purchasing Manager  
**City of Pensacola**  
222 W Main Street, 6th Floor  
Pensacola, FL 32502  
850-435-1837

Michael Taylor  
Stormwater Manager  
**City of Pompano Beach**  
1201 NE 3rd Avenue  
Pompano Beach, FL 33060  
954-786-4724

John Dunton  
Deputy Director  
**City of Port St. Lucie**  
450 SW Thornhill Drive  
Port St. Lucie, FL 34952  
772-344-4035

Michael Jaarusiewicz  
Public Works Administrative Coordinator  
**City of Rockledge**  
1400 Garden Road  
Rockledge, FL 32955  
321-221-7540

Leicester Dudley  
Stormwater Compliance Manager  
**City of Orange City**  
1100 S Thorpe Avenue  
Orange City, FL 32763  
386-775-5477

Shawn Finley  
Public Works Director  
**City of Ormond Beach**  
22 S Beach Street, Room 104  
Ormond Beach, FL 32174  
386-676-3292

Don Schrager  
Stormwater Operations Manager  
**City of Palm Coast**  
22 Utility Drive  
Palm Coast, FL 32137  
386-986-4789

Aaron Petersen  
Construction Services Director  
**City of Pinellas Park**  
6250 82nd Avenue N  
Pinellas Park, FL 33781  
727-369-5728

Sal Licari  
Operations Manager  
**City of Port Richey**  
6333 Ridge Road  
Port Richey, FL 34668  
727-816-1907

Sedrick Clarke  
Public Works Operations Manager  
**City of Riviera Beach**  
1481 W 15th Street  
Riviera Beach, FL 33404  
561-840-3119

Renee Cooper  
Public Works Director  
**City of Safety Harbor**  
1200 Railroad Avenue  
Safety Harbor, FL 34695  
727-724-1550

## 2022 Survey Respondents

Allen Potter  
Public Works Director  
**City of Satellite Beach**  
640 Jackson Avenue  
Satellite Beach, FL 32937  
321-777-2309

Jessica Beach  
Chief Resilience Officer  
**City of St. Augustine**  
PO Box 210  
St. Augustine, FL 32085  
904-209-4227

Brejesh Prayman  
Director, Engineering & Capital Improvements  
**City of St. Petersburg**  
1 Fourth Street N  
St. Petersburg, FL 33701  
727-893-7295

Richard Labinsky  
City Engineer  
**City of Sunny Isles Beach**  
18070 Collins Avenue, 3rd Floor  
Sunny Isles Beach, FL 33160  
305-968-4168

Jason Smith  
Manager Stormwater Planning  
**City of Tallahassee**  
300 S Adams Street, B-35  
Tallahassee, FL 32301  
850-891-6860

Alexander Awad  
Chief Planning Engineer  
**City of Tampa**  
306 E Jackson Street 6N  
Tampa, FL 33602  
813-274-7865

Phillip Clark  
Utilities Director  
**City of Tavares**  
1000 Captain Haynes Road  
Tavares, FL 32778  
352-742-6368

Shawn Shimko  
Public Works Director  
**City of South Pasadena**  
7047 Sunset Drive S  
South Pasadena, FL 33707  
727-580-0472

Brett Warner  
Assistant Public Works Director  
**City of St. Pete Beach**  
155 Corey Avenue  
St. Pete Beach, FL 33706  
727-363-9254

William Griffin  
Stormwater Specialist/Team Leader I  
**City of Stuart**  
121 SW Flagler Avenue  
Stuart, FL 34994  
772-600-1264

Eric Gomez  
City Engineer  
**City of Sweetwater**  
1701 NW 112th Avenue, Ste 103  
Sweetwater, FL 33172  
305-455-6585

John Doherty  
Acting Public Services Director  
**City of Tamarac**  
6011 Nob Hill Road  
Tamarac, FL 33321  
954-597-3706

Anthony Mannello  
Streets and Stormwater Supervisor  
**City of Tarpon Springs**  
324 E Pine Street  
Tarpon Springs, FL 34689  
727-942-5606

Sandra Reller  
Public Works Deputy Director  
**City of Titusville**  
555 S Washington Avenue  
Titusville, FL 32796  
321-567-3846

## 2022 Survey Respondents

Aaron Mercer  
Director of Development & Public Services  
**City of Umatilla**  
1 Central Avenue S  
Umatilla, FL 32784  
352-669-7539

Juan Pena  
Director of Public Works  
**City of West Miami**  
901 SW 62 Avenue  
West Miami, FL 33144  
305-266-4214

David Archacki  
EM/Utilities Director  
**City of Wilton Manors**  
2020 Wilton Drive  
Wilton Manors, FL 33305  
954-390-2190

Michael John Carnevale  
Public Works Director  
**City of Winter Haven**  
451 Third Street NW  
Winter Haven, FL 33881  
863-291-5600

Jie Gao  
Manager, Stormwater Engineering Services  
**Hillsborough County**  
601 E Kennedy Blvd  
Tampa, FL 33602  
813-460-6539

Jocelyn Nageon de Lestang  
Assistant County Engineer, Stormwater  
**Marion County**  
412 SE 25th Avenue  
Ocala, FL 34472  
352-671-8686

Sandra Choquette  
Administration Division Manager  
**Pasco County**  
4454 Grand Blvd  
New Port Richey, FL 34652  
727-834-3611

Mark Piccirillo  
Public Works Director  
**City of West Melbourne**  
1415 Henry Avenue  
West Melbourne, FL 32904  
321-727-3710

Stephon Harris  
Utilities O&M Superintendent  
**City of West Palm Beach**  
1045 Charlotte Avenue, Bldg 5  
West Palm Beach, FL 33401  
561-822-2168

Jim Monahan  
City Engineer  
**City of Winter Garden**  
300 W Plant Street  
Winter Garden, FL 34787  
407-877-5463

Shannon Monahan  
Engineer I  
**City of Winter Park**  
401 S Park Avenue  
Winter Park, FL 32789  
407-280-5535

Anna Padilla  
Stormwater Management Coordinator  
**Leon County**  
2280 Miccosukee Road  
Tallahassee, FL 32308  
850-606-1539

Randall White  
Stormwater Utility Section Manager  
**Miami-Dade County**  
701 NW 1st Court, Ste 500  
Miami, FL 33136  
305-372-6406

Melanie Weed  
Environmental Management Division Director  
**Pinellas County**  
22111 US Hwy 19, Bldg 10  
Clearwater, FL 33765  
727-464-4187

## 2022 Survey Respondents

Gregg Knothe  
Water Resources Coordinator  
**Polk County**  
4177 Ben Durrance Road  
Bartow, FL 33830  
863-534-7377

Keith Bodeker  
Director of Public Works  
**Town of Belleair**  
901 Ponce de Leon Blvd  
Belleair, FL 33756  
727 408-4860

David Rotar  
Utility Services Manager  
**Town of Jupiter**  
210 Military Trail  
Jupiter, FL 33458  
561-748-2701

Matt Stinnett  
Town Manager  
**Town of Malabar**  
2725 Malabar Road  
Malabar, FL 32950  
321-727-7764

Robert Clark  
Public Services Director  
**Town of Pembroke Park**  
3150 SW 52nd Avenue  
Pembroke Park, FL 33023  
954-966-4600

Hector Gomez  
Public Works Director  
**Town of Surfside**  
9293 Harding Avenue  
Surfside, FL 33154  
786-778-1728

Katarzyna Kulpa  
Resilience Coordinator  
**Village of Key Biscayne**  
88 W McIntyre Street, Ste 250  
Key Biscayne, FL 33149  
305-365-7581

Amanda Boone  
Stormwater Senior Manager  
**Sarasota County**  
1001 Sarasota Center Blvd  
Sarasota, FL 34240  
941-861-0891

Yenier Vega  
Stormwater Utility Manager  
**Town of Cutler Bay**  
10720 Caribbean Blvd, Ste 105  
Cutler Bay, FL 33189  
786-218-7831

Jerry Darr  
Assistant Utilities Manager  
**Town of Lantana**  
500 Greynolds Circle  
Lantana, FL 33462  
561-718-2156

Tom Davis  
Public Works Director  
**Town of Melbourne Beach**  
507 Ocean Avenue  
Melbourne Beach, FL 32951  
321-724-5860

Bill Krajewski  
Commissioner  
**Town of Redington Shores**  
17425 Gulf Blvd  
Redington Shores, FL 33708  
727-423-0494

Roseann Prado  
Village Clerk  
**Village of Indian Creek**  
9080 Bay Drive  
Indian Creek Village, FL 33154  
305-865-4121

Angela Thul  
Stormwater Coordinator  
**Village of Palm Springs**  
226 Cypress Lane  
Palm Springs, FL 33461  
561-434-5122

## 2022 Survey Respondents

Christine Wadleigh  
Budget & Reporting Director  
**Village of Wellington**  
12300 W Forest Hill Blvd  
Wellington, FL 33414  
561-791-4111

Robert Falk  
Civil Engineer II  
**Volusia County**  
3771 W International Speedway Blvd  
Daytona Beach, FL 32124  
386-717-2219



## FSA 2022 Stormwater Utility Report

# More About the Florida Stormwater Association

## Membership

Membership in FSA is organizational: All employees of a member local government, consulting firm or other organization are members of FSA! There are seven categories of organizations that may become members of FSA:

- ✓ Local Governments (cities and counties)
- ✓ Consultants (consulting and engineering firms)
- ✓ Associate (product manufacturers and vendors)
- ✓ Special Districts
- ✓ Academic Departments
- ✓ Law Firms
- ✓ Water Management Districts

For more information about membership, services and dues rates, please visit [www.florida-stormwater.org/join](http://www.florida-stormwater.org/join) or call FSA at (888) 221-3124.

## Publications

### 2022 Survey of Stormwater Utilities

The [Stormwater Utilities Survey Report](#) summarizes the results of the biennial survey of stormwater utilities in Florida conducted by FSA. Its purpose is to provide information to both managers and policymakers in state and local government. Trends in the characteristics of the stormwater programs, utility rates and other practices within local government can be observed by comparing FSA's survey results. All FSA member organizations and contributors to the Survey receive a complimentary copy of the Report which is sent to the Primary Contact of the organization. New members receive their copy in their Welcome Packet. Additional copies can be [ordered online](#).

### Manual for Establishing Stormwater Utilities in Florida

FSA's Manual "[Establishing a Stormwater Utility in Florida](#)" was first published in 1998, and revised in 2003 and 2013. It was initially prepared to assist communities that were considering the development and implementation of a stormwater utility as a means of providing supplemental or alternative funding for their stormwater management program. The current edition is also helpful for those jurisdictions with existing utilities that are considering changes to rates or rate structures. Manuals can be [ordered online](#).